

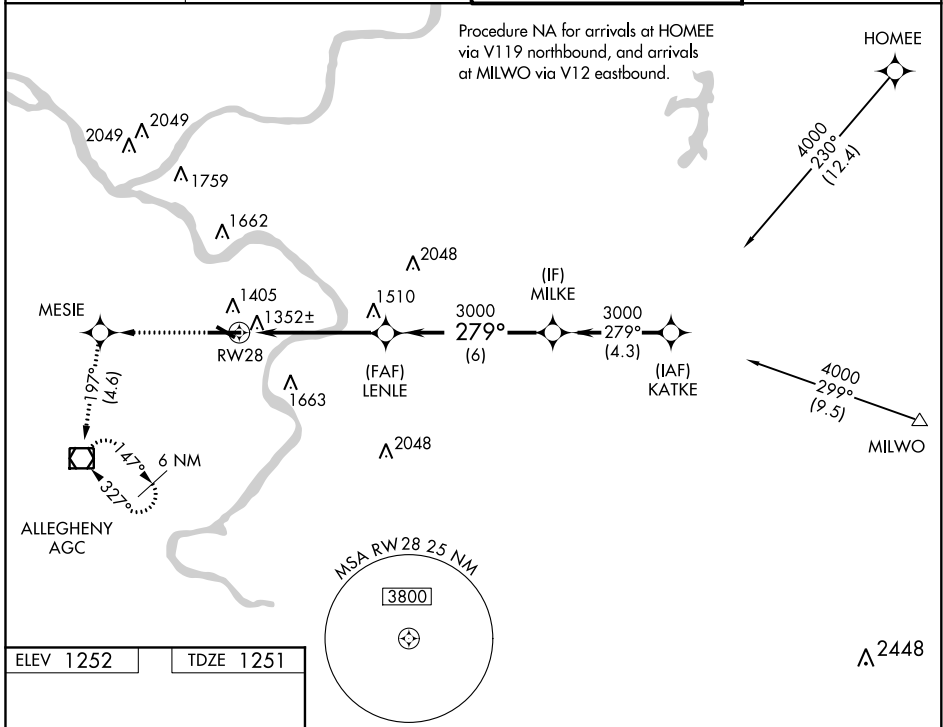
WAAS CH 65625 W28A	APP CRS 279°	Rwy ldg TDZE 1251 Apt Elev 1252	6501
--	------------------------	---	-------------

RNAV (GPS) RWY 28

ALLEGHENY COUNTY (AGC)

<p>▼ Baro-VNAV NA below -17°C (2°F). DME/DME RNP-0.3 NA. For inoperative MALSRS, increase LPV visibility to RVR 5000 all Cats.</p>	<p>MALSRS</p> 	<p>MISSED APPROACH: Climb to 3000 direct MESIE and via 197° track to AGC VOR/DME and hold.</p>
---	---	--

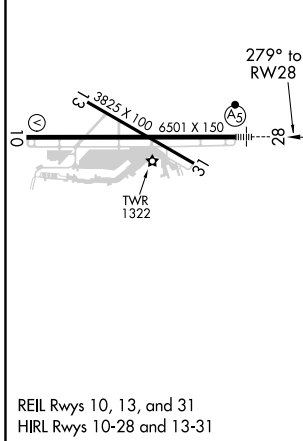
ATIS 120.55	PITTSBURGH APP CON 119.35 285.575	ALLEGHENY TOWER 121.1 239.0	GND CON 121.7
-----------------------	---	---------------------------------------	-------------------------



NE-4, 16 JUN 2022 to 14 JUL 2022

NE-4, 16 JUN 2022 to 14 JUL 2022

ELEV 1252	TDZE 1251
-----------	-----------



3000	MESIE	tr 197°	AGC	LENLE	MILKE	Procedure Turn NA
3000	*1.3 NM to RWY 28			3000	3000	GP 3.00° TCH 51
	*LNAV only.					
	-1.3	4 NM		6 NM		

CATEGORY	A	B	C	D
LPV DA	1563/24 312 (400-½)			
LNAV/VNAV DA	1625/40 374 (400-¾)			
LNAV MDA	1700/24 449 (500-½)	1700/40 449 (500-¾)	1700/50 449 (500-1)	
<input checked="" type="checkbox"/> CIRCLING	1720-1¼ 468 (500-1¼)	1980-2 728 (800-2)	1980-2¼ 728 (800-2¼)	