

SWABY NINE DEPARTURE (SWABY9.SWABY)


AL-314 [USN] PATUXENT RIVER, MARYLAND

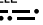
Knots	60	120	180	240	300	360
V/V(fpm)	310	620	930	1240	1550	1860

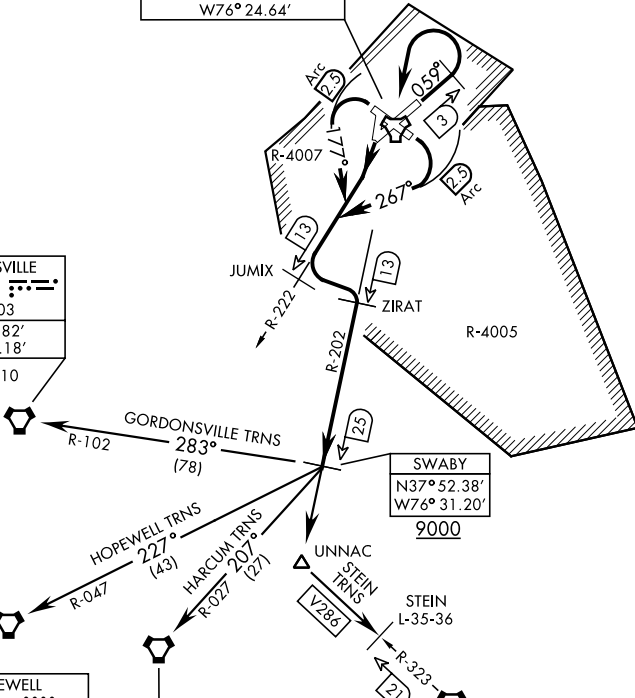
ATC Climb Rate to 9000


Departure Rwy 2-20 not authorized.
Minimum filing alt 10,000'.

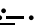
•285
 ATIS 322.425
 CLNC DEL
 135.2 316.125
 GND CON
 120.6 336.4
 PATUXENT TOWER
 123.7 343.65
 PATUXENT APP/DEP CON
 121.0 250.3

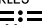
NAS PATUXENT RIVER
 Chan 39 (Y) NHK 
 N38°16.86'
 W76°24.64'

GORDONSVILLE
 115.6 GVE 
 Chan 103
 N38°00.82'
 W78°09.18'
 L-36, H-10



HOPEWELL
 112.0 HPW 
 Chan 57
 N37°19.73'
 W77°06.96'
 L-34-36, H-10-12

HARCUM
 108.8 HCM 
 Chan 25
 N37°26.92'
 W76°42.68'
 L-34-36, H-10-12

CAPE CHARLES
 112.2 CCV 
 Chan 59
 N37°20.85'
 W75°59.86'
 L-34-36, H-10-12

ATC BRIEF
REQUIRED

135.2 316.125

TACAN REQUIRED

Note: Chart not to scale
(Continued on next page)

NE-3, 16 JUN 2022 to 14 JUL 2022

NE-3, 16 JUN 2022 to 14 JUL 2022