

SALISBURY SEVEN DEPARTURE (SBY7.CBEAV)

PATUXENT RIVER, MARYLAND

AL-314 [USN]

Rwy	Knots	60	120	180	240	300	360
24	V/V(fpm)	214	428	642	856	1070	1284

Minimum Climb Rate to 500

ATIS 322.425
 CLNC DEL
 135.2 316.125
 GND CON
 120.6 336.4
 PATUXENT TOWER
 123.7 343.65
 PATUXENT APP/DEP CON
 121.0 250.3

WATERLOO
 112.6 ATR
 Chan 73
 N38°48.59'
 W75°12.68'

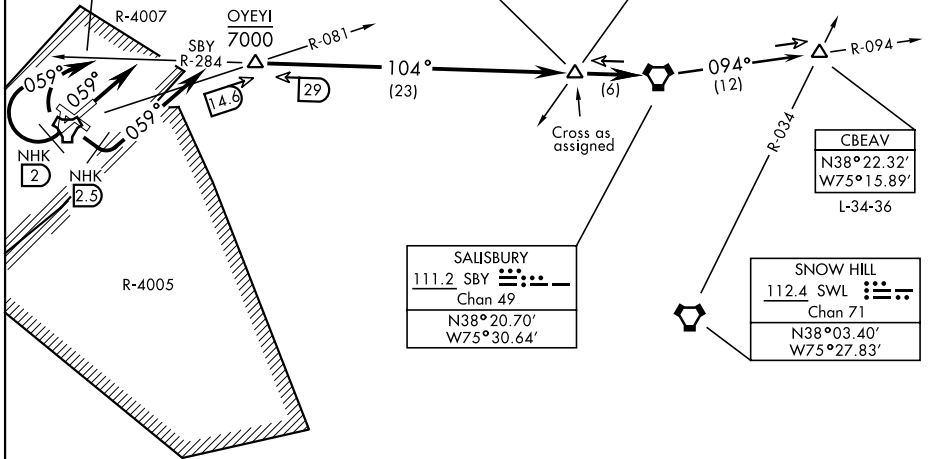
NAS PATUXENT RIVER
 Chan 39 (Y) NHK
 N38°16.86'
 W76°24.64'

FRAND
 N38°20.90'
 W75°38.18'

CBEAV
 N38°22.32'
 W75°15.89'
 L-34-36

SALISBURY
 111.2 SBY
 Chan 49
 N38°20.70'
 W75°30.64'

SNOW HILL
 112.4 SWL
 Chan 71
 N38°03.40'
 W75°27.83'



NE-3, 16 JUN 2022 to 14 JUL 2022

NE-3, 16 JUN 2022 to 14 JUL 2022

Departure Rwy 2-20 not authorized.

DEPARTURE ROUTE DESCRIPTION

TAKEOFF RWY 6: Climb to 6000 heading 059°, thence...

TAKEOFF RWY 14: Climbing left turn to 6000 heading 059° within NHK TACAN 2.5 DME, thence...

TAKEOFF RWY 24: Climb on heading 239° to NHK TACAN 2 DME, then climbing right turn to 6000 heading 059°, thence...

TAKEOFF RWY 32: Climbing right turn to 6000 to heading 080°, thence...

Intercept SBY VORTAC R-284, then on SBY R-284 to SBY. Cross FRAND as assigned. Then on assigned route or transition..

CBEAV TRANSITION (SBY7.CBEAV): Then on SBY R-094 to CBEAV.

SALISBURY SEVEN DEPARTURE (SBY7.CBEAV)

PATUXENT RIVER, MARYLAND