

PATUXENT RIVER, MARYLAND

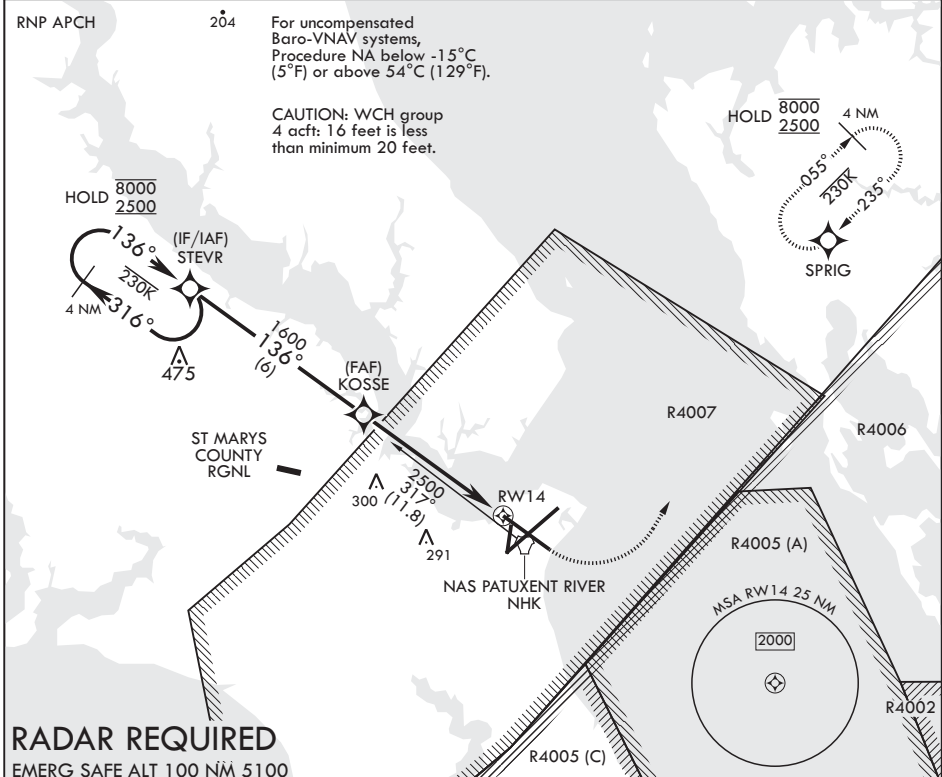
RNAV (GPS) RWY 14

APCH CRS 136°	Rwy Idg 9732
	TDZE 27
	Arprt Elev 39

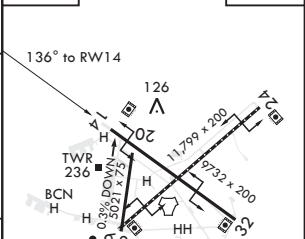
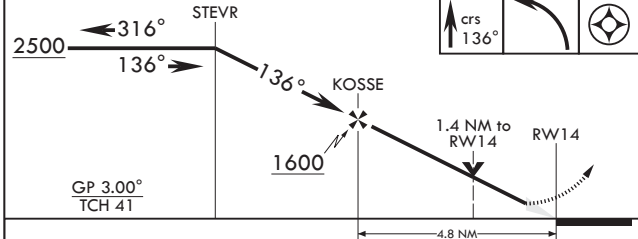
AL-314 (USN) PATUXENT RIVER NAS (TRAPNELL FLD) (KNHK)

▽ MISSED APPROACH: Climb to 600, then climbing left turn to 2500 direct SPRIG and hold.

ATIS 322.425	APP CON/DEP CON 121.0 250.3	TOWER 123.7 343.65	GND CON 120.6 336.4	CLNC DEL 135.2 316.125	ASR/PAR
------------------------	---------------------------------------	------------------------------	-------------------------------	----------------------------------	---------



2500	STEVN	136°	136°	KOSSE	1600	1.4 NM to RWY 14	RWY 14	600	2500	SPRIG	ELEV 39	TDZE 27
------	-------	------	------	-------	------	------------------	--------	-----	------	-------	---------	---------



CATEGORY	A	B	C	D	
LNAV/VNAV DA	374-1 347 (400-1)	385-1 358 (400-1)	393-1 366 (400-1)	404-1 377 (400-1)	
LNAV MDA	500-1 473 (500-1)	500-1 473 (500-1)	500-1½ 473 (500-1½)	500-1½ 473 (500-1½)	
C CIRCLING	560-1 521 (600-1)	600-1 561 (600-1)	620-1½ 581 (600-1½)	680-2 641 (700-2)	TDZL/CL Rwy 6 HIRL Rwy 6-24, 14-32

PATUXENT RIVER, MARYLAND 38°17'N - 76°25'W PATUXENT RIVER NAS (TRAPNELL FLD) (KNHK)

Amdt 2 02DEC21

RNAV (GPS) RWY 14

NE-3, 16 JUN 2022 to 14 JUL 2022

NE-3, 16 JUN 2022 to 14 JUL 2022