

PATUXENT RIVER, MARYLAND

ILS or LOC/DME RWY 6

LOC/DME I-NHK 108.7 Chan 24	APCH CRS 059°	Rwy ldg 11,799 TDZE 39 Arprt Elev 39
---	-------------------------	---

AL-314 [USN] PATUXENT RIVER NAS (TRAPNELL FIELD) (KNHK)

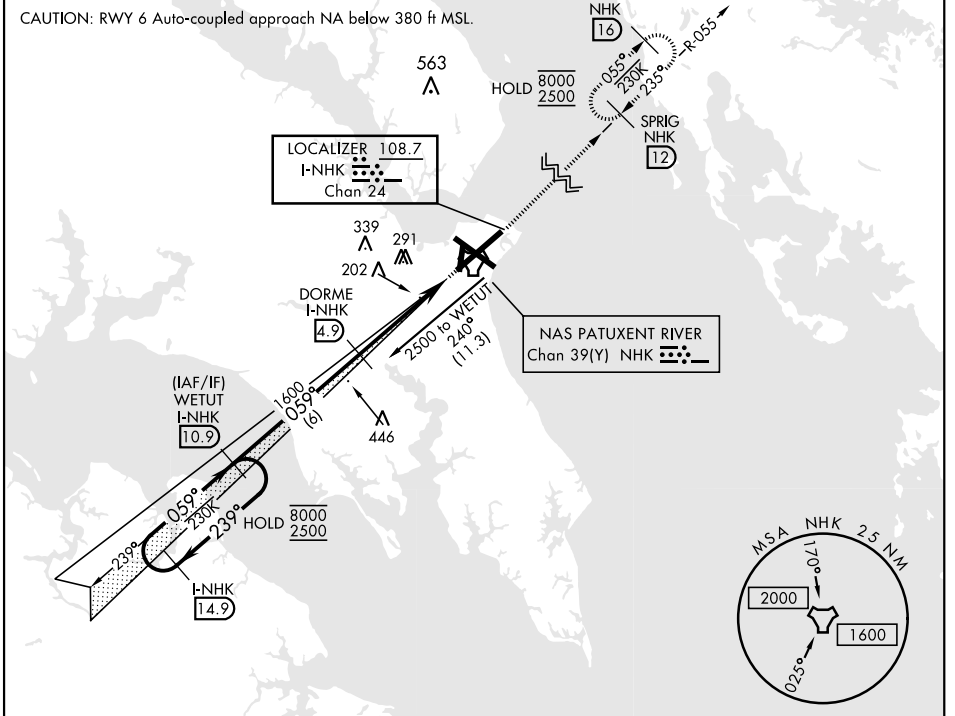
▽ * When ALS inop, increase vis to 3/4 mile.
** When ALS inop, increase CAT AB vis to 1 mile;
CAT CD vis to 1 1/2 miles.



MISSED APPROACH: Climb to 2500 heading 059° and intercept NHK TACAN R-055 to SPRIG and hold.

ATIS 322.425	APP/DEP CON 121.0 250.3	TOWER 123.7 343.65	GND CON 120.6 336.4	CLNC DEL 135.2 316.125	ASR/PAR
------------------------	-----------------------------------	------------------------------	-------------------------------	----------------------------------	---------

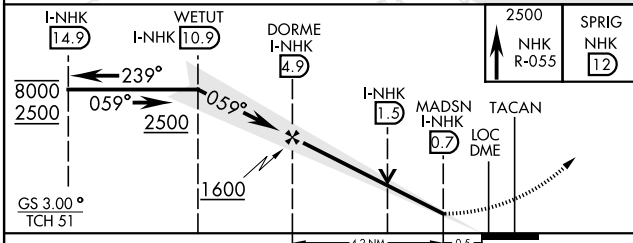
CAUTION: RWY 6 Auto-coupled approach NA below 380 ft MSL.



NE-3, 16 JUN 2022 to 14 JUL 2022

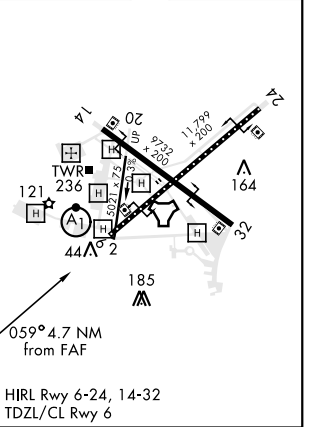
NE-3, 16 JUN 2022 to 14 JUL 2022

EMERG SAFE ALT 100 NM 5100



ELEV 39	TDZE 39
---------	---------

CATEGORY	A	B	C	D
S-ILS 6 *	239-1/2 200 (200-1/2)			
S-LOC 6 **	500-1/2 461 (500-1/2)	500-1 461 (500-1)		
CIRCLING	560-1 521 (600-1)	600-1 561 (600-1)	620-1 1/2 581 (600-1 1/2)	680-2 641 (700-2)



PATUXENT RIVER, MARYLAND 38° 17'N-76° 25'W PATUXENT RIVER NAS (TRAPNELL FIELD) (KNHK)

Orig 02DEC21

ILS or LOC/DME RWY 6