

SHREK TWO ARRIVAL (RNAV)

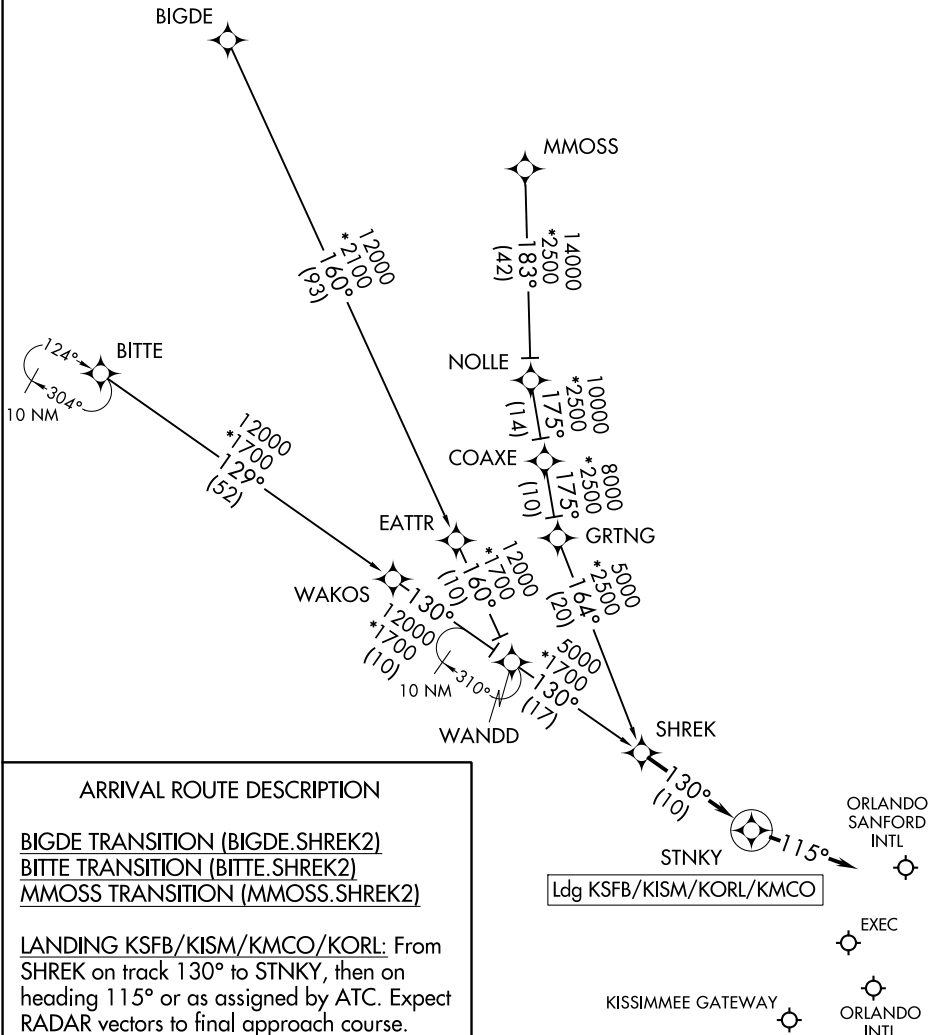
ORLANDO, FLORIDA

RNAV 1 - DME/DME/IRU or GPS.

RADAR required.

ORLANDO APP CON 134.05 339.8
 JACKSONVILLE APP CON 128.675 263.05
 ISM ATIS 128.775
 ORL ATIS 127.25
 SFB ATIS 125.975
 MCO D-ATIS ARR 121.25

NOTE: Jets landing ISM and ORL, ATC assigned only.
 NOTE: Turboprops and props only landing MCO.
 NOTE: Landing all airports, expect RADAR vectors after STINKY.



ARRIVAL ROUTE DESCRIPTION

- BIGDE TRANSITION (BIGDE.SHREK2)
- BITTE TRANSITION (BITTE.SHREK2)
- MMOSS TRANSITION (MMOSS.SHREK2)

LANDING KSFB/KISM/KMCO/KORL: From SHREK on track 130° to STNKY, then on heading 115° or as assigned by ATC. Expect RADAR vectors to final approach course.

NOTE: Chart not to scale.

SHREK TWO ARRIVAL (RNAV)

ORLANDO, FLORIDA

SE-3, 16 JUN 2022 to 14 JUL 2022

SE-3, 16 JUN 2022 to 14 JUL 2022