

WAAS CH 70729 W07A	APP CRS 073°	Rwy Idg TDZE 109 Apt Elev 113
--	------------------------	---

RNAV (GPS) RWY 7

EXEC (ORL)

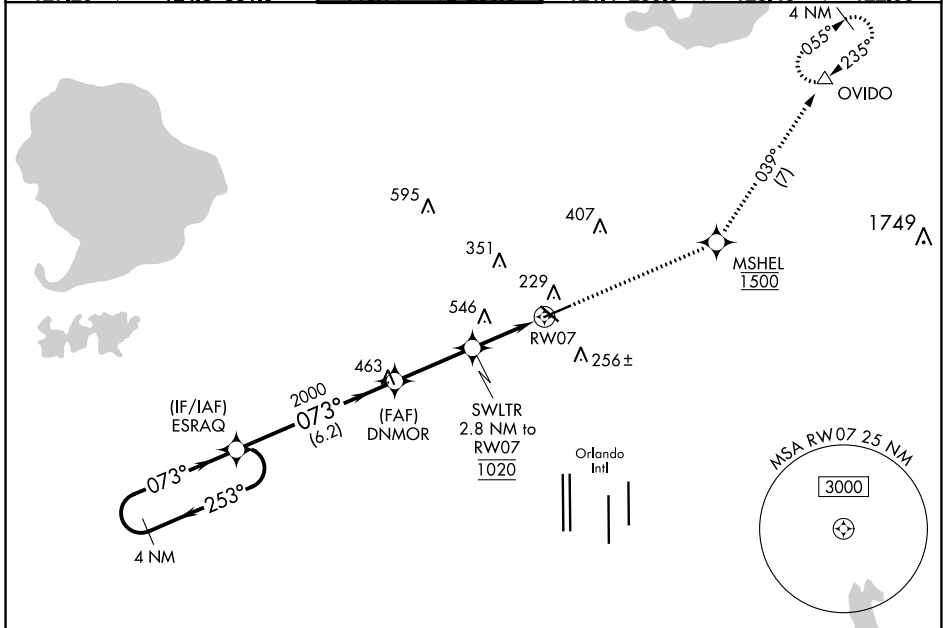
RNP APCH

For uncompensated Baro-VNAV systems, LNAV/VNAV NA below 2°C or above 54°C. Circling Rwy 31 NA at night. For inop ALS, increase LPV all Cats visibility to RVR 4500, increase LNAV/VNAV all Cats visibility to RVR 5000, increase LNAV Cat A/B visibility to RVR 5500 and Cats C/D to 1¼ SM. In minimum visibility conditions, bright lights on highway ½ mile south of airport may be mistaken for runway lights. Rwy 7 helicopter visibility reduction below ¾ SM NA.



MISSED APPROACH:
Climb to 1500 direct MSHEL, cross MSHEL at 1500, then climb to 1600 on track 039° to OVIDO and hold.

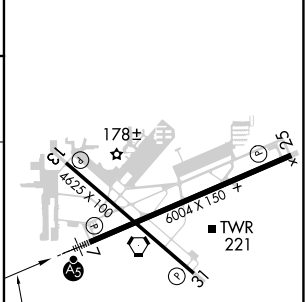
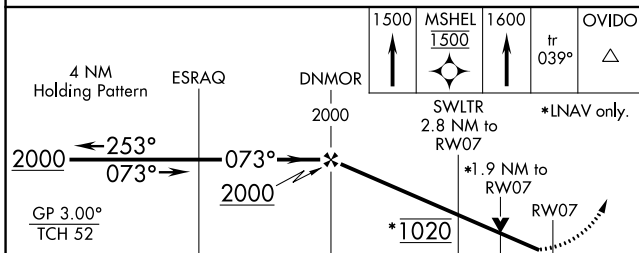
ATIS 127.25	ORLANDO APP CON 124.8 351.9	EXECUTIVE TOWER ★ 118.7 (CTAF) 0 239.0	GND CON 121.4 239.0	CLNC DEL 128.45	UNICOM 122.95
-----------------------	---------------------------------------	--	-------------------------------	---------------------------	-------------------------



SE-3, 16 JUN 2022 to 14 JUL 2022

SE-3, 16 JUN 2022 to 14 JUL 2022

ELEV 113	TDZE 109
----------	----------



CATEGORY	A	B	C	D
LPV DA		391/40	282 (300-¾)	
LNAV/VNAV DA		447/40	338 (400-¾)	
LNAV MDA	740/40	631 (700-¾)	740-1⅓	631 (700-1⅓)
CIRCLING	740-1	627 (700-1)	860-2¼ 747 (800-2¼)	860-2½ 747 (800-2½)

073° to RW07

REIL Rwy 13 and 31
HIRL Rwy 7-25 and 13-31