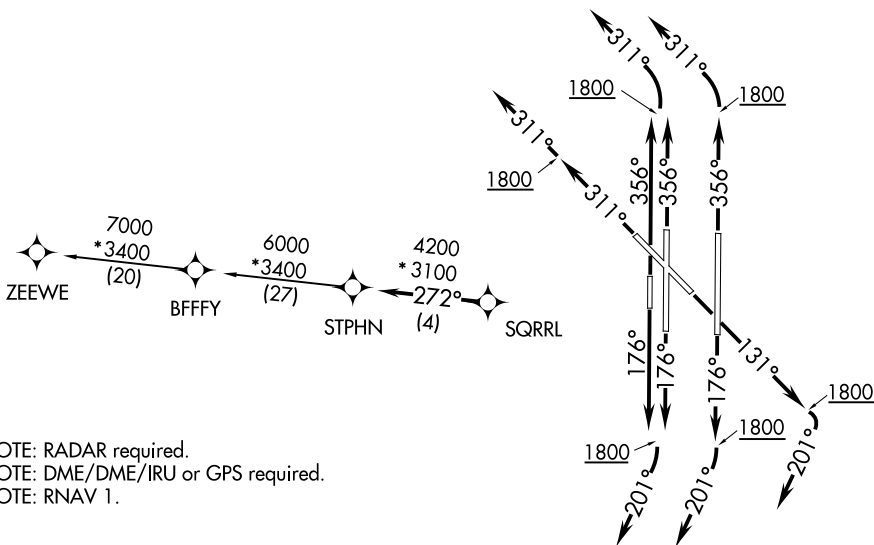


# STPHN THREE DEPARTURE (RNAV)

D-ATIS 125.85  
CLNC DEL  
124.35  
GND CON  
121.9 348.6  
ROGERS TOWER  
119.35 269.45  
OKE CITY DEP CON  
124.6 266.8

**TOP ALTITUDE:  
ASSIGNED BY ATC**

**TAKEOFF MINIMUMS:**  
Rwy 13, 17L/R, 18, 31, 35L/R, 36:  
Standard with minimum climb of 500'  
per NM to 1800.



NOTE: RADAR required.  
NOTE: DME/DME/IRU or GPS required.  
NOTE: RNAV 1.

NOTE: Chart not to scale.



## DEPARTURE ROUTE DESCRIPTION

**TAKEOFF RWY 13:** Climb heading 131° to 1800, then right turn heading 201° or as assigned by ATC, expect RADAR vectors to SQRRL, thence . . . .

**TAKEOFF RWY 17L/R, 18:** Climb heading 176° to 1800, then right turn heading 201° or as assigned by ATC, expect RADAR vectors to SQRRL, thence . . . .

**TAKEOFF RWY 31:** Climb heading 311° to 1800, then heading 311° or as assigned by ATC, expect RADAR vectors to SQRRL, thence . . . .

**TAKEOFF RWY 35L/R, 36:** Climb heading 356° to 1800, then left turn heading 311° or as assigned by ATC, expect RADAR vectors to SQRRL, thence . . . .

. . . . on track 272° to STPHN, then on (transition). Maintain 5000 or as assigned by ATC. Expect filed altitude 10 minutes after departure.

BFFFY TRANSITION (STPHN3.BFFFY):  
ZEEWE TRANSITION (STPHN3.ZEEWE):