

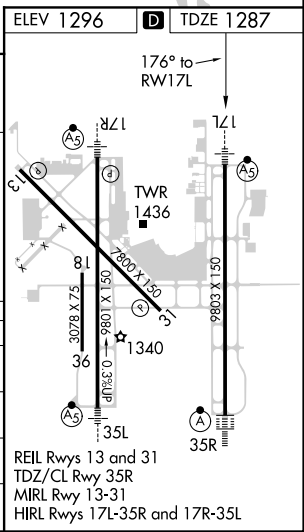
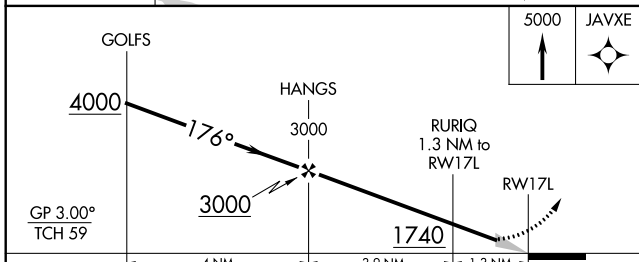
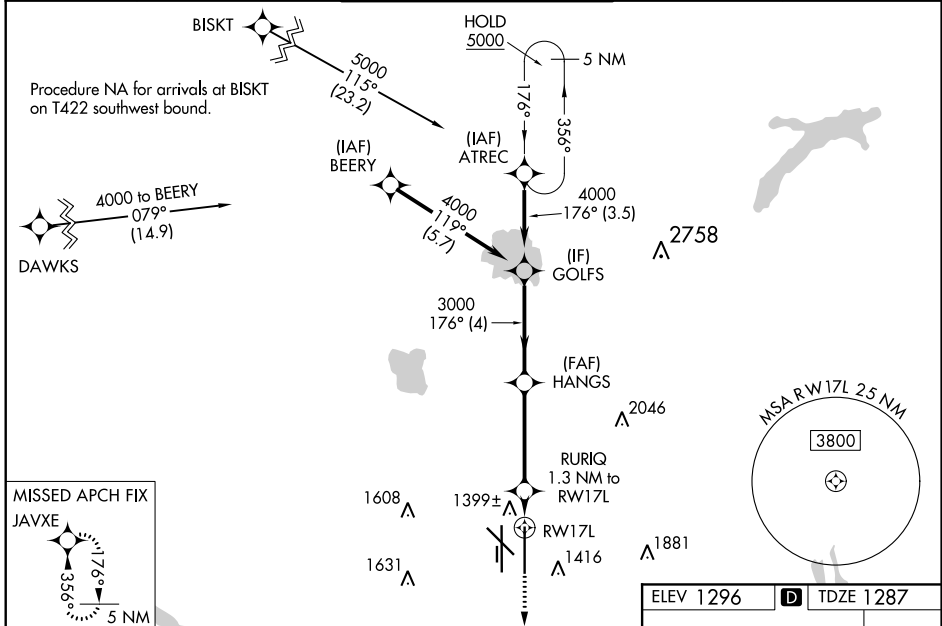
WAAS CH 56503 W17B	APP CRS 176°	Rwy Idg TDZE Apt Elev	9802 1287 1296
--	------------------------	-----------------------------	---

RNAV (GPS) Y RWY 17L

WILL ROGERS WORLD (OKC)

RNP APCH-GPS.	MALSR 	MISSED APPROACH: Climb to 5000 direct JAVXE and hold, continue climb-in-hold to 5000.
<p>Simultaneous approach authorized. LNAV procedure NA during simultaneous operations. Use of FD or AP required during simultaneous operations. For uncompensated Baro-VNAV systems, LNAV/VNAV NA below -12°C or above 54°C. For inop ALS, increase LPV Cat E visibility to RVR 4000, LNAV/VNAV Cat E visibility to RVR 4500, and LNAV all Cats visibility to RVR 5500. * RVR 1800 authorized with use of FD or AP or HUD to DA.</p>		

D-ATIS 125.85	OKE CITY APP CON 124.6 266.8	ROGERS TOWER 119.35 269.45	GND CON 121.9 348.6	CLNC DEL 124.35
-------------------------	--	--------------------------------------	-------------------------------	---------------------------



CATEGORY	A	B	C	D	E
LPV DA*	1487/24		200 (200-½)		
LNAV/VNAV DA	1590/24		303 (300-½)		
LNAV MDA	1660/24	373 (400-½)	1660/35		373 (400-¾)
CIRCLING	1740-1 444 (500-1)	1760-1 464 (500-1)	1960-1¾ 664 (700-1¾)	2000-2¼ 704 (800-2¼)	2240-3 944 (1000-3)

SC-1, 16 JUN 2022 to 14 JUL 2022

SC-1, 16 JUN 2022 to 14 JUL 2022