

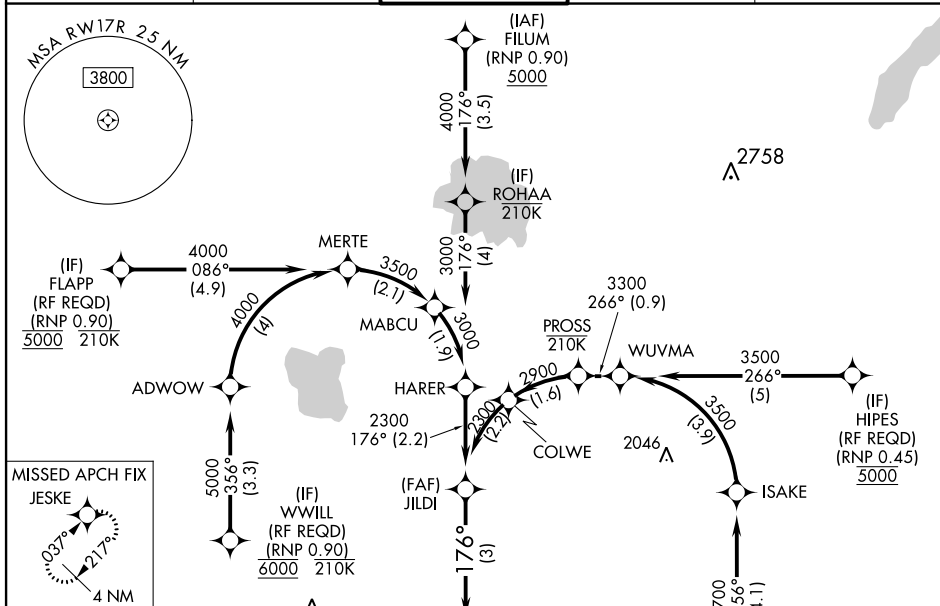
APP CRS	Rwy Idg	9800
176°	TDZE	1282
	Apt Elev	1296

RNAV (RNP) Z RWY 17R

WILL ROGERS WORLD (OKC)

RNP AR APCH.	MALSRR	MISSED APPROACH: Climb to 2000 then climbing right turn to 3000 direct JESKE and hold.
ASR		
For uncompensated Baro-VNAV systems, procedure NA below -13°C or above 54°C. For inop ALS, increase RNP 0.20 all Cats visibility to RVR 4500 and RNP 0.30 all Cats visibility to RVR 6000. Simultaneous approach authorized. Use of FD or AP required during simultaneous operations.		

D-ATIS	OKE CITY APP CON	ROGERS TOWER	GND CON	CLNC DEL
125.85	124.6 266.8	119.35 269.45	121.9 348.6	124.35

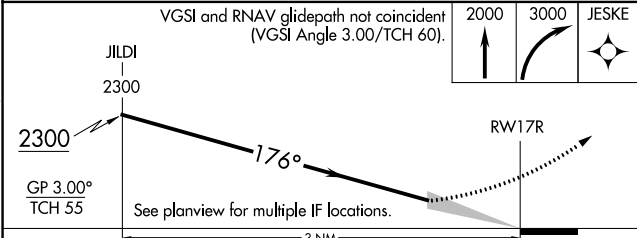
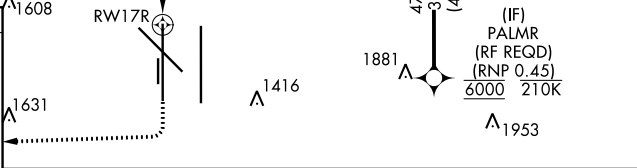


SC-1, 16 JUN 2022 to 14 JUL 2022

SC-1, 16 JUN 2022 to 14 JUL 2022

ELEV 1296 TDZE 1282

REIL Rws 13 and 31
TDZ/CL Rwy 35R
MIRL Rwy 13-31
HIRL Rws 17L-35R and 17R-35L



CATEGORY	A	B	C	D
RNP 0.20 DA		1559/24	277 (300-½)	
RNP 0.30 DA		1677/35	395 (400-⅝)	

AUTHORIZATION REQUIRED