

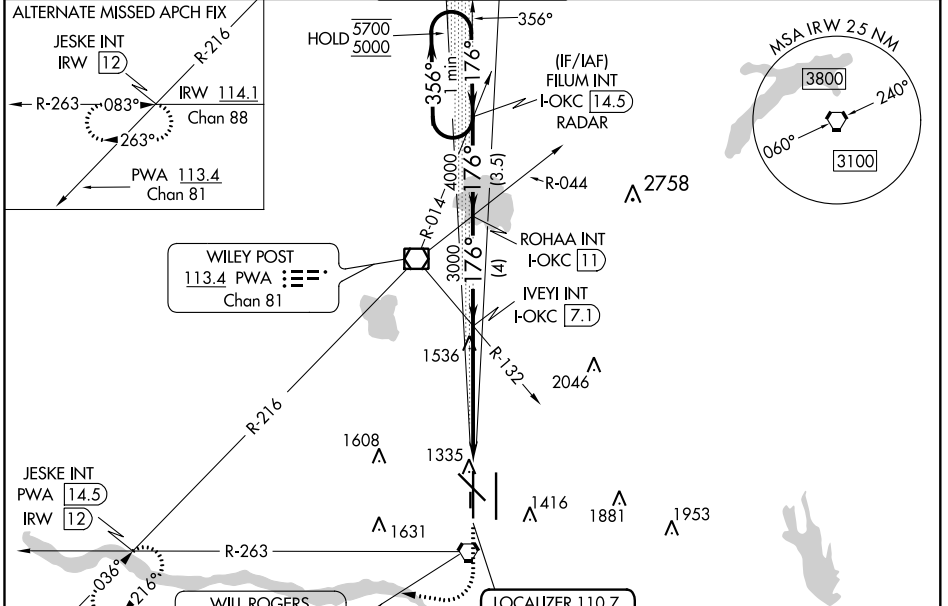
LOC/DME I-OKC <b>110.7</b> Chan 44	APP CRS <b>176°</b>	Rwy Idg TDZE Apt Elev	<b>9800</b> <b>1282</b> <b>1296</b>
--	------------------------	-----------------------------	---

# ILS RWY 17R (SA CAT II)

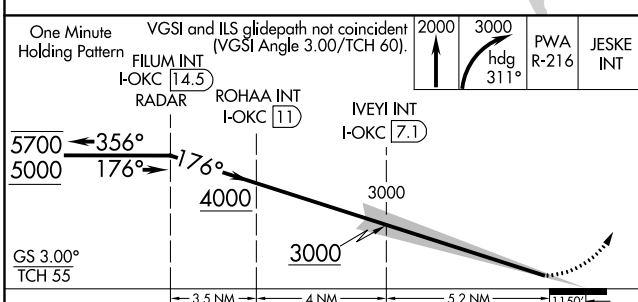
WILL ROGERS WORLD (OKC)

RADAR required for procedure entry.		MALSR 	MISSED APPROACH: Climb to 2000 then climbing right turn to 3000 on heading 311° and on PWA VOR/DME R-216 to JESKE INT/PWA 14.5 DME and hold.	
<p>ASR</p> <p>Simultaneous approach authorized. Reduced lighting: requires specific OPSPEC, MSPEC, or LOA approval and use of autoland or HUD to touchdown.</p>				

D-ATIS <b>125.85</b>	OKE CITY APP CON <b>124.6 266.8</b>	<b>ROGERS TOWER</b> <b>119.35 269.45</b>	GND CON <b>121.9 348.6</b>	CLNC DEL <b>124.35</b>
-------------------------	--	---	-------------------------------	---------------------------

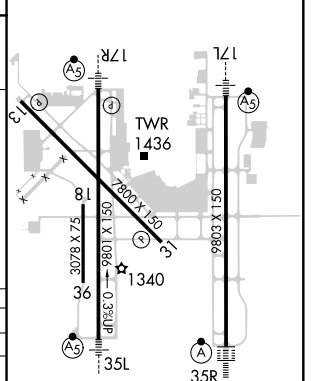


ELEV 1296	<b>D</b>	TDZE 1282
-----------	----------	-----------



CATEGORY	A	B	C	D
5-ILS 17R	RA 102/12 100 DA 1382			

**SA CATEGORY II ILS - SPECIAL AIRCREW & AIRCRAFT CERTIFICATION REQUIRED**



TDZ/CL Rwy 35R  
MIRL Rwy 13-31  
REIL Rwys 13 and 31  
HIRL Rwys 17L-35R and 17R-35L

SC-1, 16 JUN 2022 to 14 JUL 2022

SC-1, 16 JUN 2022 to 14 JUL 2022