

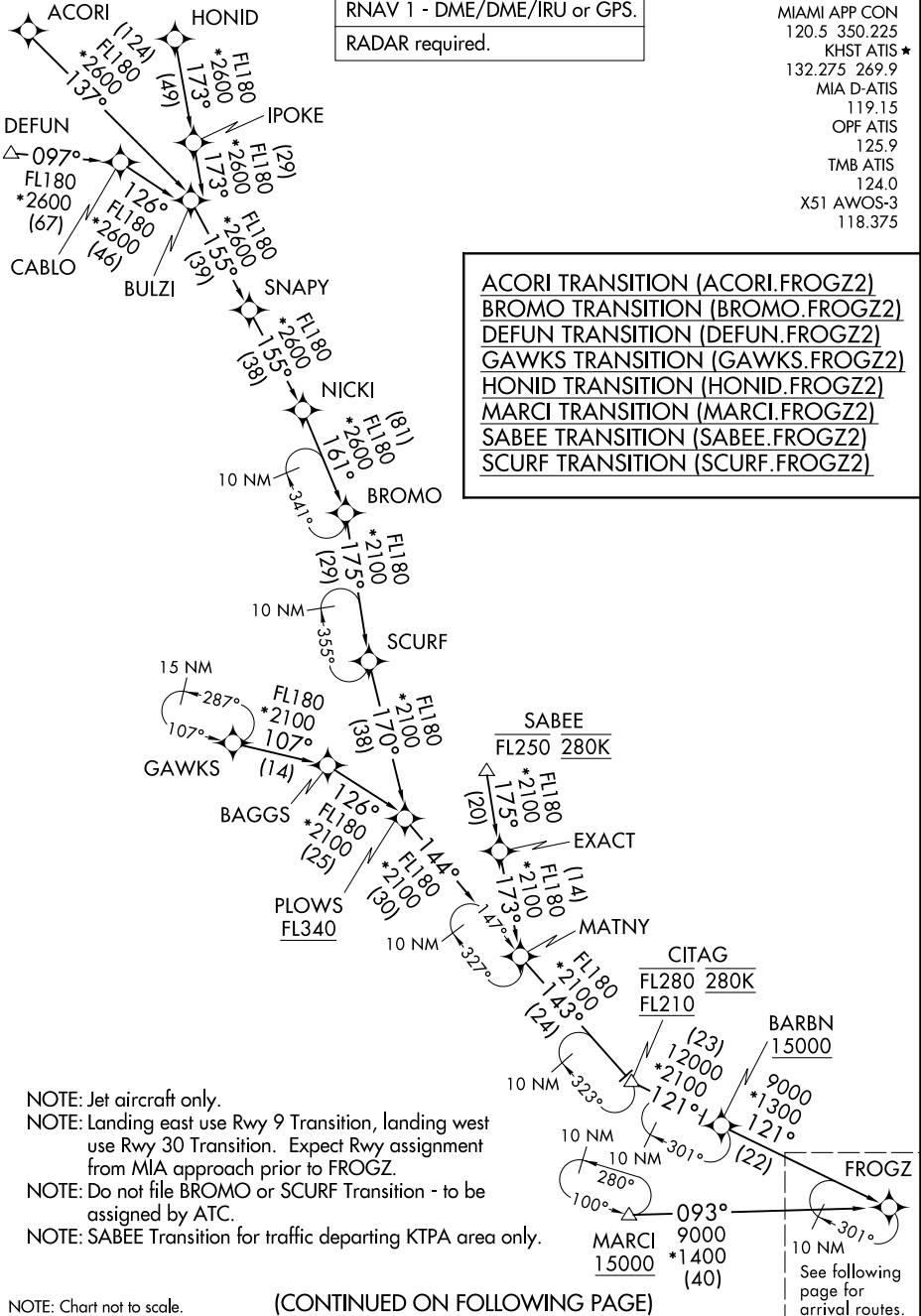
FROGZ TWO ARRIVAL (RNAV) Transition Routes

MIAMI, FLORIDA

RNAV 1 - DME/DME/IRU or GPS.
RADAR required.

MIAMI APP CON
120.5 350.225
KHST ATIS *
132.275 269.9
MIA D-ATIS
119.15
OPF ATIS
125.9
TMB ATIS
124.0
X51 AWOS-3
118.375

- ACORI TRANSITION (ACORI.FROGZ2)
- BROMO TRANSITION (BROMO.FROGZ2)
- DEFUN TRANSITION (DEFUN.FROGZ2)
- GAWKS TRANSITION (GAWKS.FROGZ2)
- HONID TRANSITION (HONID.FROGZ2)
- MARCI TRANSITION (MARCI.FROGZ2)
- SABEE TRANSITION (SABEE.FROGZ2)
- SCURF TRANSITION (SCURF.FROGZ2)



SE-3, 16 JUN 2022 to 14 JUL 2022

SE-3, 16 JUN 2022 to 14 JUL 2022

- NOTE: Jet aircraft only.
- NOTE: Landing east use Rwy 9 Transition, landing west use Rwy 30 Transition. Expect Rwy assignment from MIA approach prior to FROGZ.
- NOTE: Do not file BROMO or SCURF Transition - to be assigned by ATC.
- NOTE: SABEE Transition for traffic departing KTPA area only.

NOTE: Chart not to scale.

(CONTINUED ON FOLLOWING PAGE)

10 NM
See following page for arrival routes.