

MERIDIAN, MISSISSIPPI

HI-TACAN or VOR-B

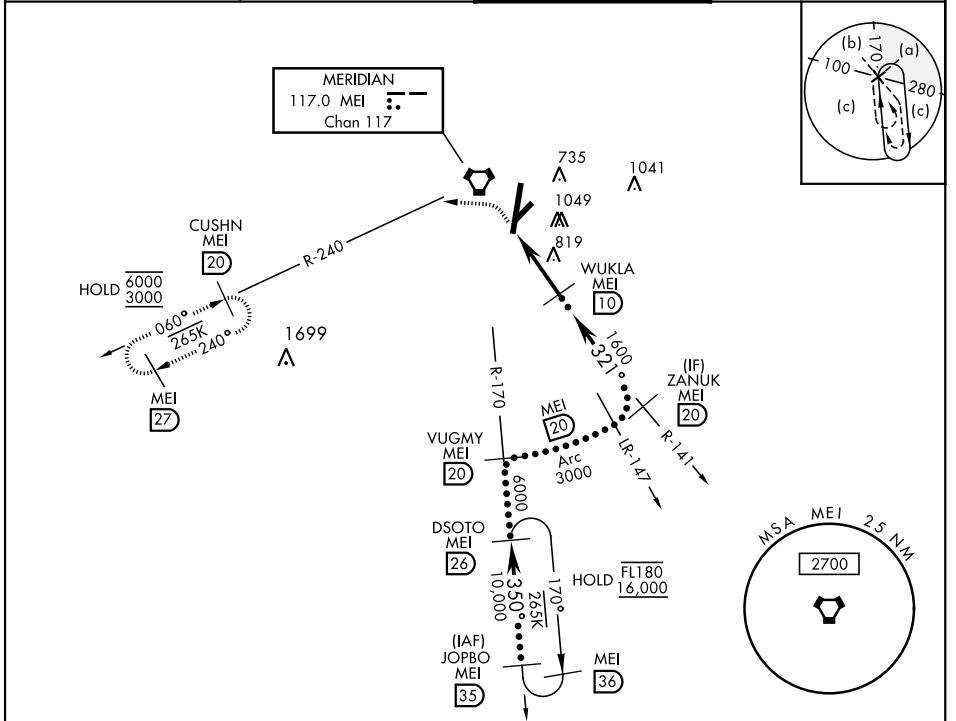
VORTAC MEI 117.0 Chan 117	APCH CRS 321°	Rwy ldg TDZE Arprt Elev N/A 298	AL-254 [USAF]	KEY FLD (KMEI)
---	-------------------------	--	---------------	----------------

DME required.

* Circling to Rwy 22 NA at night. Circling NA SE of Rwy 1 and 22.

MISSED APPROACH: Climbing left turn to 3000 on heading 270° and MEI VORTAC R-240 to CUSHN/ MEI 20 DME and hold.

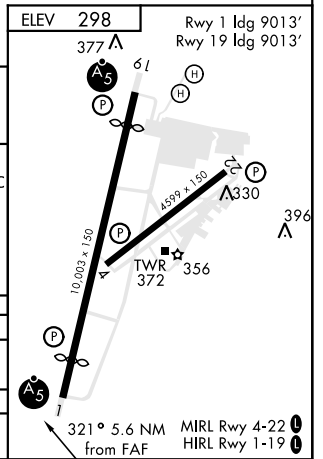
ATIS 126.475 291.675	MERIDIAN APP CON 120.5 269.325	TOWER★ 133.975 (CTAF) 257.8	GND CON 121.9 348.6
--------------------------------	--	--	-------------------------------



SC-4, 16 JUN 2022 to 14 JUL 2022

SC-4, 16 JUN 2022 to 14 JUL 2022

EMERG SAFE ALT 100 NM 3700			
R-170 JOPBO 35	R-170 DSOTO 26	R-170 VUGMY 20	R-141 ZANUK 20
16,000	10,000	6000	1600
350°		321°	
Arc		5.6 NM	
3000		MEI R-240	CUSHN MEI 20
WUKLA 10, ORUNE 4.4, VORTAC			
CATEGORY	C	D	E
CIRCLING*	1140-2½ 842 (900-2½)	1140-2¾ 842 (900-2¾)	1140-3 842 (900-3)
HATTIESBURG-LAUREL RGNL ALTIMETER SETTING			
CIRCLING*	1280-3	982	(1000-3)



MERIDIAN, MISSISSIPPI 32° 20' N-88° 45' W KEY FLD (KMEI)

Amdt 4A 20JUN19

HI-TACAN or VOR-B