

WAAS CH 42829 W21A	APP CRS 212°	Rwy Idg TDZE 887 Apt Elev 887	7015
--	------------------------	---	-------------

RNAV (GPS) RWY 21

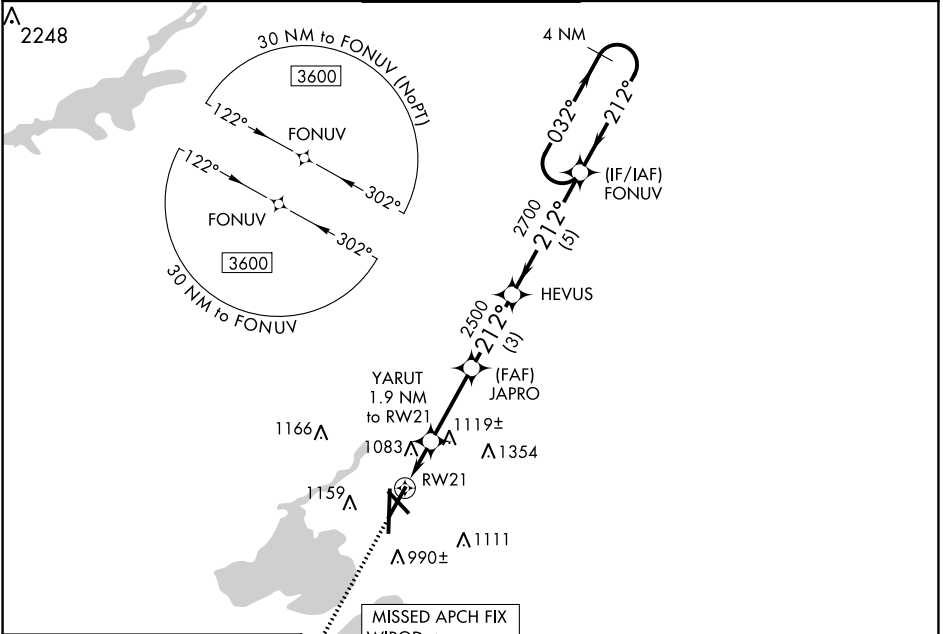
DANE COUNTY RGNL/TRUAX FLD (MSN)

⚠ For uncompensated Baro-VNAV systems, LNAV/VNAV NA below -20°C (-4°F) or above 54°C (130°F). DME/DME RNP-0.3 NA. For inop MALSR, increase LNAV/VNAV all Cats visibility to 1¾ mile and LNAV Cat C/D visibility to 1½ mile.

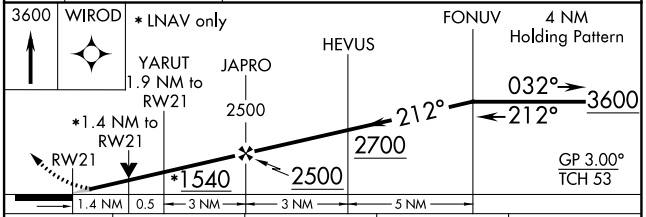
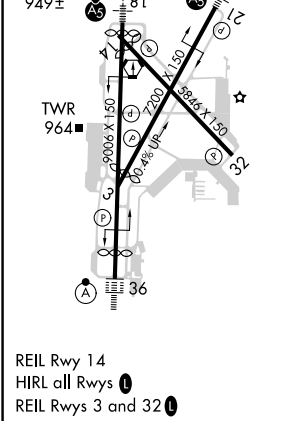


MISSED APPROACH:
Climb to 3600 direct WIROD and hold.

ATIS 124.65 278.3	MADISON APP CON * 135.45 343.7	MADISON TOWER * 119.3 (CTAF) 0 257.8	GND CON 121.9 348.6	CLNC DEL 121.625	UNICOM 122.95
-----------------------------	--	--	-------------------------------	----------------------------	-------------------------



ELEV 887	D TDZE 887
----------	-------------------



CATEGORY	A	B	C	D
LPV DA	1087-½		200 (200-½)	
LNAV/VNAV DA	1412-1¾		525 (600-1¾)	
LNAV MDA	1380-½ 493 (500-½)		1380-1 493 (500-1)	
C CIRCLING	1420-1 533 (600-1)	1460-1 573 (600-1)	1460-1½ 573 (600-1½)	1700-2¾ 813 (900-2¾)

EC-3, 16 JUN 2022 to 14 JUL 2022

EC-3, 16 JUN 2022 to 14 JUL 2022