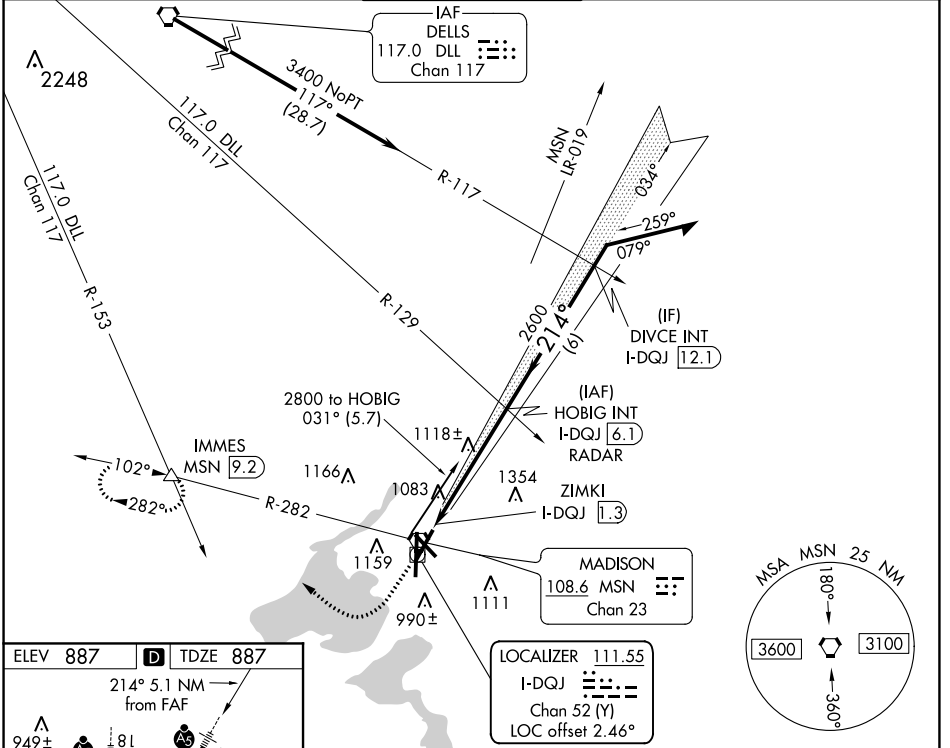


LOC/DME I-DQJ <b>111.55</b> Chan <b>52 (Y)</b>	APP CRS <b>214°</b>	Rwy Idg TDZE Apt Elev	<b>7015</b> <b>887</b> <b>887</b>
--	------------------------	-----------------------------	---

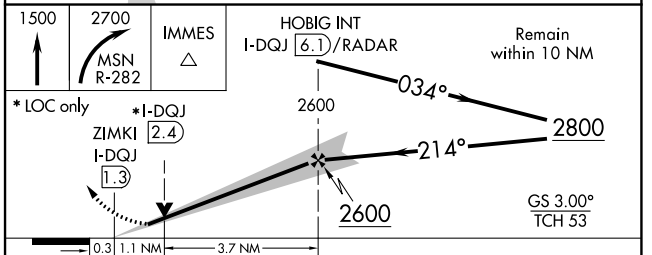
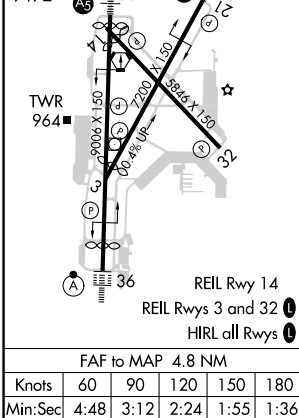
**ILS or LOC RWY 21**  
DANE COUNTY RGNL/TRUAX FLD (MSN)

For inop MALSR, increase S-LOC 21 Cat C/D visibility to 1 3/8 mile.	MALSR	MISSED APPROACH: Climb to 1500 then climbing right turn to 2700 on MSN VORTAC R-282 to IMMES INT/MSN 9.2 DME and hold.
		VORTAC MSN 25 NM 180° 360°

ATIS <b>124.65 278.3</b>	MADISON APP CON * <b>135.45 343.7</b>	MADISON TOWER * <b>119.3 (CTAF) 257.8</b>	GND CON <b>121.9 348.6</b>	CINC DEL <b>121.625</b>	UNICOM <b>122.95</b>
-----------------------------	--	--	-------------------------------	----------------------------	-------------------------



ELEV 887	<b>D</b> TDZE 887
214° 5.1 NM from FAF	



CATEGORY	A	B	C	D
S-ILS 21	1137-1/2 250 (300-1/2)			
S-LOC 21	1380-1/2	493 (500-1/2)	1380-1	493 (500-1)
<b>C</b> CIRCLING	1420-1 533 (600-1)	1460-1 573 (600-1)	1460-1 1/2 573 (600-1 1/2)	1700-2 3/4 813 (900-2 3/4)

EC-3, 16 JUN 2022 to 14 JUL 2022

EC-3, 16 JUN 2022 to 14 JUL 2022