

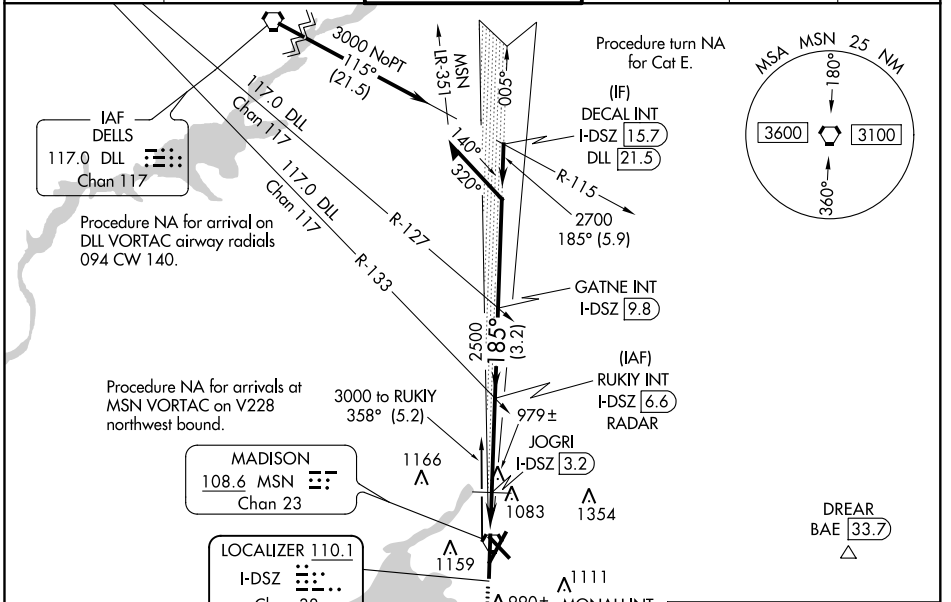
LOC/DME I-DSZ 110.1	APP CRS 185°	Rwy Idg 8606
Chan 38		TDZE 864
		Apt Elev 887

ILS or LOC RWY 18

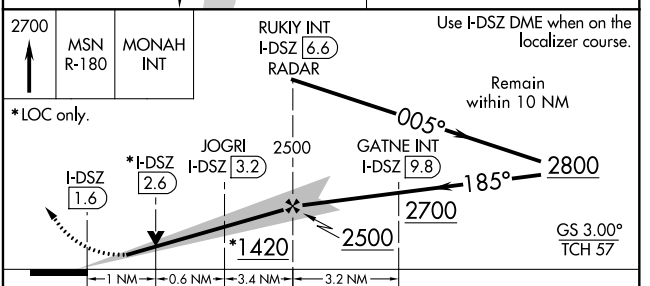
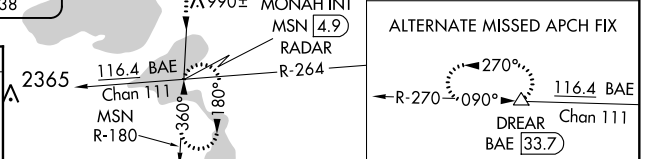
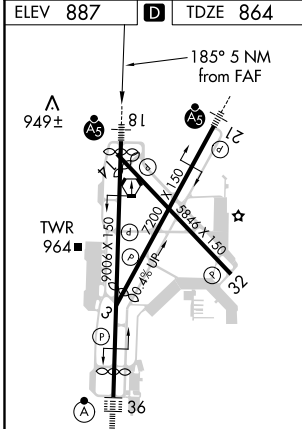
DANE COUNTY RGNL/TRUAX FLD (MSN)

DME required.	MALS R	MISSED APPROACH: Climb to 2700 on MSN VORTAC R-180 to MONAH INT/ MSN VORTAC 4.9 DME/RADAR and hold.
<p>For inop ALS, increase S-ILS 18 Cat E visibility to RVR 4000 and S-LOC 18 Cat C/D/E visibility to RVR 5500.</p> <p>**RVR 1800 authorized with use of FD or AP or HUD to DA.</p>		

ATIS 124.65 278.3	MADISON APP CON * 135.45 343.7	MADISON TOWER * 119.3 (CTAF) 0 257.8	GND CON 121.9 348.6	CLNC DEL 121.625	UNICOM 122.95
-----------------------------	--	--	-------------------------------	----------------------------	-------------------------



ELEV 887	D	TDZE 864
----------	---	----------



CATEGORY	A	B	C	D	E
S-ILS 18 **	1064/24 200 (200-½)				
S-LOC 18	1240/24	376 (400-½)	1240/35	376 (400-½)	
CIRCLING	1420-1 533 (600-1)	1460-1 573 (600-1)	1460-1½ 573 (600-1½)	1700-2¾ 813 (900-2¾)	1700-3 813 (900-3)

HIRL all Rwy's
REIL Rwy's 3 and 32
REIL Rwy 14

EC-3, 16 JUN 2022 to 14 JUL 2022

EC-3, 16 JUN 2022 to 14 JUL 2022