

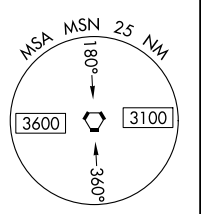
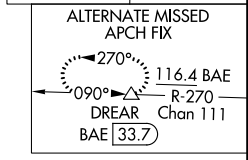
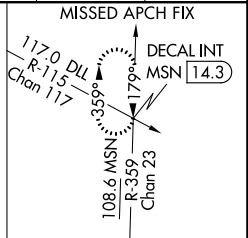
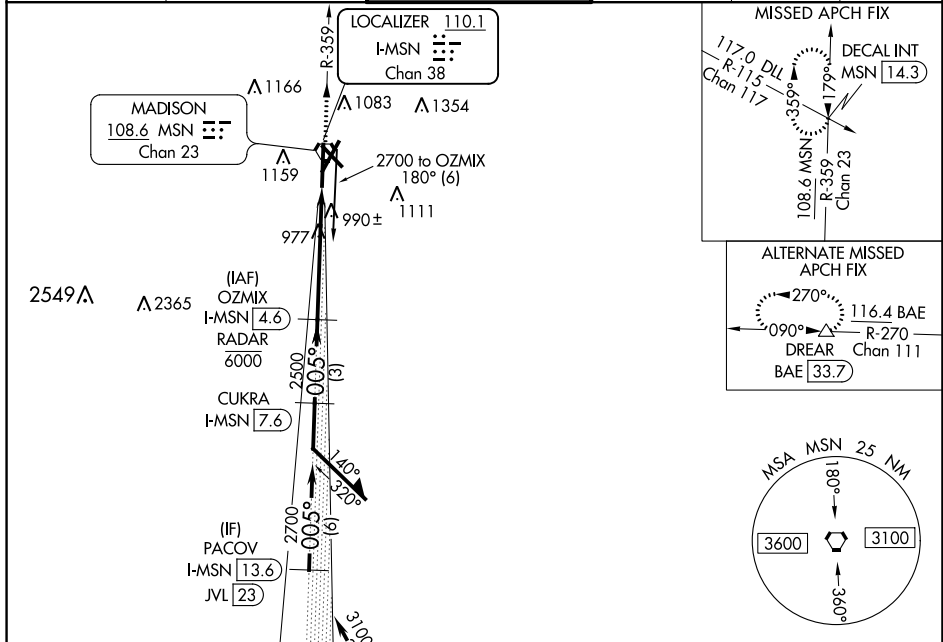
LOC/DME I-MSN 110.1 Chan 38	APP CRS 005°	Rwy Idg TDZE 862 Apt Elev 887
---	------------------------	---

ILS RWY 36 (CAT II & III)

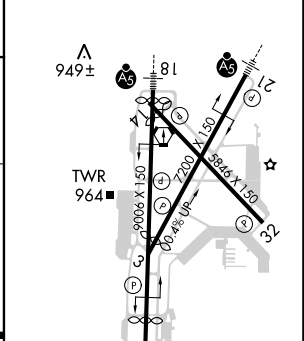
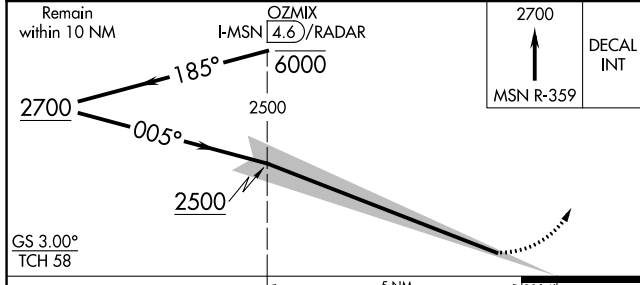
DANE COUNTY RGNL/TRUAX FLD (MSN)

<p>DME or RADAR required. S-ILS R36 NA when control tower closed. CAT II: RVR 1000 authorized with specific OPSPEC, MSPEC, or LOA approval and use of autoland or HUD to touchdown.</p>	<p>ALSIF-2</p>	<p>MISSED APPROACH: Climb to 2700 on MSN VORTAC R-359 to DECAL INT/MSN 14.3 DME and hold.</p>
		<p>ALSIF-1</p>

ATIS 124.65 278.3	MADISON APP CON ★ 135.45 343.7	MADISON TOWER ★ 119.3 (CTAF) 0257.8	GND CON 121.9 348.6	CLNC DEL 121.625	UNICOM 122.95
-----------------------------	--	---	-------------------------------	----------------------------	-------------------------



ELEV 887	D	TDZE 862
----------	----------	----------



CATEGORY	A	B	C	D
S-ILS 36		CAT II RA 109/12	100 DA 962	
S-ILS 36		CAT III RVR 06		

CATEGORY II & III ILS - SPECIAL AIRCREW & AIRCRAFT CERTIFICATION REQUIRED

HIRL all Rwy's
REIL Rwy's 3 and 32
REIL Rwy 14

EC-3, 16 JUN 2022 to 14 JUL 2022

EC-3, 16 JUN 2022 to 14 JUL 2022