

LOC/DME I-DSZ <b>110.1</b> Chan 38	APP CRS <b>185°</b>	Rwy Idg TDZE Apt Elev	<b>8606</b> <b>864</b> <b>887</b>
--	------------------------	-----------------------------	---

**ILS RWY 18 (SA CAT I & II)**  
DANE COUNTY RGNL/TRUAX FLD (MSN)

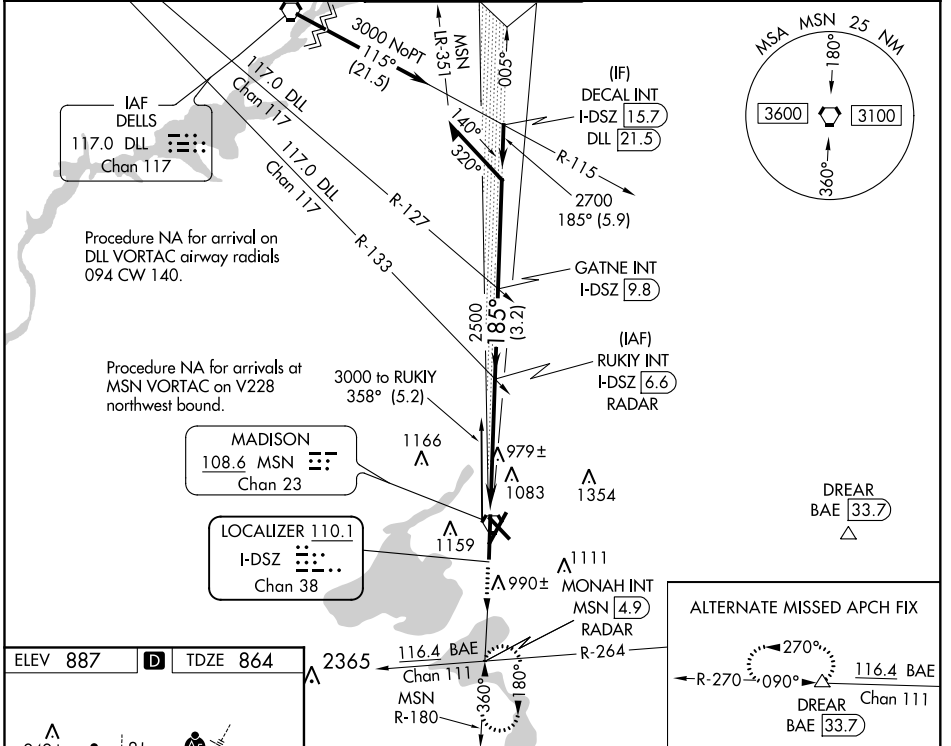
DME required.

Procedure NA when tower closed.  
SA CAT I: Requires specific OPSPEC, MSPEC, or LOA approval and use of HUD to DH.  
SA CAT II: Reduced lighting: Requires specific OPSPEC MSPEC, or LOA approval and use of autoland or HUD to touchdown.

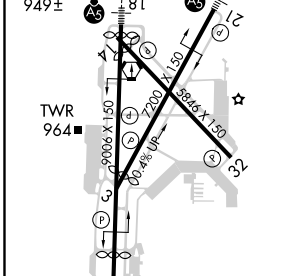
MALSR

MISSED APPROACH: Climb to 2700 on MSN VORTAC R-180 to MONAH INT/MSN VORTAC 4.9 DME/RADAR and hold.

ATIS <b>124.65 278.3</b>	MADISON APP CON ★ <b>135.45 343.7</b>	MADISON TOWER ★ <b>119.3 (CTAF) 0 257.8</b>	GND CON <b>121.9 348.6</b>	CLNC DEL <b>121.625</b>	UNICOM <b>122.95</b>
-----------------------------	--	--	-------------------------------	----------------------------	-------------------------



ELEV 887	D	TDZE 864
----------	---	----------



CATEGORY	A	B	C	D
S-ILS 18	SA CAT I	RA 153/14	150 DA 1014	
S-ILS 18	SA CAT II	RA 103/12	100 DA 964	

**SA CATEGORY I & II ILS SPECIAL AIRCREW & AIRCRAFT CERTIFICATION REQUIRED**

EC-3, 16 JUN 2022 to 14 JUL 2022

EC-3, 16 JUN 2022 to 14 JUL 2022