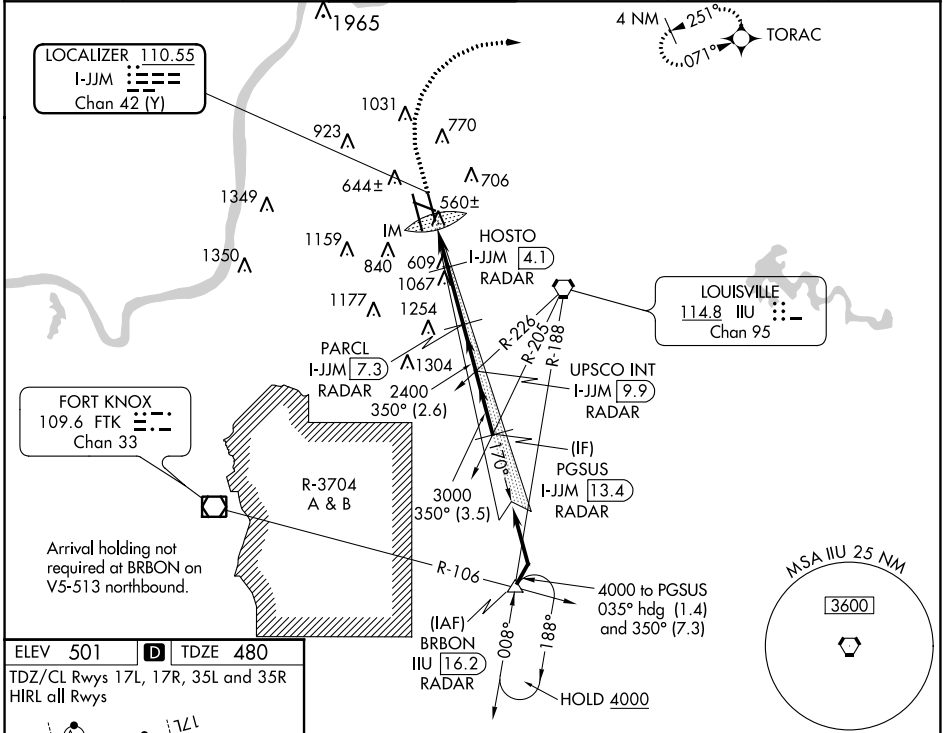


LOC/DME I-JJM 110.55 Chan 42 (Y)	APP CRS 350°	Rwy Idg 7800 TDZE 480 Apt Elev 501
--	------------------------	---

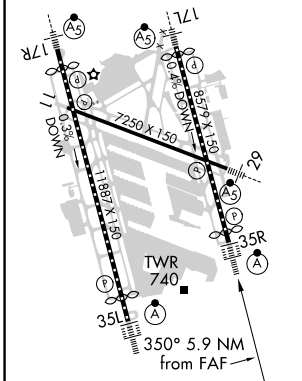
ILS or LOC RWY 35R
LOUISVILLE MUHAMMAD ALI INTL (SDF)

RNAV 1-GPS required. DME or RADAR required for LOC only.		ALSF-2	MISSED APPROACH: Climb to 1600 then climbing right turn to 4000 direct TORAC and hold.
Simultaneous approach authorized. Circling Rwy 11 NA at night.			

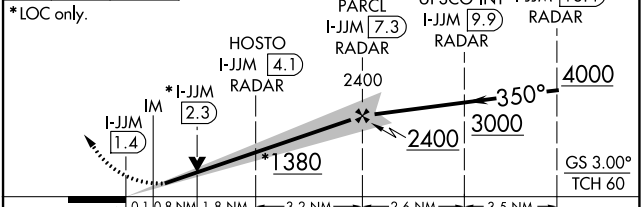
D-ATIS 118.725	LOUISVILLE APP CON 132.075 327.0	LOUISVILLE TOWER 124.2 257.8	GND CON 121.7 348.6	CLNC DEL 126.1 275.8	CPDLC
--------------------------	--	--	-------------------------------	--------------------------------	-------



ELEV 501	D TDZE 480
TDZ/CL Rwy's 17L, 17R, 35L and 35R HIRL all Rwy's	



1600	4000	TORAC	VGSI and ILS glidepath not coincident (VGSI Angle 3.00/TCH 72).
------	------	-------	---



CATEGORY	A	B	C	D
S-ILS 35R	680/18 200 (200-½)			
S-LOC 35R	820/24	340 (400-½)	820/26	340 (400-½)
C CIRCLING	1040-1 539 (600-1)	1140-1 639 (700-1)	1160-1¾ 659 (700-1¾)	1400-3 899 (900-3)

LOUISVILLE, KENTUCKY
Amdt 5 15AUG19

38°10'N-85°44'W

LOUISVILLE MUHAMMAD ALI INTL (SDF)
ILS or LOC RWY 35R

SE-1, 16 JUN 2022 to 14 JUL 2022

SE-1, 16 JUN 2022 to 14 JUL 2022