


LOC/DME I-PKI 111.95	APP CRS 170°	Rwy ldg 7800
Chan 56 (Y)	TDZE 499	Apt Elev 501

ILS or LOC RWY 17L

LOUISVILLE MUHAMMAD ALI INTL (SDF)

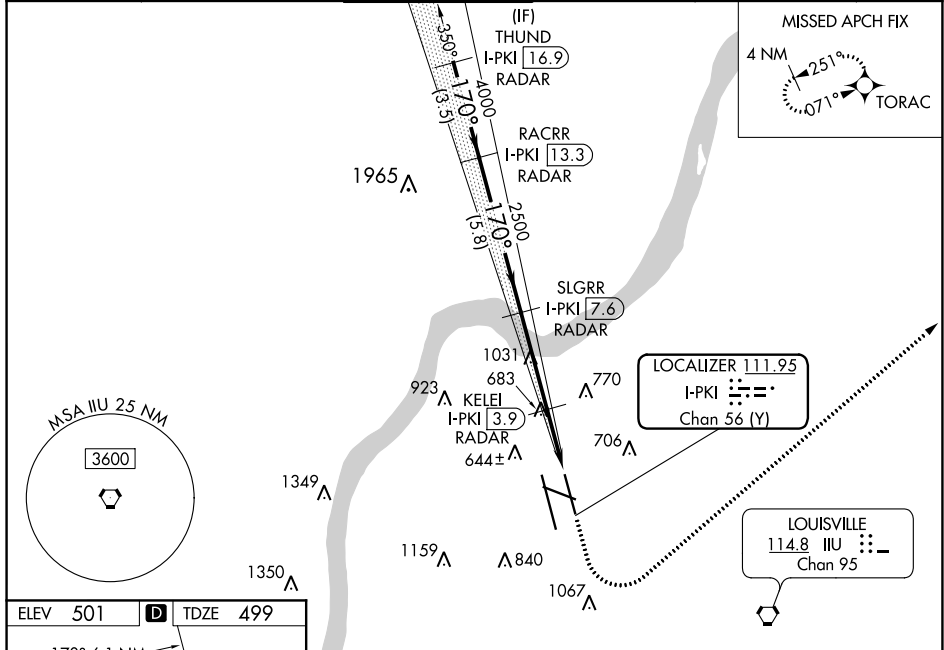
RNAV 1-GPS required.
DME or RADAR required.

⚠ Circling Rwy 11 NA at night. Simultaneous approach authorized.
⚠ For inop ALS, increase S-LOC 17L Cat C/D visibility to 1 3/8 SM.

MALSR 

MISSED APPROACH: Climb to 1600 then climbing left turn to 4000 direct TORAC and hold.

D-ATIS 118.725	LOUISVILLE APP CON 132.075 327.0	LOUISVILLE TOWER 124.2 257.8	GND CON 121.7 348.6	CLNC DEL 126.1 275.8	CPDLC
--------------------------	--	--	-------------------------------	--------------------------------	-------



ELEV 501 TDZE 499

170° 6.1 NM from FAF

HIRL all Rwys TDZ/CL Rwys 17L, 17R, 35L, and 35R

FAF to MAP 6.1 NM

Knots	60	90	120	150	180
Min:Sec	6:06	4:04	3:03	2:26	2:02

VGSI and ILS glidepath not coincident (VGSI Angle 3.32/TCH 71).

1600 4000 TORAC

*LOC only.

CATEGORY	A	B	C	D
S-ILS 17L	699/18		200 (200-1/2)	
S-LOC 17L	1000/24	501 (500-1/2)	1000/55	501 (500-1)
C CIRCLING	1040-1 539 (600-1)	1140-1 639 (700-1)	1160-1 3/4 659 (700-1 3/4)	1400-3 899 (900-3)

SE-1, 16 JUN 2022 to 14 JUL 2022

SE-1, 16 JUN 2022 to 14 JUL 2022