

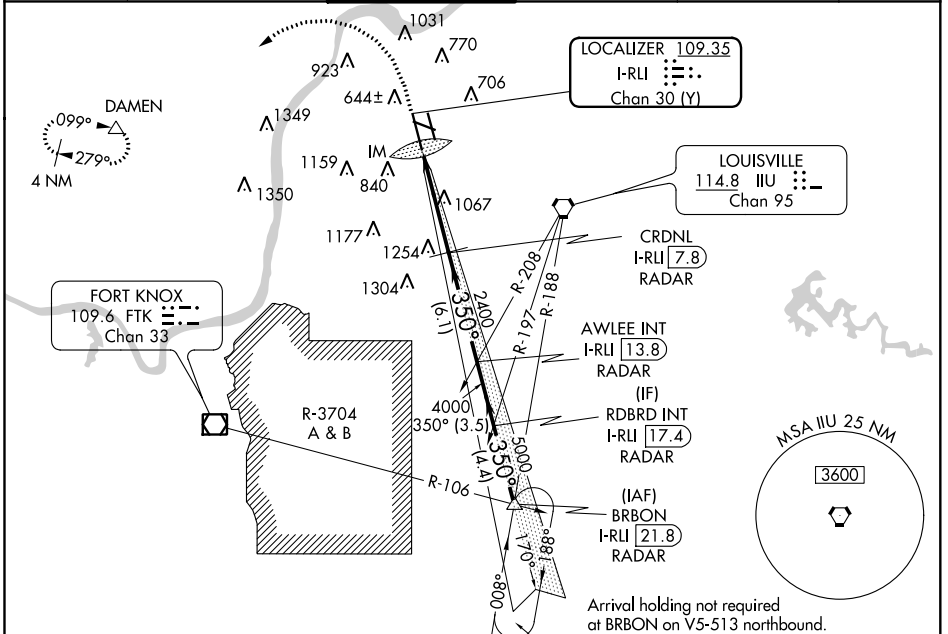
LOC/DME I-RLI 109.35	APP CRS 350°	Rwy Idg TDZE 10000 464
Chan 30 (Y)		Apt Elev 501

ILS RWY 35L (SA CAT I)

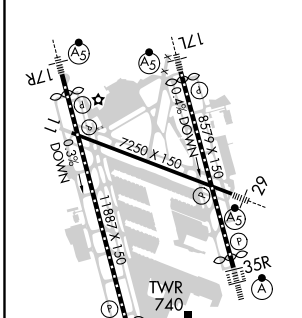
LOUISVILLE MUHAMMAD ALI INTL (SDF')

<p>RNAV 1-GPS required. DME or RADAR required.</p> <p>⚠ Simultaneous approach authorized. Requires specific OPSPEC, MSPEC, or LOA approval and use of HUD to DH.</p>	<p>ALS F-2</p> <p>MISSED APPROACH: Climb to 1600 then climbing left turn to 3000 direct to DAMEN and hold. (GPS required)</p>
--	---

D-ATIS 118.725	LOUISVILLE APP CON 132.075 327.0	LOUISVILLE TOWER 124.2 257.8	GND CON 121.7 348.6	CLNC DEL 126.1 275.8	CPDLC
--------------------------	--	--	-------------------------------	--------------------------------	-------



ELEV 501	D	TDZE 464
----------	----------	----------



1600	3000	DAMEN	VGSI and ILS glidepath not coincident (VGSI Angle 3.00/TCH 75).
------	------	-------	---

CRDNL I-RLI (7.8) RADAR	AWLEE INT I-RLI (13.8) RADAR	RDBRD INT I-RLI (17.4) RADAR
-------------------------	------------------------------	------------------------------

IM	2400	350°	5000	GS 3.00° TCH 59
1119	5.9 NM	6.1 NM	3.5 NM	
CATEGORY	A	B	C	D
S-ILS 35L	RA 154/14 150 DA 614			

SA CATEGORY I ILS - SPECIAL AIRCREW & AIRCRAFT CERTIFICATION REQUIRED

SE-1, 16 JUN 2022 to 14 JUL 2022

SE-1, 16 JUN 2022 to 14 JUL 2022