

TRTON TWO DEPARTURE (RNAV)

AL-237 (FAA)

LOS ANGELES INTL (LAX)
LOS ANGELES, CALIFORNIA

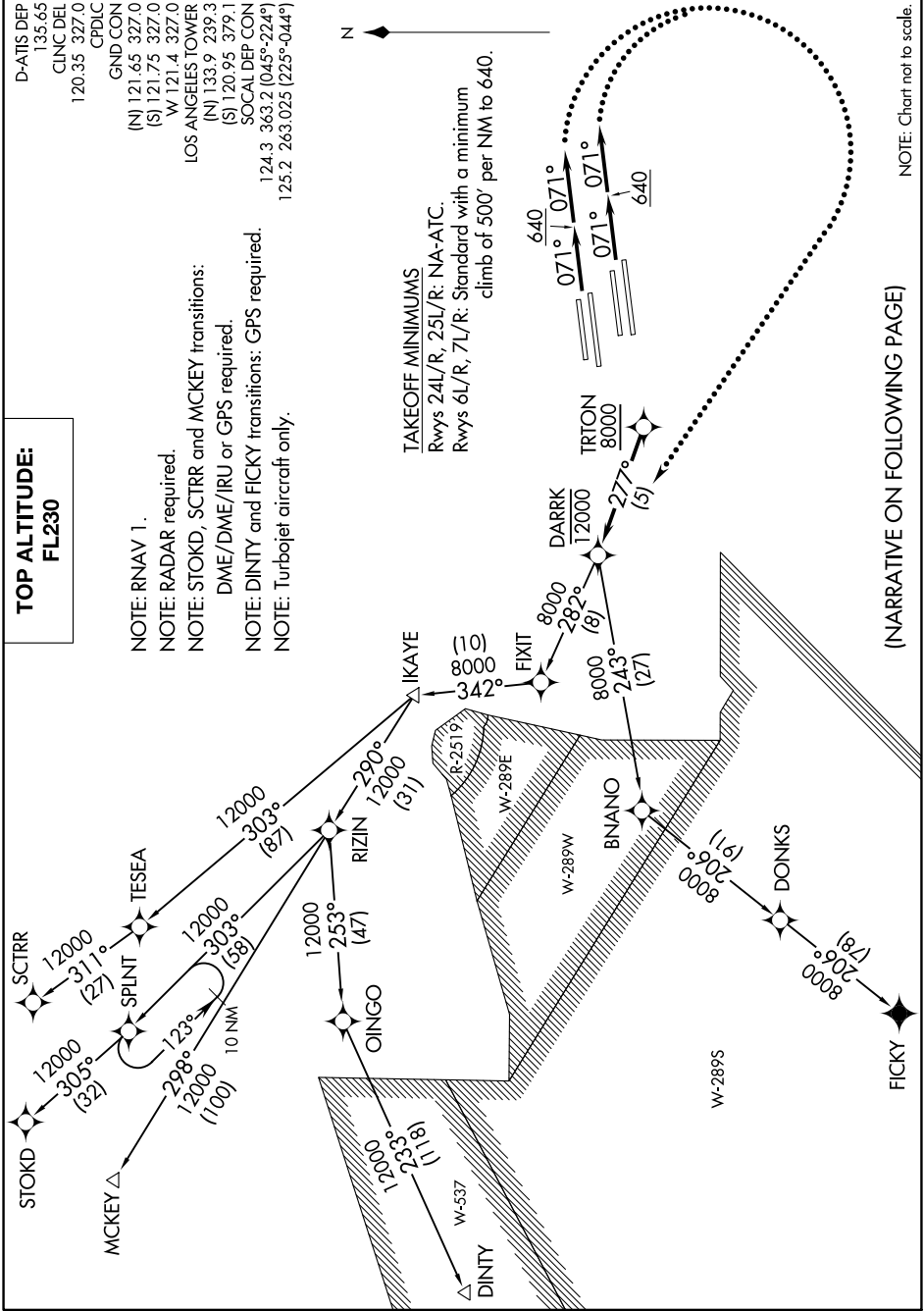
SW-3, 16 JUN 2022 to 14 JUL 2022

**TOP ALTITUDE:
FL230**

D-ATIS DEP 135.65
 CLINC DEL 120.35 327.0
 CPDLC
 GND/CON (N) 121.65 327.0
 (S) 121.75 327.0
 W 121.4 327.0
 LOS ANGELES TOWER (N) 133.9 239.3
 (S) 120.95 379.1
 SOCIAL DEP CON 124.3 363.2 (045°-224°)
 125.2 263.025 (225°-044°)

NOTE: RNAV 1.
 NOTE: RADAR required.
 NOTE: STOKD, SCTRR and MCKEY transitions:
 DME/DME/IRU or GPS required.
 NOTE: DINTY and FICKY transitions: GPS required.
 NOTE: Turboprop aircraft only.

TAKEOFF MINIMUMS
 Rwy's 24L/R, 25L/R: NA-ATC.
 Rwy's 6L/R, 7L/R: Standard with a minimum
 climb of 500' per NM to 640.



(NARRATIVE ON FOLLOWING PAGE)

NOTE: Chart not to scale.

SW-3, 16 JUN 2022 to 14 JUL 2022

TRTON TWO DEPARTURE (RNAV)

LOS ANGELES, CALIFORNIA
LOS ANGELES INTL (LAX)