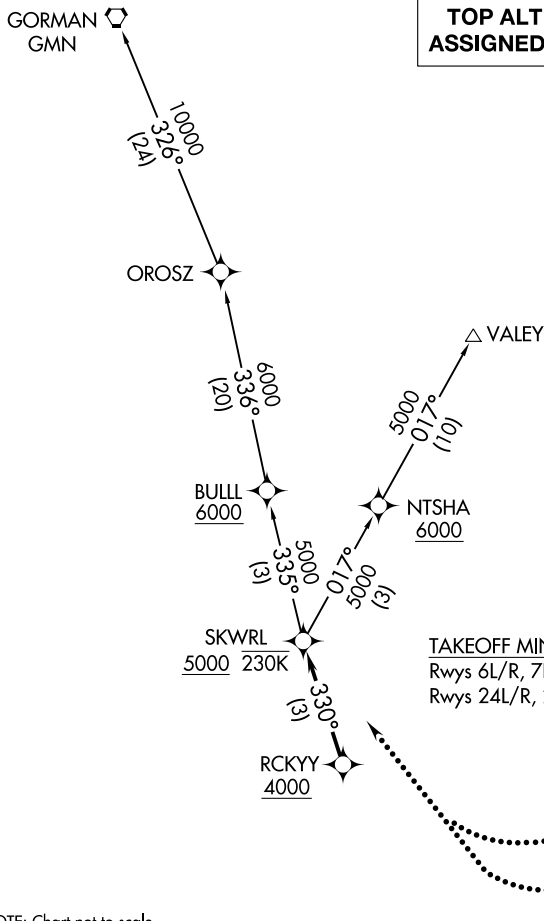


**TOP ALTITUDE:
ASSIGNED BY ATC**

- D-ATIS DEP 135.65
- CLNC DEL 120.35 327.0
- CPDLC
- GND CON
- (N) 121.65 327.0
- (S) 121.75 327.0
- (W) 121.4 327.0
- LOS ANGELES TOWER
- (N) 133.9 239.3
- (S) 120.95 379.1
- SOCAL DEP CON
- 124.3 363.2 (045°-224°)
- 125.2 263.025 (225°-044°)



NOTE: DME/DME/IRU or GPS required.
 NOTE: RADAR required.
 NOTE: RNAV 1.
 NOTE: Turboprop aircraft only.

TAKEOFF MINIMUMS

Rwys 6L/R, 7L/R: NA-ATC.
 Rwys 24L/R, 25L/R: Standard with minimum climb of 500' per NM to 640.

NOTE: Chart not to scale.

DEPARTURE ROUTE DESCRIPTION

TAKEOFF RUNWAYS 24L/R, 25 L/R: Climb heading 251° to 640, then on heading 251° or as assigned by ATC, expect vectors to cross RCKYY at or above 4000, then on track 330° to cross SKWRL at or above 5000, thence. . . .

. . . .on (transition). Maintain ATC assigned altitude. Expect filed altitude five minutes after departure.

LOST COMMUNICATIONS: If not in contact with departure control within five minutes after departure, turn right and proceed direct SKWRL W/P, climb to 7000 or filed altitude whichever is lower, and when able proceed direct filed or assigned route/fix/transition. Aircraft filing 8000 or above, climb to filed altitude ten minutes after departure.

GORMAN TRANSITION (SKWRL2.GMN)
VALEY TRANSITION (SKWRL2.VALEY)

SW-3, 16 JUN 2022 to 14 JUL 2022

SW-3, 16 JUN 2022 to 14 JUL 2022