

WAAS CH 61207 W06B	APP CRS 071°	Rwy Idg TDZE 116 Apt Elev 128	9748
--	------------------------	---	-------------

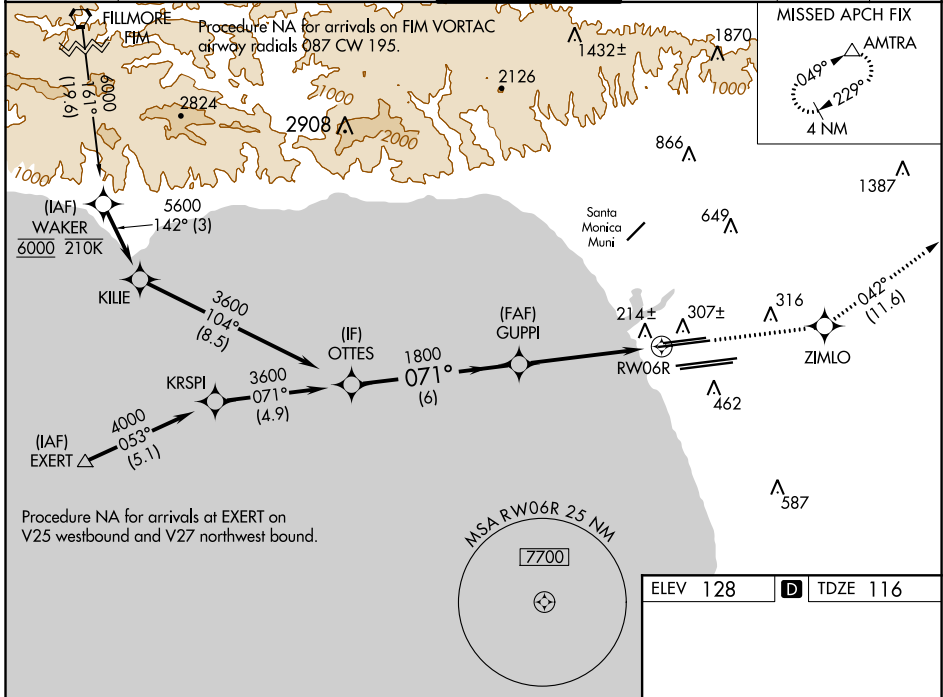
RNAV (GPS) Y RWY 6R

LOS ANGELES INTL (LAX)

▼ For uncompensated Baro-VNAV systems, LNAV/VNAV NA below 5°C (41°F) or above 54°C (130°F). DME/DME RNP-0.3 NA. For inop ALS, increase LNAV/VNAV all Cats visibility to RVR 4500, LNAV Cat C and D visibility to RVR 5500. Simultaneous approach authorized. LNAV procedure NA during simultaneous operations. Use of FD or AP providing RNAV track guidance required during simultaneous operations. # RVR 1800 authorized with use of FD or AP or HUD to DA.

MALS R	MISSED APPROACH: Climb to 3000 direct ZIMLO and track 042° to AMTRA and hold.
--------	--

D-ATIS ARR 133.8 DEP 135.65	SOCAL APP CON 124.3 363.2 (APCH FM WEST) 124.5 235.975 (225°-044°)	124.9 269.0 (090°-224°) 128.5 360.7 (045°-089°)	LOS ANGELES TOWER N 133.9 239.3 S 120.95 379.1	GND CON N 121.65 327.0 S 121.75 327.0 W 121.4 327.0	CLNC DEL 120.35 327.0	CPDLC
---	--	--	--	---	---------------------------------	-------



SW-3, 16 JUN 2022 to 14 JUL 2022

SW-3, 16 JUN 2022 to 14 JUL 2022

ELEV 128		TDZE 116	
<p>VGSI and RNAV glidepath not coincident (VGSI Angle 3.00/TCH 69).</p> <p>OTTES 3600 071° 1800 GUPPI</p> <p>GP 3.00° TCH 53</p> <p>6 NM 4.2 NM 0.9 NM</p> <p>*0.9 NM to RW06R *LNAV only</p>			
CATEGORY	A	B	C
LPV DA#		316/24	200 (200-½)
LNAV/VNAV DA		398/24	282 (300-½)
LNAV MDA	480/24	364 (400-½)	480/35 364 (400-⅝)
<p>TDZ/CL Rwy 6R, 7L, 24R, and 25L</p> <p>HIRL all Rwy's</p>			