

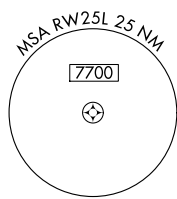
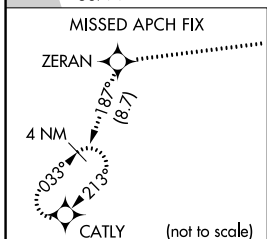
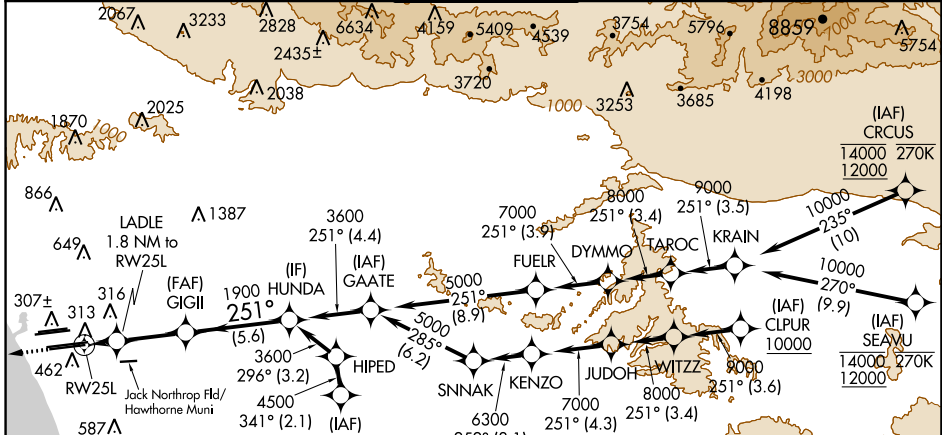
WAAS CH <b>53507</b> <b>W25A</b>	APP CRS <b>251°</b>	Rwy Idg <b>11095</b> TDZE <b>104</b> Apt Elev <b>128</b>
--	------------------------	--

# RNAV (GPS) Y RWY 25L

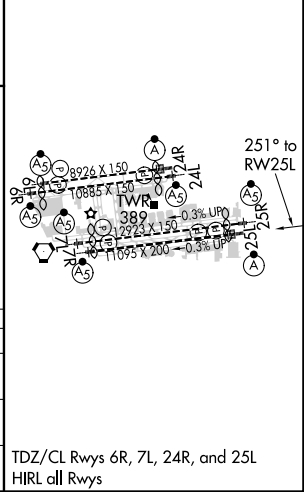
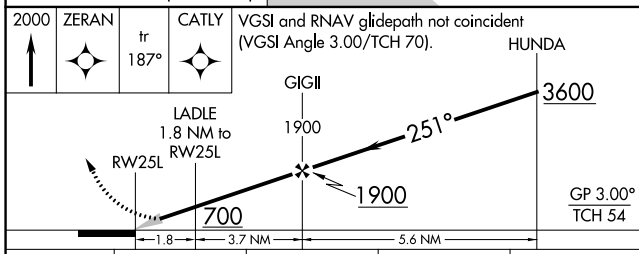
LOS ANGELES INTL (LAX)

RNP APCH.	ALSF-2 	MISSED APPROACH: Climb to 2000 direct ZERAN and on track 187° to CATLY and hold.
<p>▼ For uncompensated Baro-VNAV systems, LNAV/VNAV NA below 5°C or above 54°C. For inop ALS, increase LPV all Cats visibility to RVR 4500. Simultaneous approach authorized. Simultaneous approach authorized with HHR 25. LNAV procedure NA during simultaneous operations. Use of FD or AP required during simultaneous operations.</p>		

D-ATIS ARR <b>133.8</b> DEP <b>135.65</b>	SOCAL APP CON <b>124.3 363.2</b> [APCH FM WEST] <b>124.5 235.975</b> [225°-044°]	<b>124.9 269.0</b> (090°-224°) <b>128.5 360.7</b> [045°-089°]	LOS ANGELES TOWER <b>N 133.9 239.3</b> <b>S 120.95 379.1</b>	GND CON <b>N 121.65 327.0</b> <b>S 121.75 327.0</b> <b>W 121.4 327.0</b>	CLNC DEL <b>120.35</b> <b>327.0</b>	CPDLC
---	--	--	--	---	---	-------



ELEV 128	<b>D</b> TDZE 104
----------	-------------------



CATEGORY	A	B	C	D
LPV DA		365/20	261 (300-½)	
LNAV/VNAV DA		575/60	471 (500-1½)	
LNAV MDA	640/24	536 (600-½)	640/55	536 (600-1)

TDZ/CL Rwws 6R, 7L, 24R, and 25L  
HIRL all Rwws

SW-3, 16 JUN 2022 to 14 JUL 2022

SW-3, 16 JUN 2022 to 14 JUL 2022