

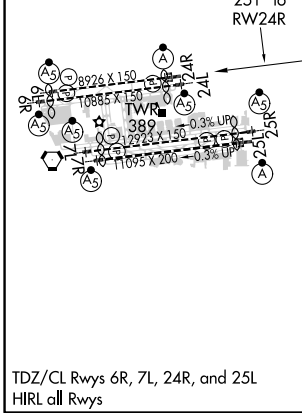
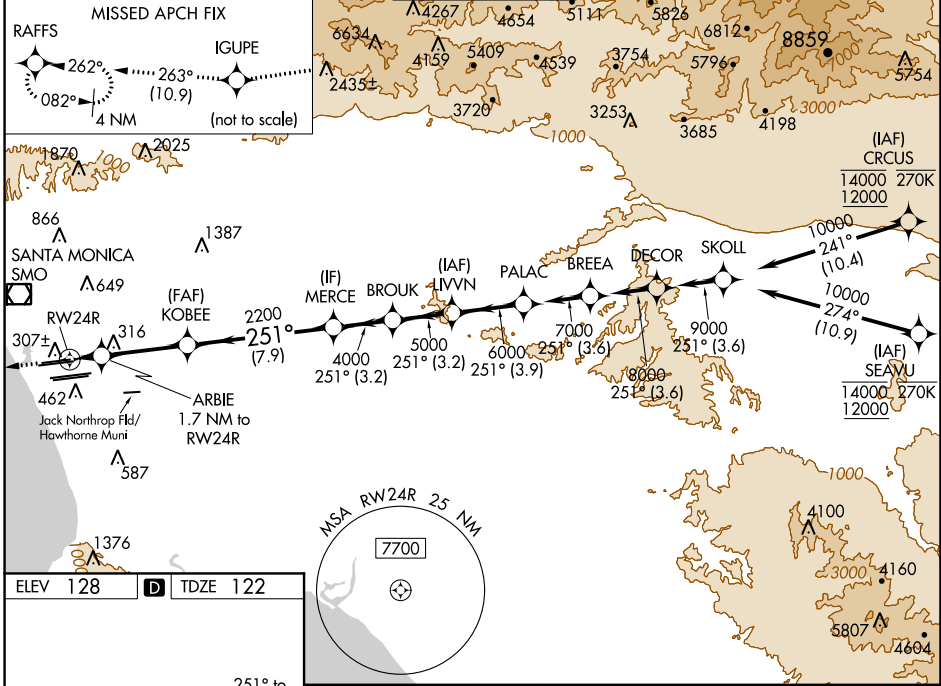
RNAV (GPS) Y RWY 24R

LOS ANGELES INTL (LAX)

WAAS CH 69307 W24A	APP CRS 251°	Rwy Idg TDZE Apt Elev	8926 122 128
--	------------------------	-----------------------------	---

RNP APCH.	<p>▼ LNAV procedure NA during simultaneous operations. Use of FD or AP required during simultaneous operations. Simultaneous approach authorized with HHR. For uncompensated Baro-VNAV systems, LNAV/VNAV NA below 6°C or above 54°C. Simultaneous approach authorized. For inop ALS, increase LNAV/VNAV all Cats visibility to 1½ SM, and LNAV Cat C/D visibility to 1⅓ SM.</p>	<p>ALSIF-2</p>	<p>MISSED APPROACH: Climb to 2000 direct IGUPE and track 263° to RAFFS and hold.</p>
-----------	--	----------------	--

D-ATIS ARR 133.8 DEP 135.65	SOCAL APP CON 124.3 363.2 <small>(APCH FM WEST)</small> 124.5 235.975 <small>(225°-044°)</small>	124.9 269.0 <small>(090°-224°)</small>	269.0 <small>(045°-089°)</small>	LOS ANGELES TOWER N 133.9 239.3 S 120.95 379.1	GND CON N 121.65 327.0 S 121.75 327.0 W 121.4 327.0	CLNC DEL 120.35 327.0	CPDLC
---	--	--	--	--	---	---	-------



ELEV 128	D	TDZE 122			
LPV DA	322/18			200 (200-½)	
LNAV/VNAV DA	589/60			467 (500-1¼)	
LNAV MDA	640/24		518 (600-½)		640/55 518 (600-1)

SW-3, 16 JUN 2022 to 14 JUL 2022

SW-3, 16 JUN 2022 to 14 JUL 2022