


# RNAV (RNP) Z RWY 7R

LOS ANGELES INTL (LAX)

APP CRS <b>071°</b>	Rwy Idg <b>11095</b> TDZE <b>128</b> Apt Elev <b>128</b>
------------------------	--

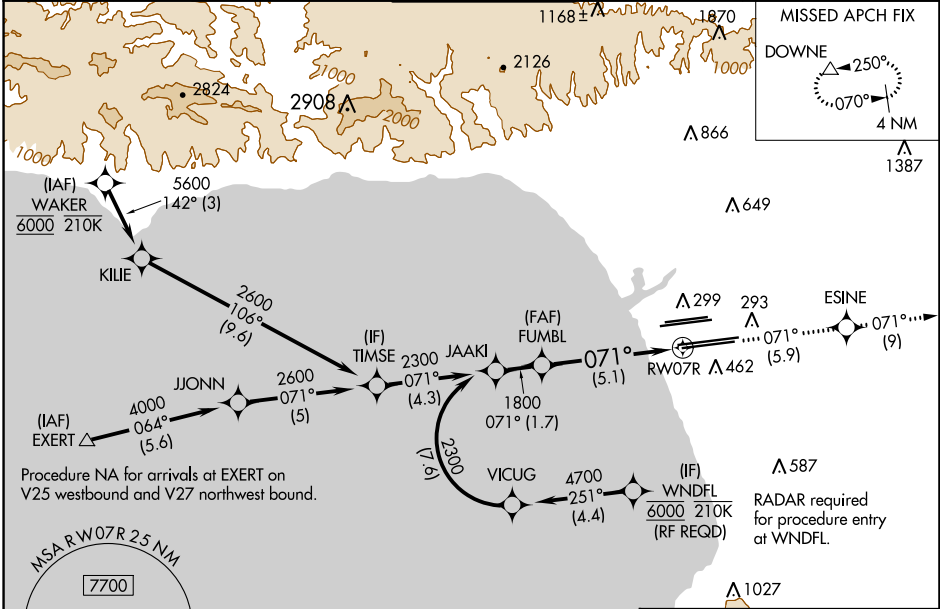
**▽** For uncompensated Baro-VNAV systems, procedure NA below 5°C (41°F) or above 54°C (130°F). For inop MALS/R, increase RNP 0.11 all Cats visibility to RVR 4500. Simultaneous approach authorized.

MALS/R



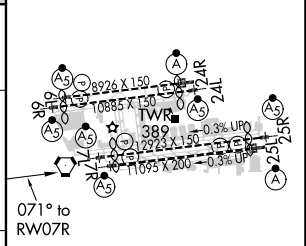
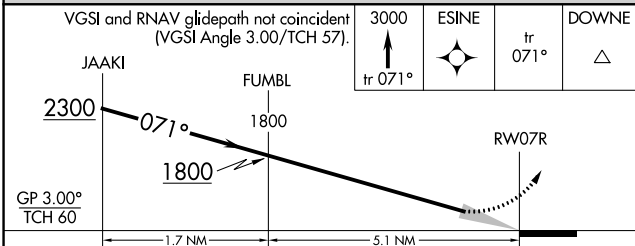
MISSED APPROACH: Climb to 3000 on track 071° to ESINE and on track 071° to DOWNE and hold.

D-ATIS ARR <b>133.8</b> DEP <b>135.65</b>	SOCAL APP CON <b>124.3 363.2</b> [APCH FM WEST] <b>124.5 235.975</b> [225°-044°]	<b>124.9 269.0</b> [090°-224°] <b>128.5 360.7</b> [045°-089°]	LOS ANGELES TOWER <b>N 133.9 239.3</b> <b>S 120.95 379.1</b>	GND CON <b>N 121.65 327.0</b> <b>S 121.75 327.0</b> <b>W 121.4 327.0</b>	CLNC DEL <b>120.35</b> <b>327.0</b>	CPDLC
---	--	--	--	---	---	-------



**GPS REQUIRED**

ELEV 128	<b>D</b> TDZE 128
----------	-------------------



CATEGORY	A	B	C	D
RNP 0.11 DA		414/24	286 (300-½)	
RNP 0.30 DA		538/45	410 (500-¾)	

TDZ/CL Rwy 6R, 7L, 24R, and 25L  
HIRL all Rwys

## AUTHORIZATION REQUIRED

SW-3, 16 JUN 2022 to 14 JUL 2022

SW-3, 16 JUN 2022 to 14 JUL 2022