


APP CRS	Rwy Idg	<b>11259</b>
<b>071°</b>	TDZE	<b>128</b>
	Apt Elev	<b>128</b>

# RNAV (RNP) Z RWY 7L

LOS ANGELES INTL (LAX)

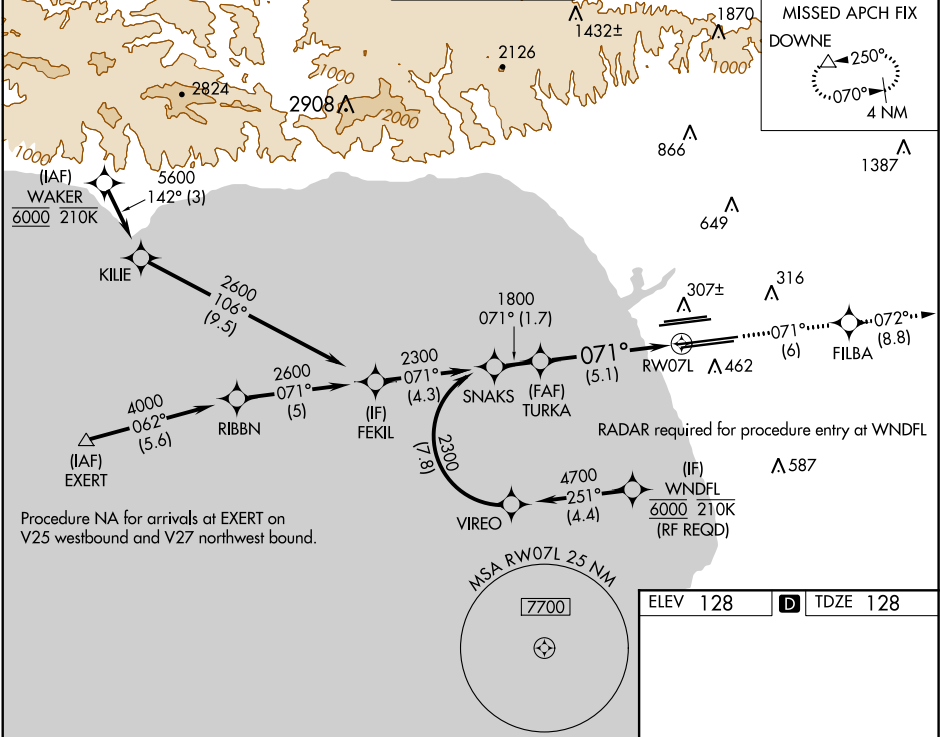
**▽** For uncompensated Baro-VNAV systems, procedure NA below 5°C (41°F) or above 54°C (130°F). GPS required. Simultaneous approach authorized. For inop ALS, increase RNP 0.11 all Cats visibility to RVR 5000 and RNP 0.30 all Cats visibility to RVR 6000.

**MALSR**



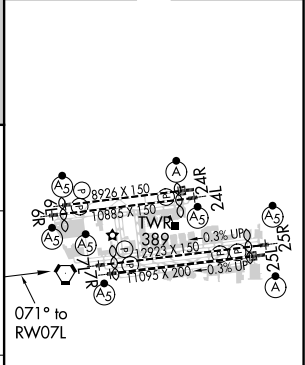
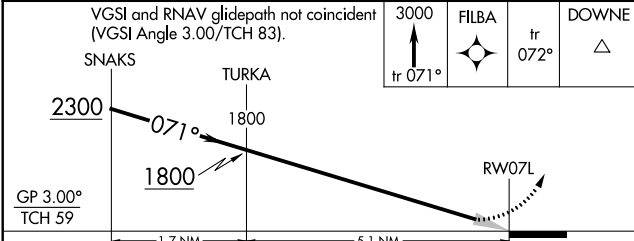
**MISSED APPROACH:** Climb to 3000 on track 071° to FILBA and on track 072° to DOWNE and hold.

D-ATIS	<b>124.3 363.2</b> <small>(APCH FM WEST)</small>	<b>124.9 269.0</b> <small>(090°-224°)</small>	<b>LOS ANGELES TOWER</b>	<b>GND CON</b>	<b>CLNC DEL</b>	CPDLC
ARR <b>133.8</b>	<b>124.5 235.975</b> <small>(225°-044°)</small>	<b>128.5 360.7</b> <small>(045°-089°)</small>	<b>N 133.9 239.3</b> <b>S 120.95 379.1</b>	<b>N 121.65 327.0</b> <b>S 121.75 327.0</b> <b>W 121.4 327.0</b>	<b>120.35</b> <b>327.0</b>	
DEP <b>135.65</b>						



Procedure NA for arrivals at EXERT on V25 westbound and V27 northwest bound.

ELEV 128	<b>D</b> TDZE 128
----------	-------------------



CATEGORY	A	B	C	D
RNP 0.11 DA		441/24	313 (400-½)	
RNP 0.30 DA		485/40	357 (400-¾)	

## AUTHORIZATION REQUIRED

TDZ/CL Rwy 6R, 7L, 24R, and 25L  
HIRL all Rwys

SW-3, 16 JUN 2022 to 14 JUL 2022

SW-3, 16 JUN 2022 to 14 JUL 2022