


APP CRS 071°	Rwy Idg 8566
	TDZE 119
	Apt Elev 128

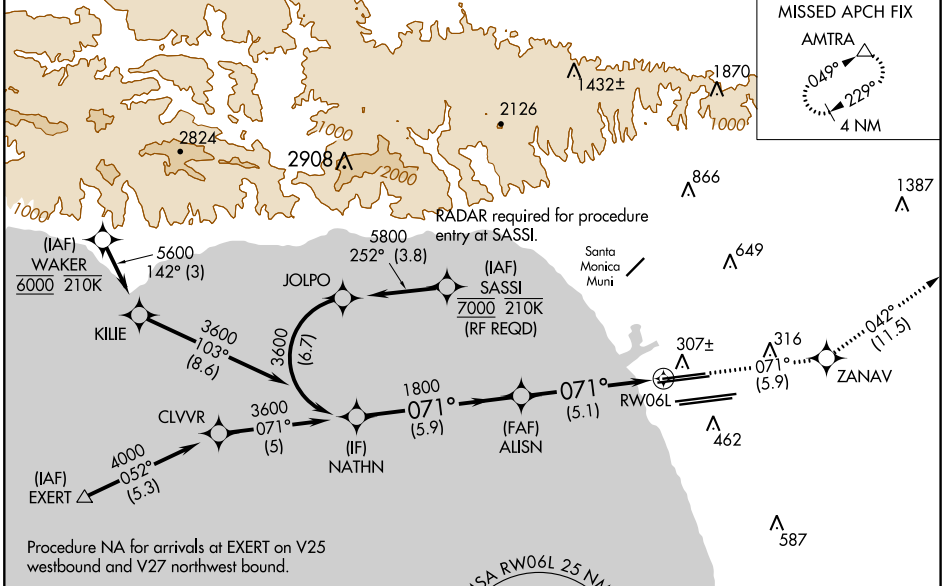
RNAV (RNP) Z RWY 6L

LOS ANGELES INTL (LAX)

▽ For uncompensated Baro-VNAV systems, procedure NA below 5°C (41°F) or above 54°C (130°F). Simultaneous approach authorized. GPS required. For inop MALSR, increase RNP 0.30 all Cats visibility to RVR 6000.

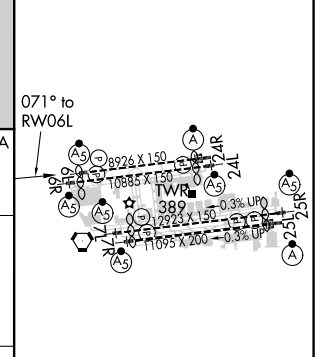
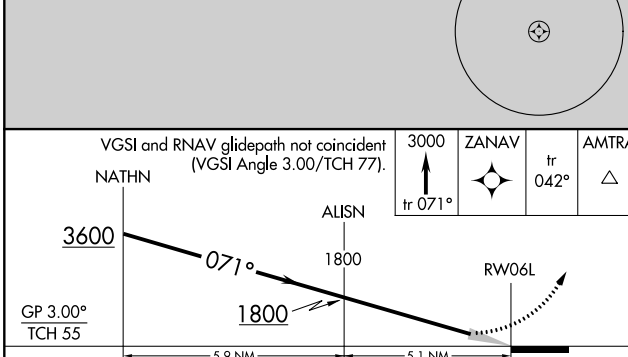
MALSR

MISSED APPROACH: Climb to 3000 on track 071° to ZANAV and on track 042° to AMTRA and hold.

D-ATIS ARR 133.8 DEF 135.65	SOCAL APP CON 124.3 363.2 (APCH FM WEST) 124.9 269.0 (090°-224°) 124.5 235.975 (225°-044°) 128.5 360.7 (045°-089°)	LOS ANGELES TOWER N 133.9 239.3 S 120.95 379.1	GND CON N 121.65 327.0 S 121.75 327.0 W 121.4 327.0	CLNC DEL 120.35 327.0	CPDLC
---	--	--	---	---	-------



Procedure NA for arrivals at EXERT on V25 westbound and V27 northwest bound.

ELEV 128	D TDZE 119
----------	-------------------



CATEGORY	A	B	C	D
RNP 0.30 DA		484/40	365 (400-¾)	

AUTHORIZATION REQUIRED

TDZ/CL Rwy's 6R, 7L, 24R, and 25L
HIRL all Rwy's

SW-3, 16 JUN 2022 to 14 JUL 2022

SW-3, 16 JUN 2022 to 14 JUL 2022