

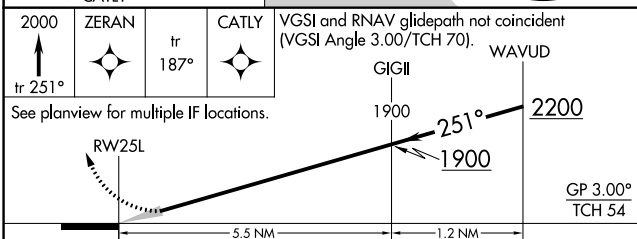
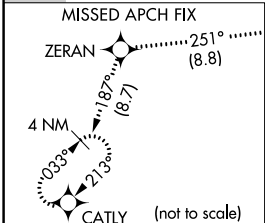
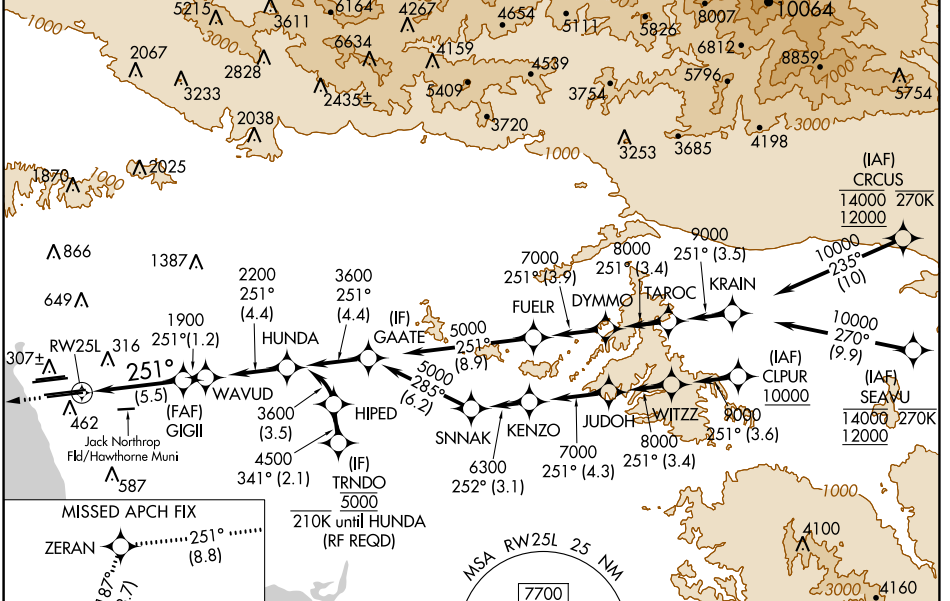
# RNAV (RNP) Z RWY 25L LOS ANGELES INTL (LAX)

APP CRS	Rwy Idg	<b>11095</b>
<b>251°</b>	TDZE	<b>104</b>
	Apf Elev	<b>128</b>

**RNP AR APCH.**  
 ▼ GPS required. For uncompensated Baro-VNAV systems, procedure NA below 5°C or above 54°C. Simultaneous approach authorized. Simultaneous approach authorized with HHR.

**ALSF-2**  
 MISSED APPROACH: Climb to 2000 on track 251° to ZERAN and on track 187° to CATLY and hold.

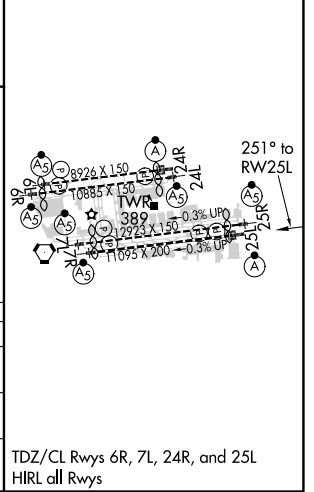
D-ATIS ARR <b>133.8</b> DEP <b>135.65</b>	SOCAL APP CON <b>124.3 363.2</b> (APCH FM WEST) <b>124.5 235.975</b> (225°-044°)	<b>LOS ANGELES TOWER</b> <b>N 133.9 239.3</b> <b>S 120.95 379.1</b>	GND CON <b>N 121.65 327.0</b> <b>S 121.75 327.0</b> <b>W 121.4 327.0</b>	CLNC DEL <b>120.35</b> <b>327.0</b>	CPDLC
---	--	---	---	---	-------



CATEGORY	A	B	C	D
RNP 0.15 DA		445/30	341 (400-5%)	
RNP 0.30 DA		543/50	439 (500-1)	

## AUTHORIZATION REQUIRED

ELEV 128	<b>D</b> TDZE 104
----------	-------------------



SW-3, 16 JUN 2022 to 14 JUL 2022

SW-3, 16 JUN 2022 to 14 JUL 2022