

RNAV (RNP) Z RWY 24L


LOS ANGELES INTL (LAX)

| | | |
|-------------|----------|-------------|
| APP CRS | Rwy Idg | 9483 |
| 251° | TDZE | 123 |
| | Apt Elev | 128 |

RNP AR APCH.

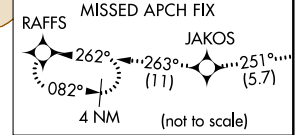
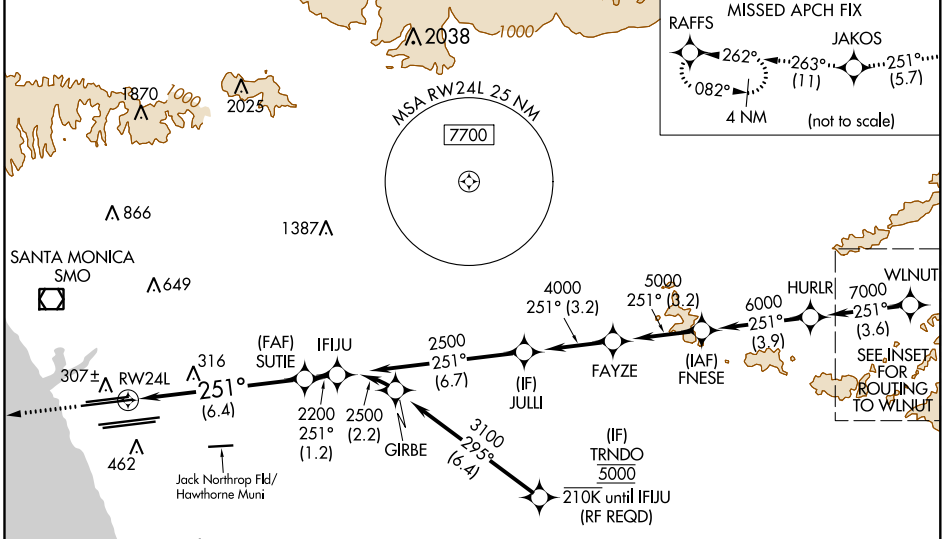
Simultaneous approach authorized. Simultaneous approach authorized with HHR.
 For uncompensated Baro-VNAV systems, procedure NA below 5°C or above 54°C. For inop ALS, increase RNP 0.15 all Cats visibility to 1 3/8 SM.

MALSR

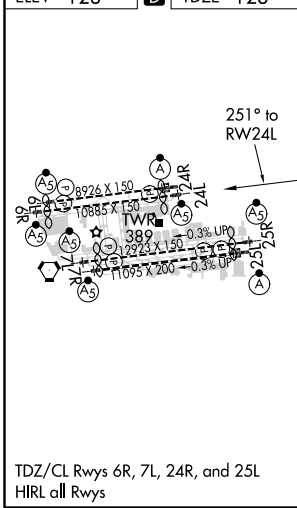
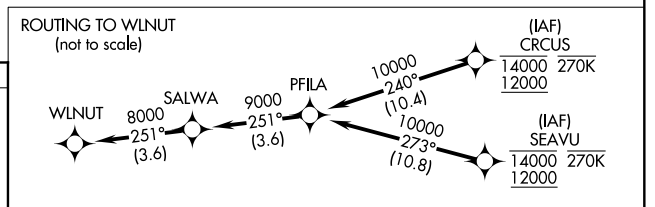


MISSED APPROACH: Climb to 2000 on track 251° to JAKOS and track 263° to RAFFS and hold.

| | | | | | |
|-------------------|--------------------------------------|-----------------------------------|--|-------------------------------|-------|
| D-ATIS | SOCAL APP CON | LOS ANGELES TOWER | GND CON | CLNC DEL | CPDLC |
| ARR 133.8 | 124.3 363.2 (APCH FM WEST) | 124.9 269.0 (090°-224°) | N 121.65 327.0 S 121.75 327.0 W 121.4 327.0 | 120.35 327.0 | |
| DEP 135.65 | 124.5 235.975 (225°-044°) | 128.5 360.7 (045°-089°) | | | |



| | | |
|-----------------|----------|-----------------|
| ELEV 128 | D | TDZE 123 |
|-----------------|----------|-----------------|



| | | | | | |
|--|-------|------------|-------|---|-------|
| 2000 | JAKOS | fr 263° | RAFFS | See planview for multiple IF locations. | IFJUU |
| tr 251° | | | | | |
| VGSi and RNAV glidepath not coincident (VGSi Angle 3.00/TCH 79). | | | | | |
| RWY 24L | | SUTIE 2200 | | IFJUU 2500 | |
| | | 2200 | | GP 3.00° TCH 59 | |
| 6.4 NM | | 1.2 NM | | | |

| | | | | |
|-------------|---|--------|--------------|---|
| CATEGORY | A | B | C | D |
| RNP 0.15 DA | | 545/35 | 422 (500-5%) | |
| RNP 0.30 DA | | 592/45 | 469 (500-7%) | |

TDZ/CL Rwy's 6R, 7L, 24R, and 25L
 HIRL all Rwy's

AUTHORIZATION REQUIRED

SW-3, 16 JUN 2022 to 14 JUL 2022

SW-3, 16 JUN 2022 to 14 JUL 2022