

LAXX ONE DEPARTURE

LOS ANGELES INTL (LAX)
LOS ANGELES, CALIFORNIA

AL-237 (FAA)

**TOP ALTITUDE:
ASSIGNED BY ATC**

TAKEOFF MINIMUMS
Rwy 6L/R, 7L/R, 24L/R, 25L/R: Standard.

NOTE: This departure is for turbojet aircraft only.
NOTE: RADAR and DME required.

D-ATIS DEP 135.65
CLNC DEL 120.35 327.0
CPDLC
GND CON (N) 121.65 327.0 (S) 121.75 327.0 (W) 121.4 327.0
LOS ANGELES TOWER (N) 133.9 239.3 (S) 120.95 379.1 (L) 124.3 363.2 (045°-224°) 125.2 263.025 (225°-044°)

SANTA MONICA 110.8 SMO Chan 45

LOS ANGELES 113.6 LAX Chan 83

SEAL BEACH 115.7 SBI Chan 104
N33°47.00-W118°03.29'

SANTA CATALINA 111.4 SXC Chan 51
N33°22.50-W118°25.19'

DANAH N33°28.86' W117°41.90'

OCEANSIDE 115.3 OCN Chan 100
N33°14.44-W117°25.06'

GOATZ N33°11.09' W118°40.25'

ROSIN N31°56.53' W120°16.11'

MALIT N32°28.54' W119°35.47'

MISSION BAY 117.8 MZB Chan 125
N32°46.93-W117°13.53'

EL TORO 117.2 ELB Chan 119
N33°37.69-W116°09.61'

TUSTI N33°46.02' W117°50.17'

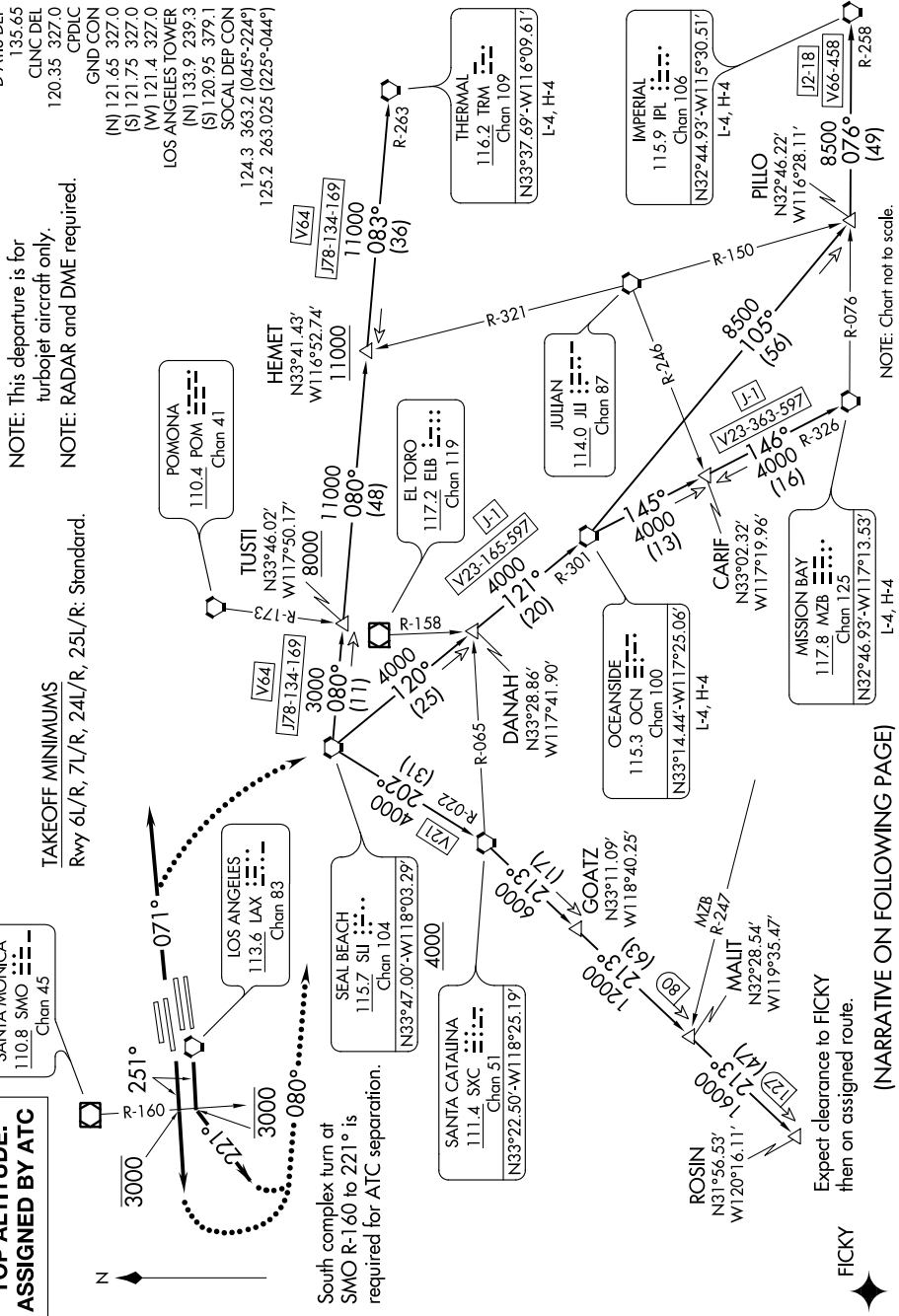
POMONA 110.4 POM Chan 41

HEMET N33°41.43' W116°52.74'

THERMAL 116.2 TRM Chan 109
N33°37.69-W116°09.61'

IMPERIAL 115.9 IPI Chan 106
N32°44.93-W115°30.51'

PILLO N32°46.22' W116°28.11'



Expect clearance to FICKY then on assigned route.

(NARRATIVE ON FOLLOWING PAGE)

NOTE: Chart not to scale.

LAXX ONE DEPARTURE

LOS ANGELES, CALIFORNIA
LOS ANGELES INTL (LAX)