

LOC/DME I-MKZ 109.9 Chan 36	APP CRS 071°	Rwy Idg 7R 11095 11259 7L 11259	TDZE 128 128	Apt Elev 128 128
--	------------------------	---	------------------------	----------------------------

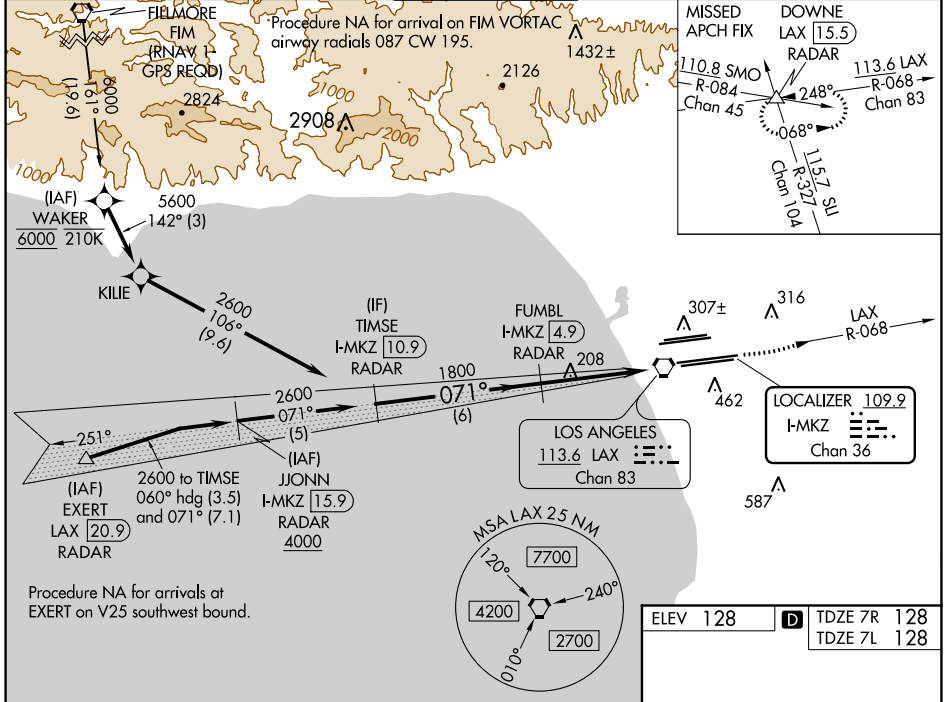
ILS or LOC RWY 7R

LOS ANGELES INTL (LAX)

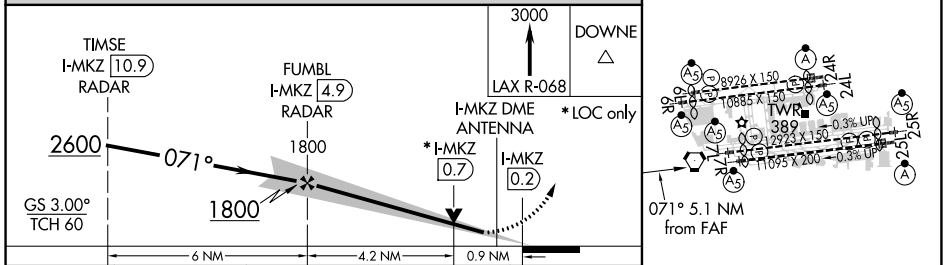
Simultaneous approach authorized. DME or RADAR required. Inop table does not apply to Sidestep Rwy 7L Cats A and B. # RVR 1800 authorized with use of FD or AP or HUD to DA.

MALS Rwy 7R	MALS Rwy 7L	MISSED APPROACH: Climb to 3000 on LAX VORTAC R-068 to DOWNNE INT/ LAX 15.5 DME/RADAR and hold.
-------------	-------------	--

D-ATIS ARR 133.8 DEP 135.65	SOCAL APP CON 124.3 363.2 (APCH FM WEST) 124.5 235.975 (225°-044°)	124.9 269.0 (090°-224°) 128.5 360.7 (045°-089°)	LOS ANGELES TOWER N 133.9 239.3 S 120.95 379.1	GND CON N 121.65 327.0 S 121.75 327.0 W 121.4 327.0	CLNC DEL 120.35 327.0	CPDLC
---	--	--	--	---	---	-------



Procedure NA for arrivals at EXERT on V25 southwest bound.



CATEGORY	A	B	C	D
S-ILS 7R#	328/24 200 (200-½)			
S-LOC 7R	460/24	332 (400-½)	460/26	332 (400-½)
SIDESTEP 7L	520/55 392 (400-1)			520-1½ 392 (400-1½)

ELEV 128	TDZE 7R 128
	TDZE 7L 128

*LOC only

071° 5.1 NM from FAF

FAF to MAP 5.1 NM

Knots	60	90	120	150	180
Min:Sec	5:06	3:24	2:33	2:02	1:42

TDZ/CL Rwys 6R, 7L, 24R, and 25L
HIRL all Rwys

SW-3, 16 JUN 2022 to 14 JUL 2022

SW-3, 16 JUN 2022 to 14 JUL 2022