

LOC/DME I-LAX 109.9 Chan 36	APP CRS 251°	Rwy Idg TDZE Apt Elev	25L 11095 104 128	25R 11134 104 128
--	------------------------	-----------------------------	---	---

ILS or LOC RWY 25L

LOS ANGELES INTL (LAX)

DME or RADAR required.
RNP APCH-GPS. From CLPUR or CRCUS or SEAVU or TRNDO.

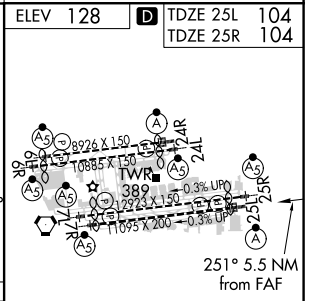
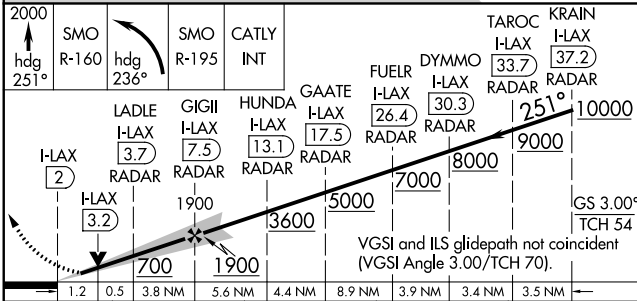
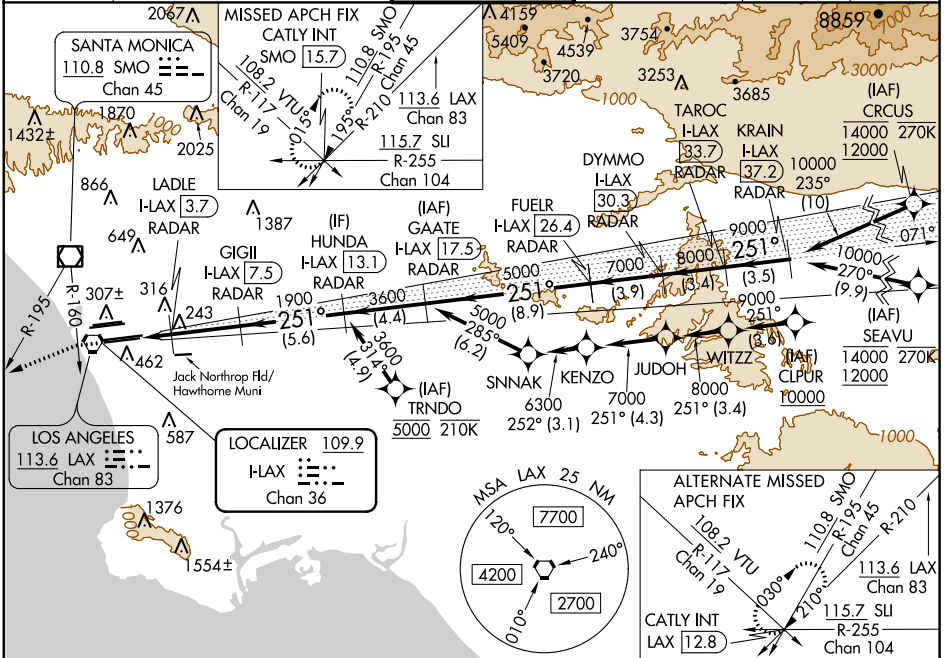
ALSF-2 Rwy 25L

MALSR Rwy 25R

MISSED APPROACH: Climb to 2000 on heading 251° until crossing the SMO R-160, then left turn on heading 236° and on the SMO R-195 to CATLY INT/SMO 15.7 DME and hold.

Simultaneous approach authorized. Simultaneous approach authorized with HHR. LOC procedure NA during simultaneous operations with HHR LOC RWY 25.

D-ATIS ARR 133.8 DEP 135.65	SOCAL APP CON 124.3 363.2 (APCH FM WEST) 124.5 235.975 (225°-044°)	124.9 269.0 (090°-224°) 128.5 360.7 (045°-089°)	LOS ANGELES TOWER N 133.9 239.3 S 120.95 379.1	GND CON N 121.65 327.0 S 121.75 327.0 W 121.4 327.0	CLNC DEL 120.35 327.0	CPDLC
---	--	--	--	---	---	-------



CATEGORY	A	B	C	D
S-ILS 25L	304/18 200 (200-½)			
S-LOC 25L	540/24	436 (500-½)	540/40	436 (500-¾)
SIDESTEP 25R	540/55 436 (500-1)		540-1½ 436 (500-1½)	
ELEV 128				
TDZE 25L 104				
TDZE 25R 104				
TDZ/CL Rwy 6R, 7L, 24R, and 25L				
HIRL all Rwys				
FAF to MAP 5.5 NM				
Knots 60 90 120 150 180				
Min:Sec 5:30 3:40 2:45 2:12 1:50				

SW-3, 16 JUN 2022 to 14 JUL 2022

SW-3, 16 JUN 2022 to 14 JUL 2022