

(GOATZ .GOATZ1) 17117

# GOATZ ONE ARRIVAL (RNAV)

AL-237 (FAA)

LOS ANGELES INTL (LAX)  
LOS ANGELES, CALIFORNIA

SOCAL APP CON  
127.4 263.025  
LOS ANGELES TOWER  
(N) 133.9 239.3  
(S) 120.95 379.1



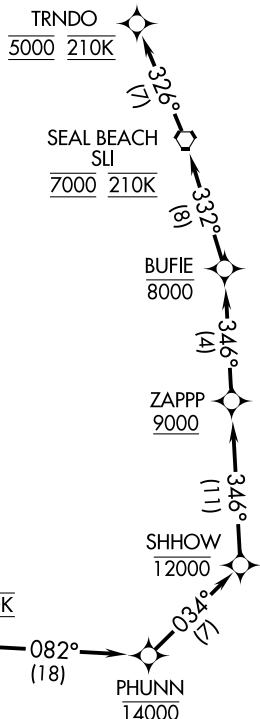
## ARRIVAL ROUTE DESCRIPTION

### FICKY TRANSITION (FICKY.GOATZ1)

From GOATZ on track 038° to cross DIRBY between 16000 and FL190 and at 280K, then on track 082° to cross PHUNN at or below 14000, then on track 034° to cross SHHOW at or below 12000, then on track 346° to cross ZAPPP at or above 9000, then on track 346° to cross BUFIE at or below 8000, then on track 332° to cross SLI VORTAC at 7000 and at 210K, then on track 326° to cross TRNDO at 5000 and at 210K. Expect ILS or RNAV (RNP) RWY 25L.

### LOST COMMUNICATIONS

In event of lost communication, proceed on the RNAV (RNP) RWY 25L approach.



- NOTE: RADAR required.
- NOTE: RNAV 1.
- NOTE: GPS required.
- NOTE: Turbojet aircraft only.
- NOTE: Expect Rwy 25L unless otherwise assigned by ATC.
- NOTE: Non RNP-AR aircraft expect RADAR vectors to final approach course upon reaching SLI VORTAC.

NOTE: Chart not to scale.

# GOATZ ONE ARRIVAL (RNAV)

(GOATZ .GOATZ1) 27APR17

LOS ANGELES, CALIFORNIA  
LOS ANGELES INTL (LAX)

SW-3, 16 JUN 2022 to 14 JUL 2022

SW-3, 16 JUN 2022 to 14 JUL 2022