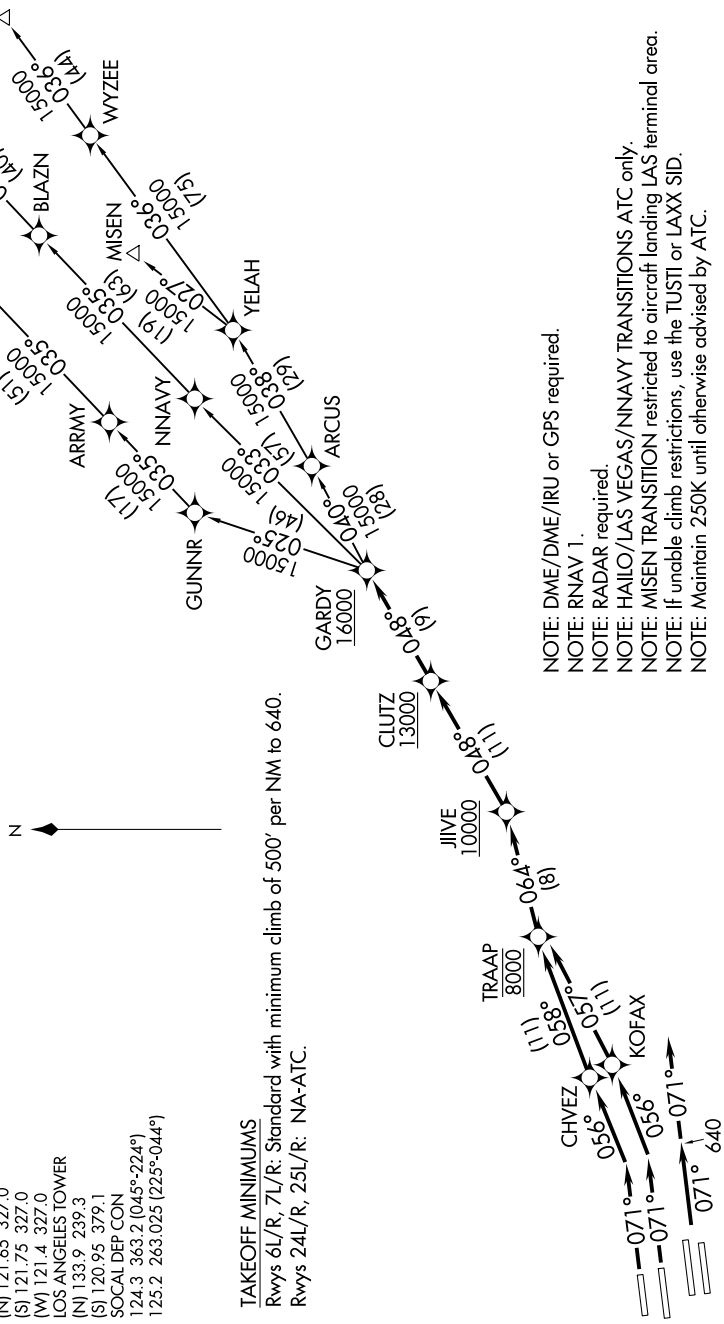


SW-3, 16 JUN 2022 to 14 JUL 2022

**TOP ALTITUDE:
ASSIGNED BY ATC**

- D-ATIS DEP 135.65
- CLNC DEL 120.35 327.0
- CPDLC
- GND CON (N) 121.65 327.0
- (S) 121.75 327.0
- (W) 121.4 327.0
- LOS ANGELES TOWER (N) 133.9 239.3
- (S) 120.95 379.1
- SOCAL DEP CON 124.3 363.2 (045°-224°)
- 125.2 263.025 (225°-044°)

TAKEOFF MINIMUMS
 Rwy 6L/R, 7L/R: Standard with minimum climb of 500' per NM to 640.
 Rwy 24L/R, 25L/R: NA-ATC.



(NARRATIVE ON FOLLOWING PAGE)

SW-3, 16 JUN 2022 to 14 JUL 2022

NOTE: Chart not to scale.