

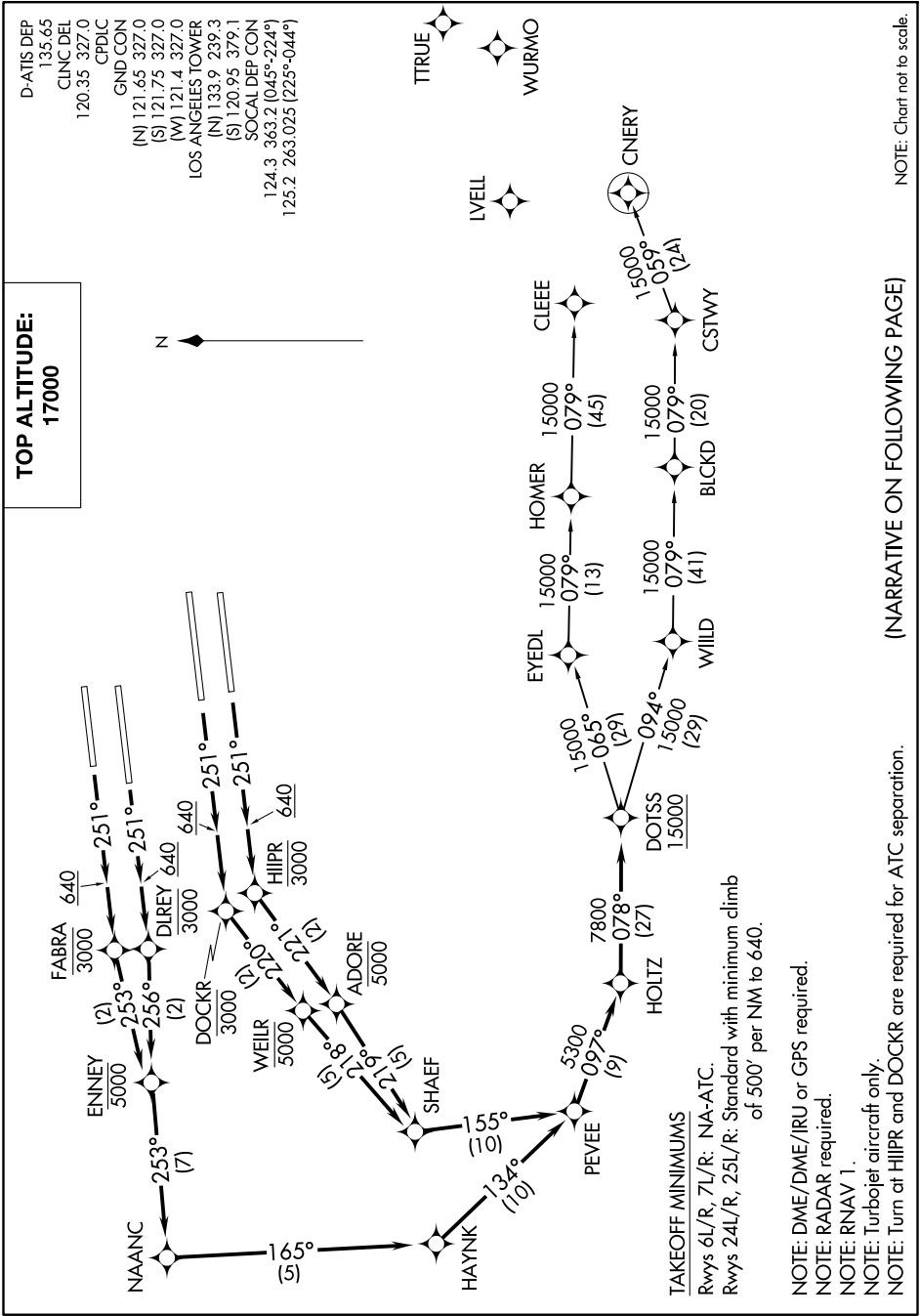
# DOTSS TWO DEPARTURE (RNAV)

AL-237 (FAA)

LOS ANGELES INTL (LAX)  
LOS ANGELES, CALIFORNIA

**TOP ALTITUDE:  
17000**

SW-3, 16 JUN 2022 to 14 JUL 2022



# DOTSS TWO DEPARTURE (RNAV)

LOS ANGELES, CALIFORNIA  
LOS ANGELES INTL (LAX)

(NARRATIVE ON FOLLOWING PAGE)

NOTE: DME/DME/IRU or GPS required.  
NOTE: RADAR required.  
NOTE: RNAV 1.  
NOTE: Turbojet aircraft only.  
NOTE: Turn at HIIPR and DOCKR are required for ATC separation.

NOTE: Chart not to scale.

SW-3, 16 JUN 2022 to 14 JUL 2022