

# DARRK THREE DEPARTURE (RNAV)

AL-237 (FAA)

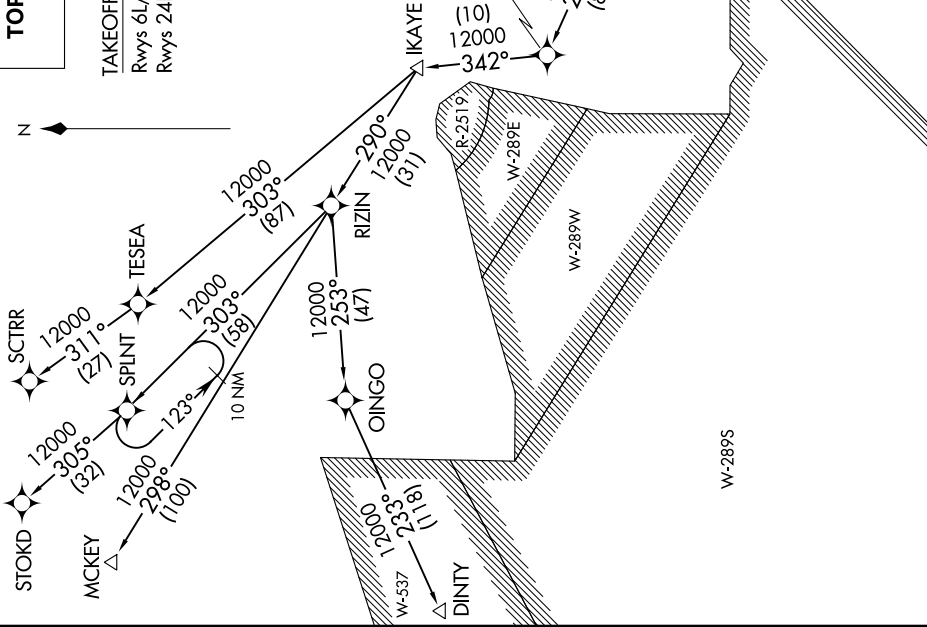
LOS ANGELES INTL (LAX)  
LOS ANGELES, CALIFORNIA

D-ATIS DEP 135.65  
 CLNC DEL 120.35 327.0  
 CPDLC  
 GND CON (N) 121.65 327.0  
 (S) 121.75 327.0  
 (W) 121.4 327.0  
 LOS ANGELES TOWER (N) 133.9 239.3  
 (S) 120.95 379.1  
 SOCIAL DEP CON (S) 124.3 363.2 (045°-224°)  
 125.2 263.025 (225°-044°)

**TOP ALTITUDE:**  
**FL230**

**TAKEOFF MINIMUMS**  
 Rwys 6L/R, 7L/R: NA - ATC.  
 Rwys 24L/R, 25L/R: Standard with minimum climb of 500' per NM to 640'.

NOTE: RNAV 1.  
 NOTE: RADAR required.  
 NOTE: STOKD, SCTRR and MCKEY transitions: DME/DME/IRU or GPS required.  
 NOTE: DINTY transitions: GPS only.  
 NOTE: Turbojet aircraft only.  
 NOTE: File the RIZIN TRANSITION in lieu of the LADYJ DEPARTURE during time periods 2100-0700 LCL. All other times RIZIN TRANSITION ATC assigned only.



(NARRATIVE ON FOLLOWING PAGE)

NOTE: Chart not to scale.

# DARRK THREE DEPARTURE (RNAV)

LOS ANGELES, CALIFORNIA  
LOS ANGELES INTL (LAX)