

WAAS CH 61314 W10A	APP CRS 096°	Rwy Idg TDZE Apt Elev	8506 861 861
--	------------------------	-----------------------------	---

RNAV (GPS) RWY 10R

CAPITAL REGION INTL (LAN)

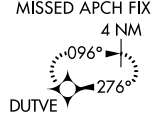
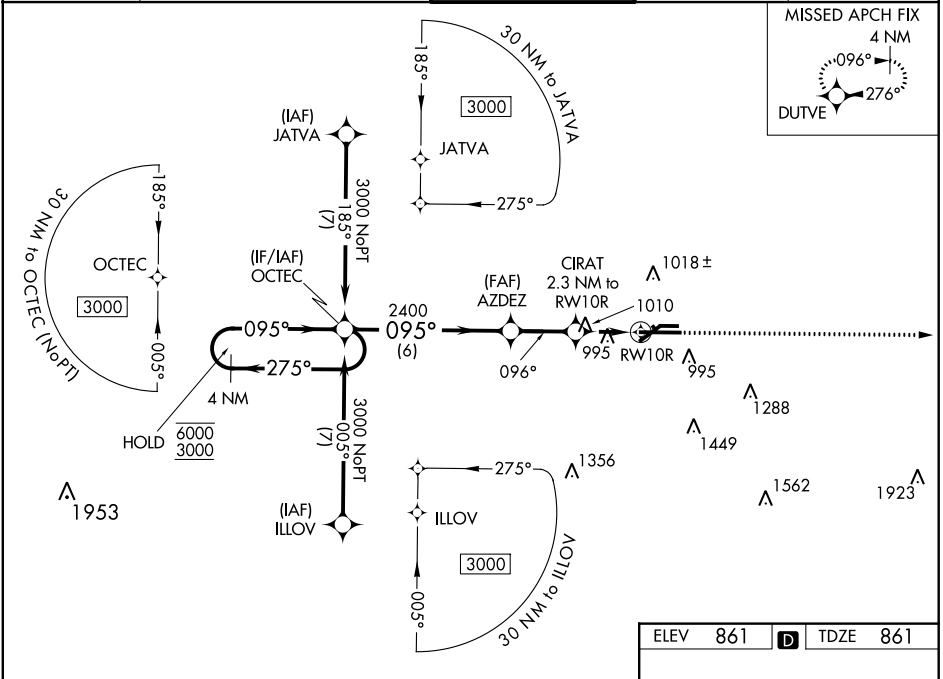
RNP APCH.

▼ Circling Rwy 10L, 28R NA at night. For uncompensated Baro-VNAV systems, LNAV/VNAV NA below -19°C or above 54°C. For inop ALS, increase LNAV/VNAV all
▲ Cats visibility to RVR 4500. ** RVR 1800 authorized with use of FD or AP or HUD to DA.



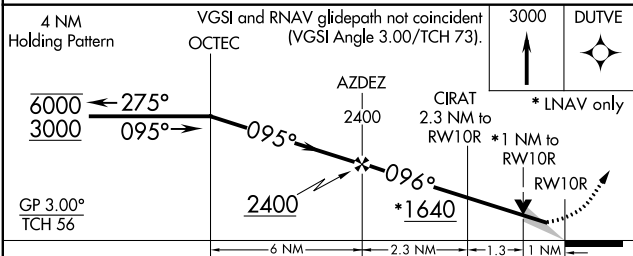
MISSED APPROACH:
Climb to 3000 direct
DUTVE and hold.

ATIS 119.75	GREAT LAKES APP CON ★ 118.65 226.4	LANSING TOWER 119.9 240.9	GND CON 121.9	CLNC DEL 123.675
-----------------------	--	-------------------------------------	-------------------------	----------------------------

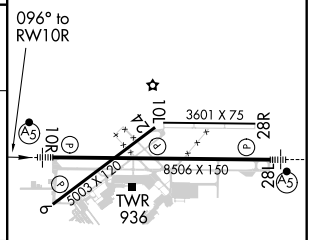


EC-1, 16 JUN 2022 to 14 JUL 2022

EC-1, 16 JUN 2022 to 14 JUL 2022



ELEV	861	D	TDZE	861
------	-----	---	------	-----



CATEGORY	A	B	C	D
LPV DA **		1061/24	200 (200-½)	
LNAV/VNAV DA		1172/24	311 (400-½)	
LNAV MDA	1260/24	399 (400-½)	1260/35	399 (400-¾)
C CIRCLING	1320-1 459 (600-1)	1380-1 519 (600-1)	1600-2 739 (800-2)	1760-3 899 (900-3)

MIRL Rwy 6-24
HIRL Rwy 10R-28L
REIL Rwy 6 and 24