

WAAS CH 97410 W05B	APP CRS 051°	Rwy Idg 8600 TDZE 959 Apt Elev 981
---------------------------------	------------------------	---

RNAV (GPS) RWY 5R

MC GHEE TYSON (T'YS)

▲ For uncompensated Baro-VNAV systems, LNAV/VNAV NA below -10° C (14° F) or above 54° C (130° F). DME/DME RNP-0.3 NA.

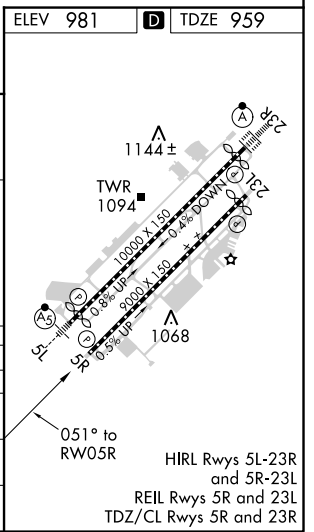
MISSED APPROACH: Climb to 1500 then climb to 4000 direct VXV VORTAC and hold, continue climb-in-hold to 4000.

ATIS 128.35	KNOXVILLE APP CON 123.9 360.8	KNOXVILLE TOWER 121.2 257.8	GND CON 121.9 348.6	CLNC DEL 121.65
-----------------------	---	---------------------------------------	-------------------------------	---------------------------



(IAF) GROSS 3100 064° (9.7)
Procedure NA for arrivals at GROSS on V115 southwest bound.

	WUPUL	VOYUR	XIZMO	RW05R
	3100	2700	1840	
	051°			
	GP 3.00° TCH 43			
	6 NM	2.7 NM	1.3 NM	1.4 NM
CATEGORY	A	B	C	D
LPV DA		1159-3/4	200 (200-3/4)	
LNAV/VNAV DA		1276-1 1/8	317 (300-1 1/8)	
LNAV MDA	1420-1	461 (500-1)	1420-1 3/8	461 (500-1 3/8)
C CIRCLING	1500-1 519 (600-1)	1620-1 639 (700-1)	1660-2 679 (700-2)	1900-3 919 (1000-3)



SE-1, 16 JUN 2022 to 14 JUL 2022

SE-1, 16 JUN 2022 to 14 JUL 2022