

WAAS CH <b>90210</b> <b>W23B</b>	APP CRS <b>231°</b>	Rwy Idg <b>8600</b> TDZE <b>965</b> Apt Elev <b>981</b>
--	------------------------	---

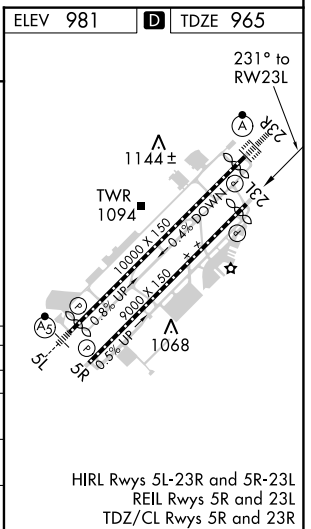
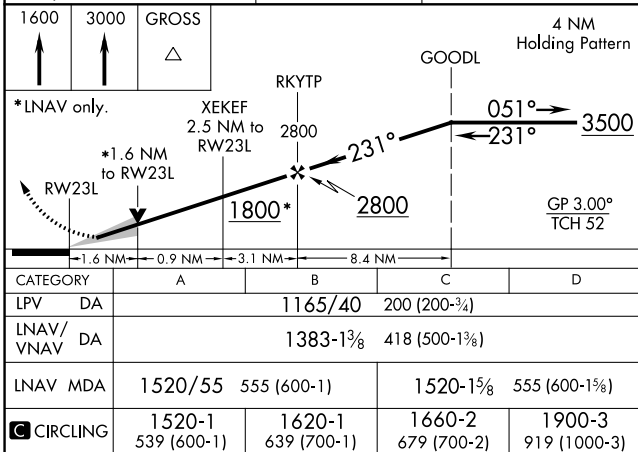
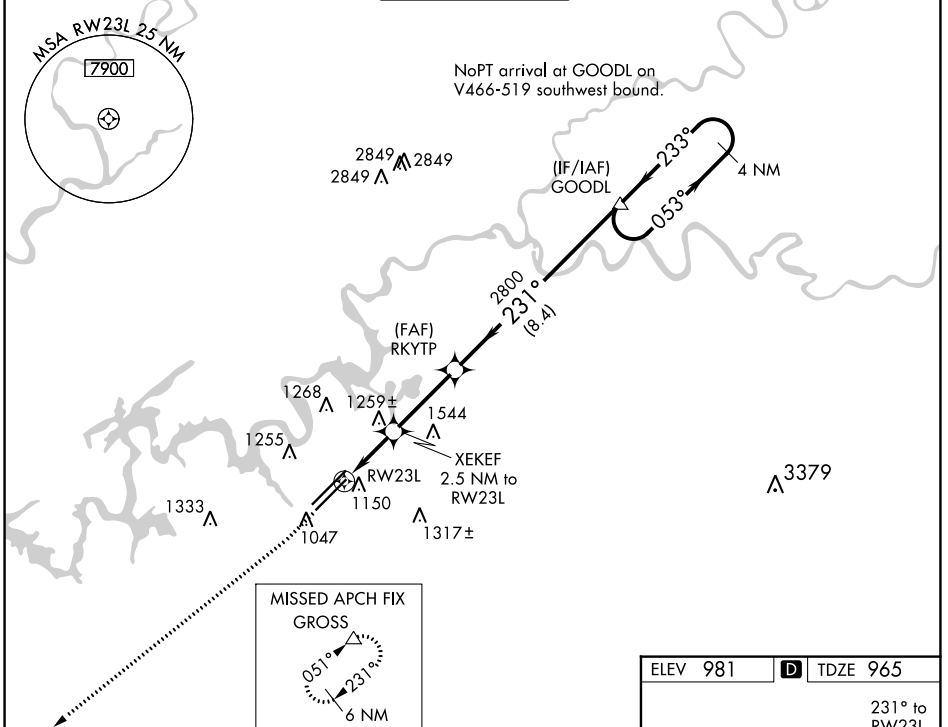
# RNAV (GPS) RWY 23L

MC GHEE TYSON (T'YS)

**ASR** For uncompensated Baro-VNAV systems, LNAV/VNAV NA below -10° C (14° F) or above 54° C (130° F). DME/DME RNP-0.3 NA.

**MISSED APPROACH:** Climb to 1600 then climb to 3000 direct GROSS and hold.

ATIS <b>128.35</b>	KNOXVILLE APP CON <b>123.9 360.8</b>	KNOXVILLE TOWER <b>121.2 257.8</b>	GND CON <b>121.9 348.6</b>	CLNC DEL <b>121.65</b>
-----------------------	---	---------------------------------------	-------------------------------	---------------------------



SE-1, 16 JUN 2022 to 14 JUL 2022

SE-1, 16 JUN 2022 to 14 JUL 2022