

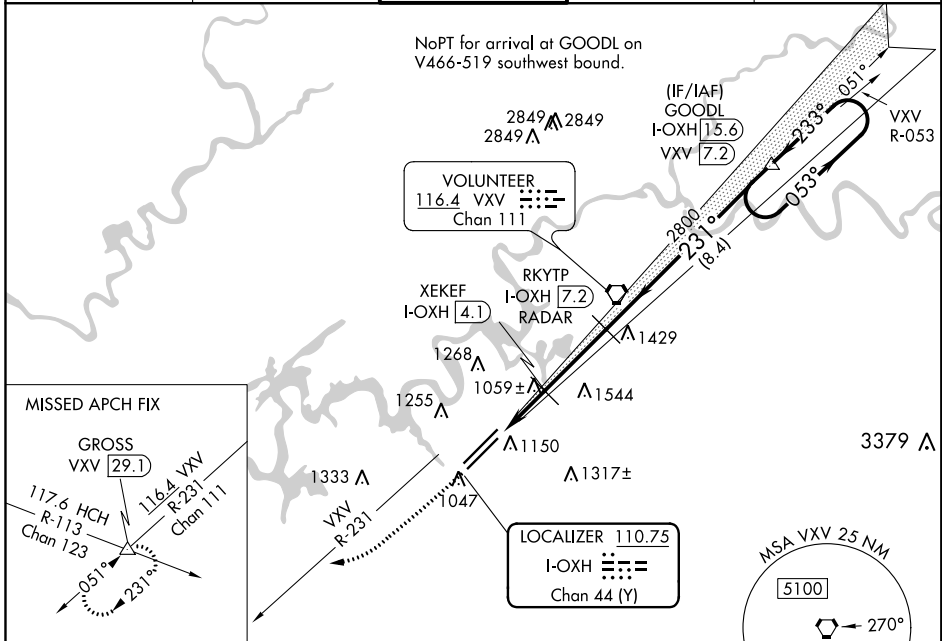
LOC/DME I-OXH 110.75 Chan 44 (Y)	APP CRS 231°	Rwy Idg 8600 TDZE 965 Apt Elev 981
--	------------------------	---

ILS or LOC RWY 23L

MC GHEE TYSON (T'YS)

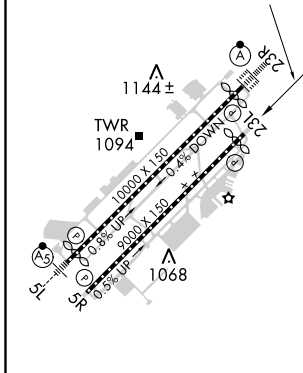
ASR	DME required.	MISSED APPROACH: Climb to 2000 then climbing right turn to 4000 on heading 240° and VXV VORTAC R-231 to GROSS INT/VXV 29.1 DME and hold.
------------	---------------	--

ATIS 128.35	KNOXVILLE APP CON 123.9 360.8	KNOXVILLE TOWER 121.2 257.8	GND CON 121.9 348.6	CLNC DEL 121.65
-----------------------	---	---------------------------------------	-------------------------------	---------------------------



ELEV 981	D	TDZE 965
----------	----------	----------

DME or RADAR REQUIRED



2000	4000	VXV R-231	GROSS Δ	Disregard all marker beacon indications.
\uparrow	hdg 240°			GOODL I-OXH 15.6 One Minute Holding Pattern
*LOC only.				
I-OXH 1.6	*I-OXH 2.6	XEKEF I-OXH 4.1	RKYTP I-OXH 7.2 RADAR	053° → 3500
				← 233° ← 2800
				GS 3.00° TCH 52
1 NM		1.5	3.1 NM	8.4 NM

CATEGORY	A	B	C	D
S-ILS 23L		1165/40	200 (200-3/4)	
S-LOC 23L		1320/55	355 (400-1)	
C CIRCLING	1500-1 519 (600-1)	1620-1 639 (700-1)	1660-2 679 (700-2)	1900-3 919 (1000-3)

HIRL Rws 5L-23R and 5R-23L
REIL Rws 5R and 23L
TDZ/CL Rws 5R and 23R

ILS or LOC RWY 23L

SE-1, 16 JUN 2022 to 14 JUL 2022

SE-1, 16 JUN 2022 to 14 JUL 2022