

# HI-ILS or LOC RWY 5L

LOC I-TYS <b>110.3</b>	APCH CRS <b>051°</b>	Rwy ldg TDZE Arprt Elev <b>9510</b> <b>953</b> <b>986</b>	AL-218 [USAF]	MC GHEE TYSON (KTYS)
---------------------------	-------------------------	--	---------------	----------------------

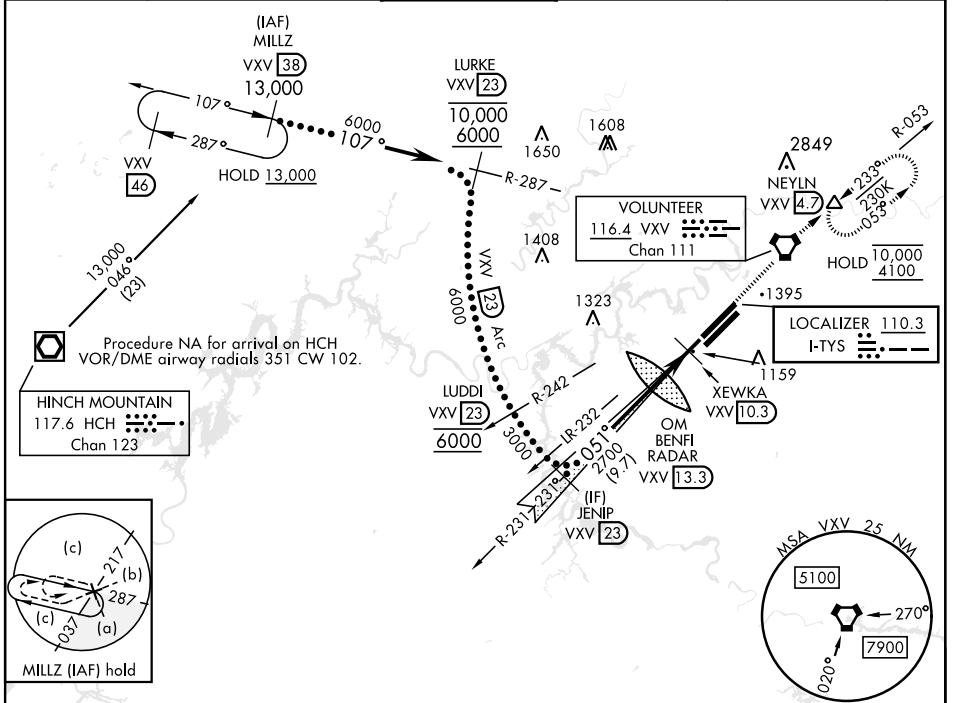
DME required.

MALSRL A5

MISSED APPROACH: Climb to 6000 direct to VXV VORTAC and on VXV R-053 to NEYLN/VXV 4.7 DME and hold, continue climb-in-hold to 6000.

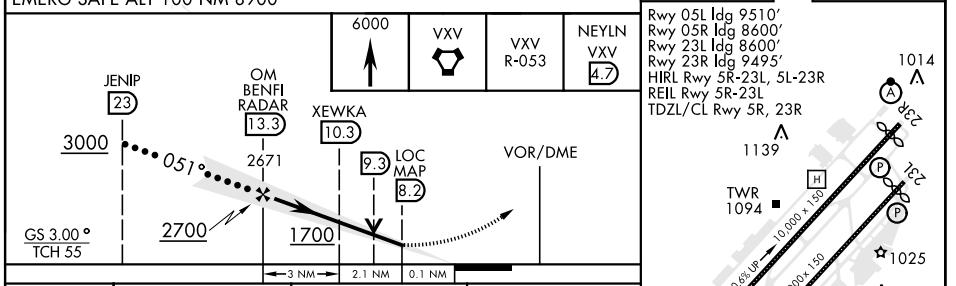
\*When ALS inop, increase CAT E vis to 3/4 mile.  
\*\*When ALS inop, increase CAT E vis to 1 1/8 miles.

ATIS <b>128.35</b>	KNOXVILLE APP CON <b>123.9 360.8</b>	KNOXVILLE TOWER <b>121.2 257.8</b>	GND CON <b>121.9 348.6</b>	CLNC DEL <b>121.65</b>	ASR
-----------------------	---	---------------------------------------	-------------------------------	---------------------------	-----



EMERG SAFE ALT 100 NM 8900

ELEV 986 TDZE 953



CATEGORY	C	D	E
S-ILS 5L *	1153-1/2	200 (200-1/2)	
S-LOC 5L **	1500-1 1/8	547 (600-1 1/8)	
CIRCLING	1660-2 674 (700-2)	1900-3	914 (1000-3)

KNOXVILLE, TENNESSEE 35°49'N-84°00'W MC GHEE TYSON (KTYS)

# HI-ILS or LOC RWY 5L



SE-1, 16 JUN 2022 to 14 JUL 2022

SE-1, 16 JUN 2022 to 14 JUL 2022