

WAAS CH <b>40327</b> <b>W21A</b>	APP CRS <b>226°</b>	Rwy Idg TDZE <b>744</b> Apt Elev <b>757</b>
--	------------------------	---

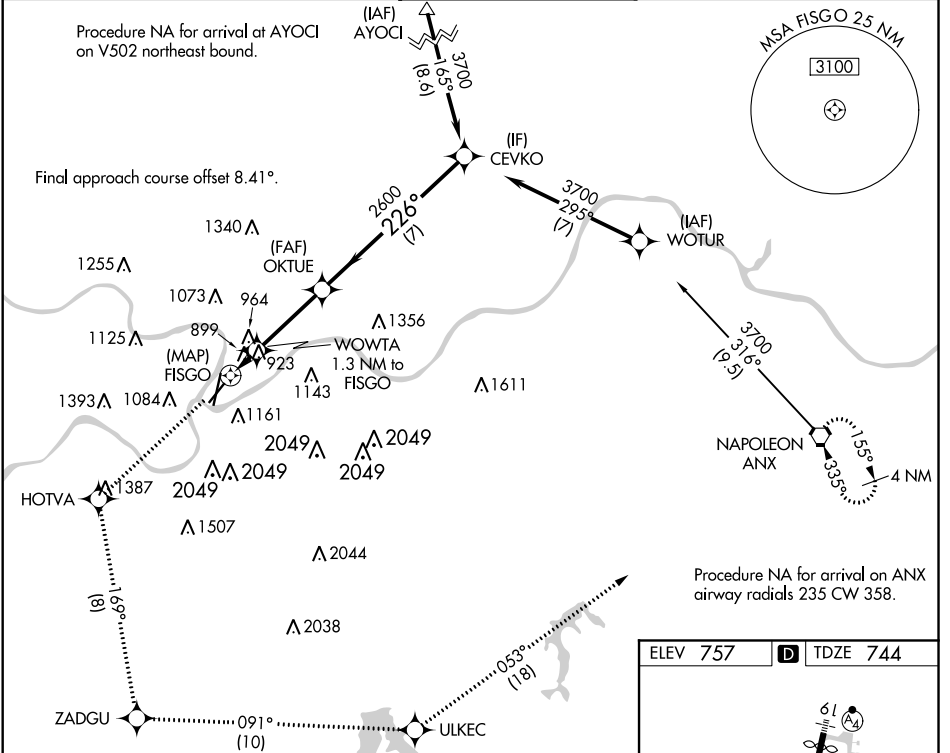
# RNAV (GPS) RWY 21

CHARLES B WHEELER DOWNTOWN (MKC)

**▼** DME/DME RNP-0.3 NA. Circling Cat D NA Rwy 3. Rwy 21 helicopter visibility reduction below 1 SM NA. Circling to Rwy 21 NA. Straight-in Rwy 21 at night, operational VGSI required, remain at or above VGSI glidepath until threshold. Circling NA east of Rwy 1/19.

**MISSED APPROACH:** Climb to 3700 direct HOTVA and on track 169° to ZADGU and on track 091° to ULKEC and on track 053° to ANX VORTAC and hold.

ATIS <b>120.75</b>	KANSAS CITY APP CON <b>118.4 307.35</b>	DOWNTOWN TOWER <b>133.3 233.7</b>	CLNC DEL <b>121.9</b>	GND CON <b>121.9</b>
-----------------------	--	--------------------------------------	--------------------------	-------------------------

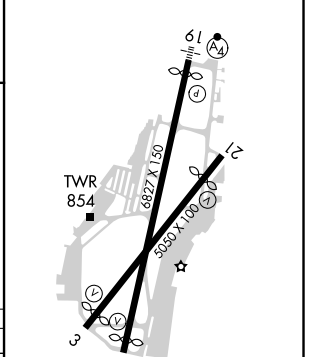


NC-3, 16 JUN 2022 to 14 JUL 2022

NC-3, 16 JUN 2022 to 14 JUL 2022

3700	HOTVA	tr 169°	ZADGU	tr 091°	ULKEC	tr 053°	ANX	CEVCO
FISGO		WOWTA 1.3 NM to FISGO		OKTUE		TCH 57		3700
1440		2600		226°		2600		3700
0.5		1.3 NM		3.2 NM		7 NM		

ELEV 757	<b>D</b> TDZE 744
----------	-------------------



CATEGORY	A	B	C	D
LP MDA	1160-1 416 (500-1)		1160-1½ 416 (500-1½)	NA
LNAV MDA	1260-1 516 (600-1)		1260-1¾ 516 (600-1¾)	NA
<b>C</b> CIRCLING	1380-1 623 (700-1)	1400-1 643 (700-1)	1460-2 703 (800-2)	1540-2½ 783 (800-2½)

REIL Rwy 1 and 21  
HIRL Rwy 3-21 and 1-19