

LOC/DME I-GQR <b>111.75</b> Chan 54(Y)	APP CRS <b>035°</b>	Rwy Idg TDZE Apt Elev <b>4270</b> <b>744</b> <b>757</b>
--	------------------------	--

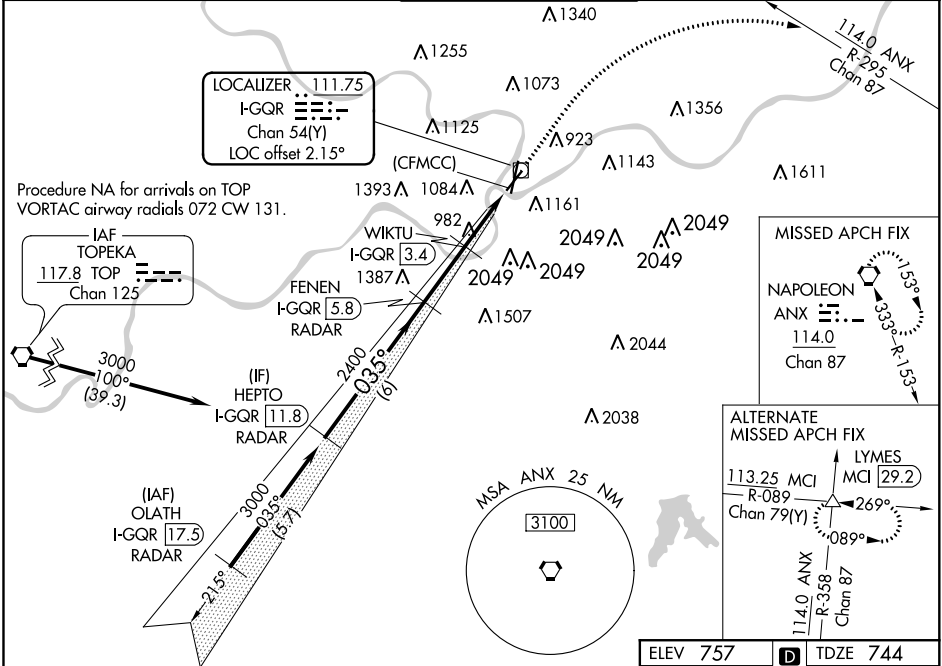
# ILS or LOC RWY 3

CHARLES B WHEELER DOWNTOWN (MKC)

DME or RADAR required for procedure entry. DME or RADAR required for LOC only.  
 ▼ Autopilot coupled approach NA below 1013. Circling NA east Rwy 1-19.  
 ▲ Circling NA to Rwy 21. Circling NA for Cat D to Rwy 3. Rwy 3 helicopter visibility reduction below RVR 4000 NA.

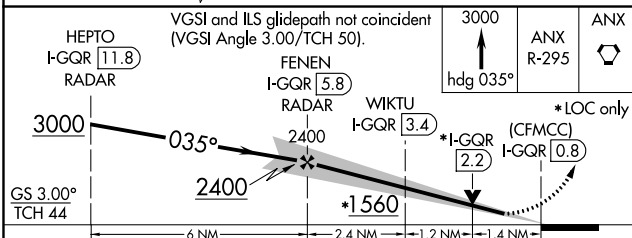
MISSED APPROACH: Climb to 3000 on heading 035° and an ANX VORTAC R-295 to ANX VORTAC and hold.

ATIS <b>120.75</b>	KANSAS CITY APP CON <b>118.4 307.35</b>	DOWNTOWN TOWER <b>133.3 233.7</b>	CLNC DEL <b>121.9</b>	GND CON <b>121.9</b>
-----------------------	--	--------------------------------------	--------------------------	-------------------------



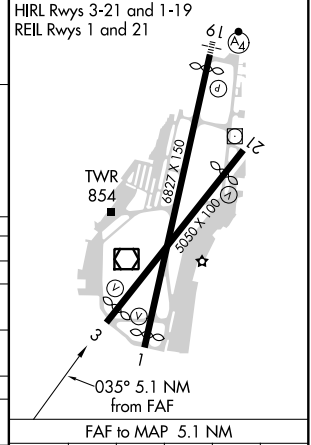
NC-3, 16 JUN 2022 to 14 JUL 2022

NC-3, 16 JUN 2022 to 14 JUL 2022



ELEV 757	TDZE 744
----------	----------

HEPTO I-GQR 11.8 RADAR	VGSI and ILS glidepath not coincident (VGSI Angle 3.00°/TCH 50).			
FENEN I-GQR 5.8 RADAR	3000 ANX R-295 ANX			
WIKTU I-GQR 3.4	hdg 035°			
*I-GQR 2.2 (CFMCC) I-GQR 0.8	*LOC only			
GS 3.00° TCH 44	6 NM	2.4 NM	1.2 NM	1.4 NM
CATEGORY	A	B	C	D
S-ILS 3	994/40 250 (300-¾)			
S-LOC 3	1560/55 816 (900-1)	1560/60 816 (900-1¼)	1560-2½ 816 (900-2½)	NA
☑ CIRCLING	1560-1 803 (900-1)	1560-1¼ 803 (900-1¼)	1560-2½	803 (900-2½)
WIKTU FIX MINIMUMS (DME REQUIRED)				
S-LOC 3	1240/55	496 (500-1)	1240-1⅜ 496 (500-1⅜)	NA
☑ CIRCLING	1380-1 623 (700-1)	1400-1 643 (700-1)	1460-2 703 (800-2)	1540-2½ 783 (800-2½)



Knots	60	90	120	150	180
Min:Sec	5:06	3:24	2:33	2:02	1:42