

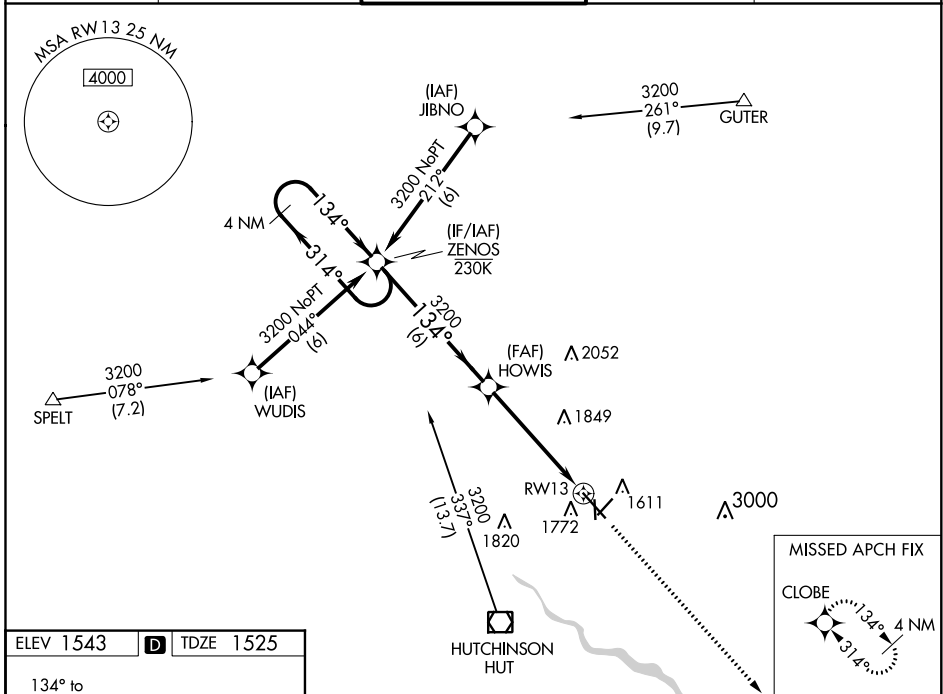
WAAS CH 50210 W13A	APP CRS 134°	Rwy Idg TDZE 1525 Apt Elev 1543	7003
--	------------------------	---	-------------

RNAV (GPS) RWY 13

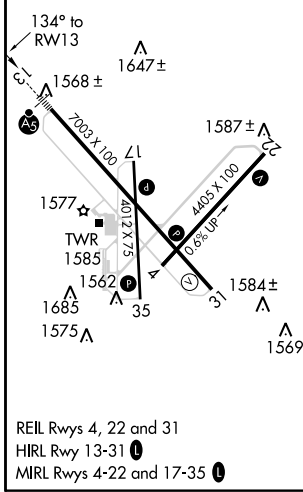
HUTCHINSON RGNL (HUT)

<p>⚠ Circling to Rwy 22 NA at night. For uncompensated Baro-VNAV systems, LNAV/VNAV NA below -18°C (0°F) or above 54°C (130°F). DME/DME RNP-0.3 NA. # RVR 1800 authorized with use of FD or HUD to DA.</p>	MALSR	MISSED APPROACH: Climb to 3600 direct CLOBE and hold.

ATIS 124.25	WICHITA APP CON 125.5 306.2	HUTCHINSON TOWER * 118.5 (CTAF) 363.0	GND CON 121.9	UNICOM 122.95
-----------------------	---------------------------------------	---	-------------------------	-------------------------



ELEV 1543	D	TDZE 1525
-----------	----------	-----------



4 NM Holding Pattern	ZENOS	HOWIS	3600	CLOBE
3200 ← 314°	→ 134°	3200	*1.7 NM to RW13	*LNAV only
GP 3.00°				
TCH 48				
	6 NM	3.4 NM	1.7 NM	
CATEGORY	A	B	C	D
LPV DA#	1725/24		200 (200-½)	
LNAV/VNAV DA	1932/40		407 (400-¾)	
LNAV MDA	2120/24 595 (600-½)		2120-1¼ 595 (600-1¼)	
C CIRCLING	2120-1 577 (600-1)		2200-1¾ 657 (700-1¾) 2720-3 1177 (1200-3)	

NC-2, 16 JUN 2022 to 14 JUL 2022

NC-2, 16 JUN 2022 to 14 JUL 2022