

LOC I-GWO 111.3	APP CRS 182°	Rwy Idg TDZE Apt Elev	6501 145 162
---------------------------	------------------------	-----------------------------	---

ILS or LOC RWY 18


GREENWOOD-LEFLORE (GWO)

When local altimeter setting not received, use Greenville altimeter setting: increase DA to 580 feet and all visibilities $\frac{1}{2}$ SM; increase all MDAs 120 feet and visibility S-LOC 18 Cat C/D $\frac{1}{4}$ SM and Circling Cat C $\frac{1}{2}$ SM and Circling Cat C/D $\frac{1}{4}$ SM and Circling Cat C $\frac{1}{2}$ SM.

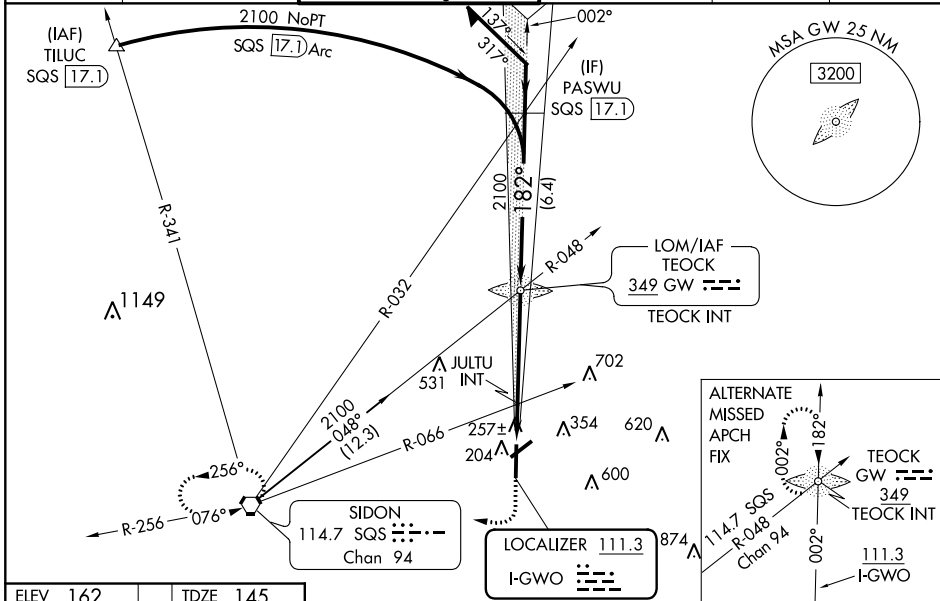
▼ For inop ALS, increase S-LOC 18 Cat A/B visibility to 1 SM, and Cat C/D to $\frac{3}{8}$ SM, and JULTU FIX

▲ minimums S-LOC 18 all Cats to 1 SM. For inop ALS when using Greenville altimeter setting, increase S-ILS 18 all Cats visibility to $\frac{1}{2}$ SM, and S-LOC 18 Cat A/B to 1 SM, and JULTU FIX minimums S-LOC 18 Cat A/B to 1 SM, and Cat C/D to $\frac{1}{8}$ SM. Circling Rwy 5, 23, 27 NA at night.

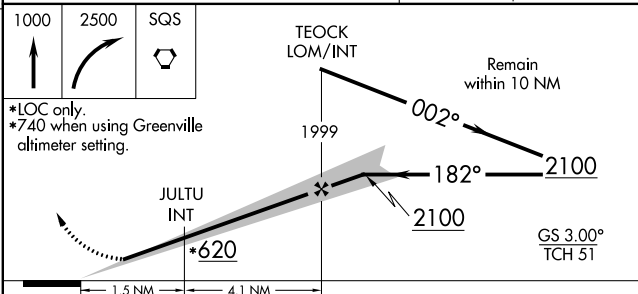
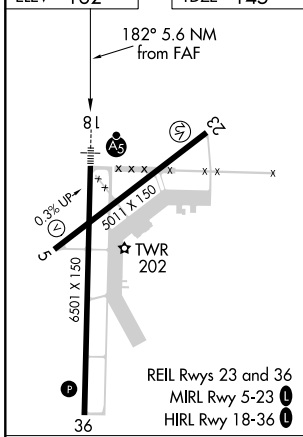
Rwy 18 helicopter visibility reduction below $\frac{3}{4}$ SM NA. Rwy 5, 23, 27 helicopter visibility reduction below 1 SM NA.

MALS R  MISSED APPROACH: Climb to 1000 then climbing right turn to 2500 direct SQS VORTAC and hold.

ASOS 119.975	MEMPHIS CENTER 132.5 259.1	GREENWOOD TOWER ★ 118.35 (CTAF) 0 367.6	GND CON 125.55 373.4	CLNC DEL 125.55	UNICOM 122.95
------------------------	--------------------------------------	---	--------------------------------	---------------------------	-------------------------



ELEV 162	TDZE 145
-----------------	-----------------



CATEGORY	A	B	C	D
S-ILS 18	471- $\frac{3}{4}$ 326 (400- $\frac{3}{4}$)			
S-LOC 18	620- $\frac{3}{4}$	475 (500- $\frac{3}{4}$)	620-1	475 (500-1)
<input checked="" type="checkbox"/> CIRCLING	760-1	598 (600-1)	1000-2 $\frac{1}{2}$ 838 (900-2 $\frac{1}{2}$)	1120-3 958 (1000-3)
JULTU FIX MINIMUMS (DUAL VOR RECEIVERS REQUIRED)				
S-LOC 18	520- $\frac{3}{4}$ 375 (400- $\frac{3}{4}$)			
<input checked="" type="checkbox"/> CIRCLING	760-1	598 (600-1)	1000-2 $\frac{1}{2}$ 838 (900-2 $\frac{1}{2}$)	1120-3 958 (1000-3)

SC-4, 16 JUN 2022 to 14 JUL 2022

SC-4, 16 JUN 2022 to 14 JUL 2022