

WAAS CH <b>87037</b> <b>W28A</b>	APP CRS <b>276°</b>	Rwy Idg <b>3463</b> TDZE <b>1013</b> Apt Elev <b>1048</b>
--	------------------------	---

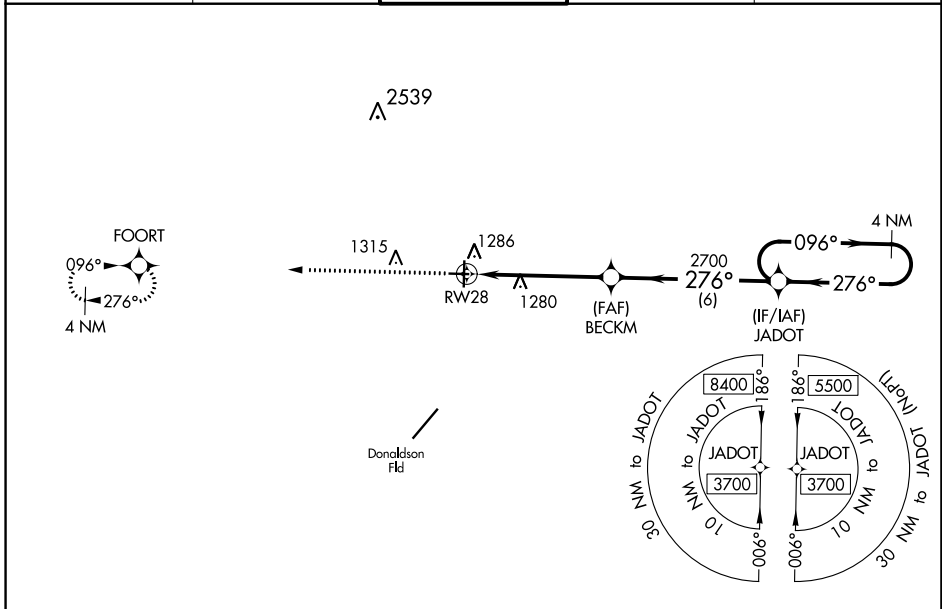
# RNAV (GPS) RWY 28

GREENVILLE DOWNTOWN (GMU)

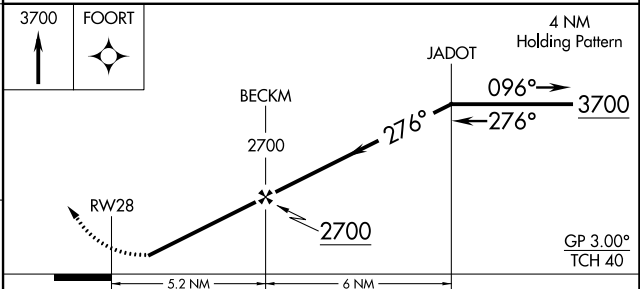
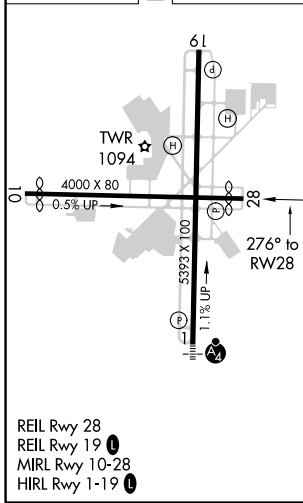
**▼** Baro-VNAV NA when using Greer altimeter setting. For uncompensated Baro-VNAV systems, LNAV/VNAV NA below -6°C (22°F) or above 54°C (130°F). DME/DME RNP-0.3 NA.  
**▲** When local altimeter setting not received, use Greer altimeter setting and increase all DA 29 feet and all MDA 40 feet; increase LNAV/VNAV all Cats and LNAV Cats C/D visibility ½ mile. Helicopter visibility reduction below 1 SM NA. Night landing: Rwy 19 NA.

**MISSED APPROACH:**  
Climb to 3700 direct FOORT and hold.

<b>ATIS ★</b> <b>127.075</b>	<b>GREER APP CON ★</b> <b>118.8 270.275</b>	<b>GREENVILLE TOWER ★</b> <b>119.9 (CTAF) 0 257.7</b>	<b>GND CON</b> <b>121.25</b>	<b>UNICOM</b> <b>122.95</b>
---------------------------------	--	--	---------------------------------	--------------------------------



ELEV 1048	<b>D</b>	TDZE 1013
-----------	----------	-----------



CATEGORY	A	B	C	D
LPV DA	1263-1 250 (300-1)			
LNAV/VNAV DA	1463-1½ 450 (500-1½)			
LNAV MDA	1540-1	527 (500-1)	1540-1½	527 (500-1½)
<b>C</b> CIRCLING	1620-1	572 (600-1)	1780-2 732 (800-2)	1860-2¾ 812 (900-2¾)

SE-2, 16 JUN 2022 to 14 JUL 2022

SE-2, 16 JUN 2022 to 14 JUL 2022