

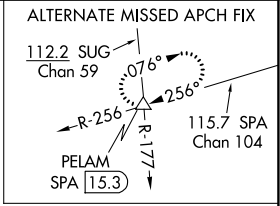
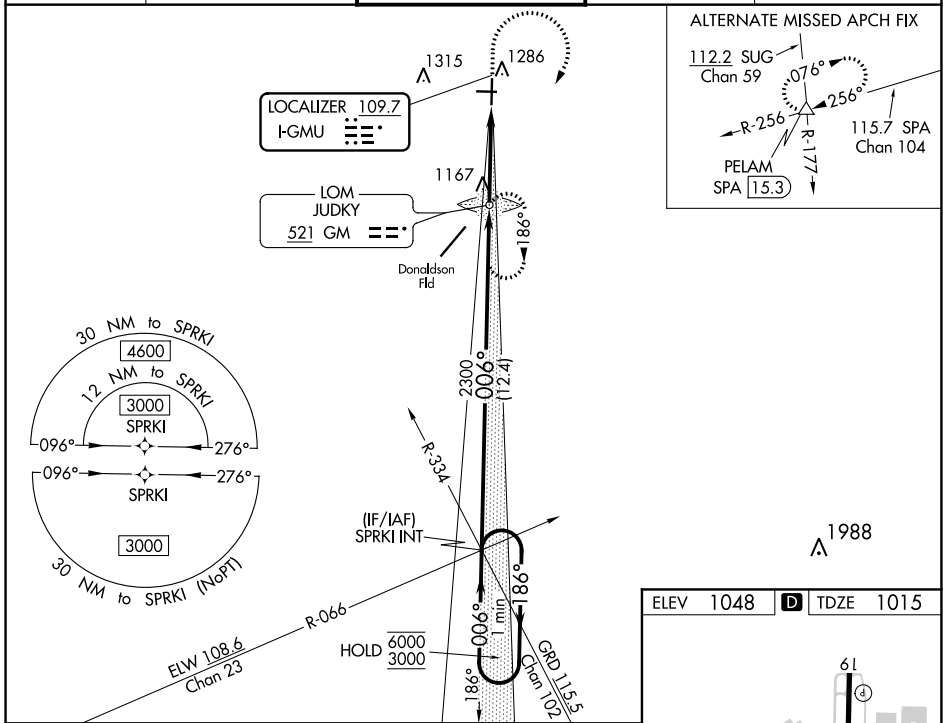
LOC I-GMU <b>109.7</b>	APP CRS <b>006°</b>	Rwy Idg <b>5393</b> TDZE <b>1015</b> Apt Elev <b>1048</b>
---------------------------	------------------------	---

# ILS Y or LOC Y RWY 1

GREENVILLE DOWNTOWN (GMU)

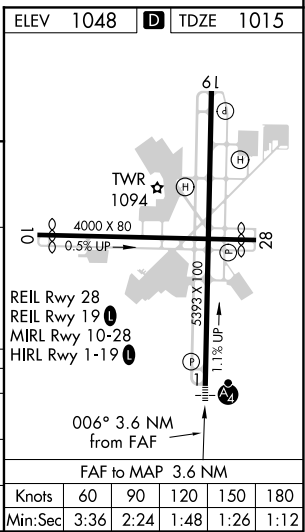
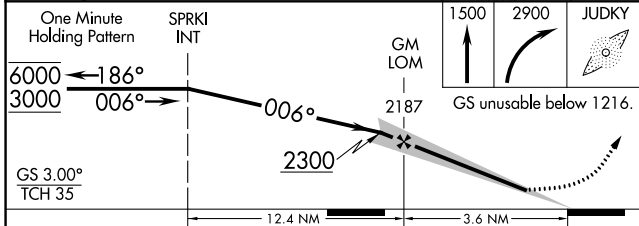
RNAV-1 GPS required for procedure entry. ADF required.	MALSF 	MISSED APPROACH: Climb to 1500 then climbing right turn to 2900 direct JUDKY LOM and hold, continue climb-in-hold to 2900.
<p><b>▼</b> When local altimeter setting not received, use Greer altimeter setting and increase S-ILS 1 DA to 1245, increase all MDAs 40 feet and visibility</p> <p><b>▲</b> S-LOC 1 Cat C and D 1/2 SM and Circling Cat C visibility 1/4 SM. Inop table does not apply to S-ILS 1.</p>		

ATIS ★ <b>127.075</b>	GREER APP CON★ <b>118.8 270.275</b>	GREENVILLE TOWER★ <b>119.9 (CTAF) 257.7</b>	GND CON <b>121.25</b>	UNICOM <b>122.95</b>
--------------------------	--	--	--------------------------	-------------------------



SE-2, 16 JUN 2022 to 14 JUL 2022

SE-2, 16 JUN 2022 to 14 JUL 2022



CATEGORY	A	B	C	D
	S-ILS 1	1216-3/4		201 (200-3/4)
S-LOC 1	1540-3/4	525 (500-3/4)	1540-1/4	525 (500-1/4)
CIRCLING	1620-1	572 (600-1)	1780-2	1860-2 3/4
			732 (800-2)	812 (900-2 3/4)

Knots	60	90	120	150	180
Min:Sec	3:36	2:24	1:48	1:26	1:12