

WAAS CH 99340 W10E	APP CRS 093°	Rwy Idg TDZE Apt Elev	7500 680 680
--	------------------------	-----------------------------	---

RNAV (GPS) Z RWY 10R

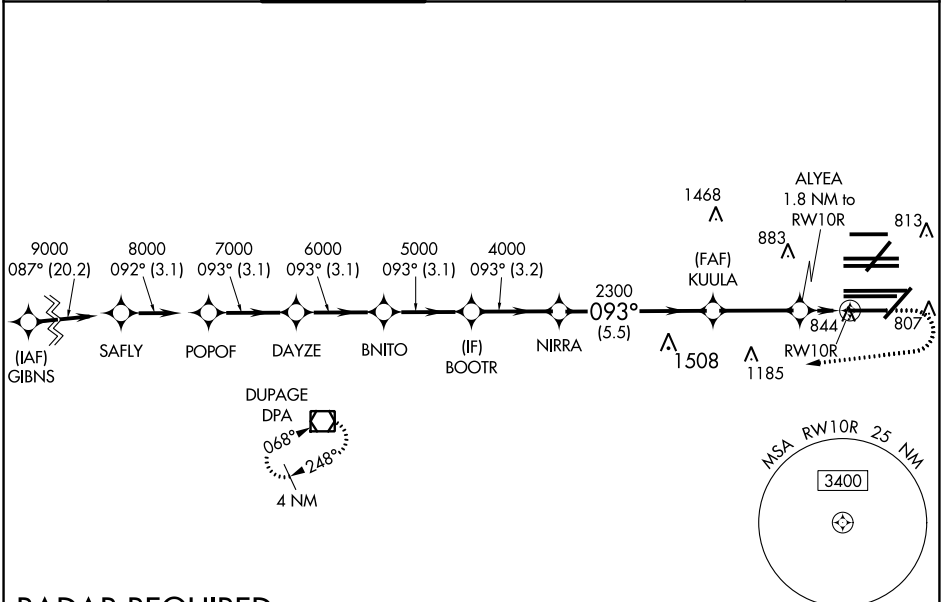
CHICAGO O'HARE INTL (ORD)

▼ For uncompensated Baro-VNAV systems, LNAV/VNAV NA below -19°C (-2°F) or above 54°C (130°F). Simultaneous approach authorized. Use of FD or AP providing RNAV track guidance required during simultaneous operations. LNAV procedure NA during simultaneous operations. DME/DME RNP-0.3 NA. For inop ALS, increase LNAV Cat C and D visibility to RVR 6000.



MISSED APPROACH: Climb to 1200 then climbing right turn to 4000 direct DPA VOR/DME and hold.

D-ATIS 135.4 282.225	CHICAGO APP CON 119.0 292.125	O'HARE TOWER 133.0 348.0	GND CON (TWR NORTH) 124.125 (TWR SOUTH) 118.05 (ALL TWRs) 226.675	(TWR CENTER) 121.75 (OBND) 121.9 (IBND)	CLNC DEL 121.6	CPDLC
--	---	------------------------------------	---	---	--------------------------	-------



EC-3, 16 JUN 2022 to 14 JUL 2022

EC-3, 16 JUN 2022 to 14 JUL 2022

RADAR REQUIRED

